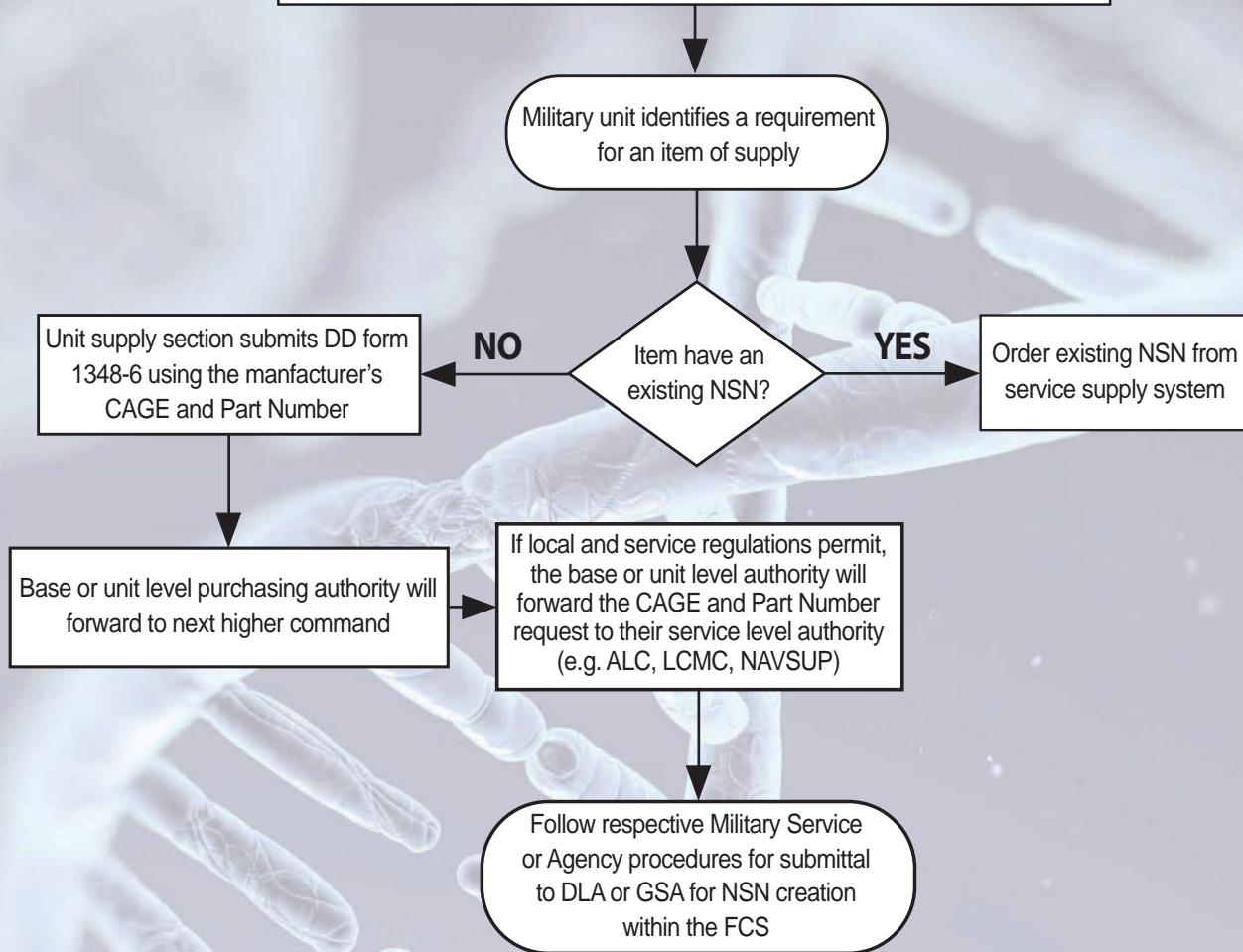




# DEFENSE LOGISTICS AGENCY

## NSN Assignment Process Flow Guide Base/Unit Level Acquisition

### NSN Request Process



NOTE: NSNS are assigned at the request of Military Services

**KEY:**

**ALC:** USAF Air Logistics Center

**FCS:** Federal Cataloging System

**LCMC:** Life Cycle Management Center

**NAVSUP:** Navy Supply Command

**NSN:** National Stock Number



# DEFENSE LOGISTICS AGENCY



## AESIP Enterprise Portal Support:

Email: [usarmy.redstone.logsa.mbx.service-desk@mail.mil](mailto:usarmy.redstone.logsa.mbx.service-desk@mail.mil)

Toll Free: 1-866-211-3367 - Commercial: 256-955-7716

CONUS DSN: 312-645-7716 - OCONUS DSN: 312-645-7716

## U.S. Army Materiel Command Logistics Data Analysis Center

<https://www.logsa.army.mil/web2/resources/documents/org2.pdf>

Propose a Technology or Equipment Item – NSN Assignment Request  
PEO Soldier - Soldier Enhancement Program

<https://www.peosoldier.army.mil/sep/>



## Marine Corps Logistics Command

<http://www.logcom.marines.mil/>

Toll Free: 1-800-952-3352

E-mail: [Catalyst\\_Support@usmc.mil](mailto:Catalyst_Support@usmc.mil)



## NAVSUP Weapon Systems Support (Philadelphia / Mechanicsburg)

<https://www.navsup.navy.mil/public/navsup/wss/>

## Global Distance Support Center (GDSC)

Toll Free: 1-877-4-1-TOUCH (1-877-418-6824), option 1, option 1.

DSN: 510-428-6824, option 1, option 1.

E-mail: [gdsc@navy.mil](mailto:gdsc@navy.mil)



## Air Force Sustainment Center (AFSC):

<http://www.afsc.af.mil/>

## AFMCMAN 23-3, Submit Base 86 in D043/D143C

### Reason Code:

1 – Request for New NSN assignment

2 – Adoption of Non-AF Used NSN

6 – Reinstate a canceled NSN

## DLA Customer Interaction Center (DLA CIC)

We're here for you 24 hours a day, 7 days a week, including Government holidays.

'One Call Resolution'

Toll Free: 1-877-DLA-CALL (1-877-352-2255)

Local Commercial: 269-704-7921

Defense Switched Network (DSN): xx-877-352-2255

Email: [dlacontactcenter@dla.mil](mailto:dlacontactcenter@dla.mil)

Visit us at:

<https://www.dla.mil/HQ/LogisticsOperations/Services/FIC/>