



DEFENSE LOGISTICS AGENCY
HEADQUARTERS
8725 JOHN J. KINGMAN ROAD
FORT BELVOIR, VIRGINIA 22060-6221

June 18, 2014

MEMORANDUM FOR SUPPLY PROCESS REVIEW COMMITTEE (PRC) MEMBERS

**SUBJECT: Approved Defense Logistics Management Standards (DLMS) Change (ADC) 1086,
Create New Materiel Receipt Acknowledgement (MRA) Source of Supply Report,
Create Requisition/Initial Supply Transaction Download File and Eliminate the
Shipment Discrepancy Report by Depot (Supply)**

The attached change to Defense Logistics Manual (DLM) 4000.25, Defense Logistics Management System, is approved for phased implementation by DLA Transaction Services by December 18, 2015. This ADC addresses DLA Transaction Services' changes to the MRA Report and does not require changes to other DOD Component systems. We will advise the Supply PRC members when DLA Transaction Services has completed the changes to MRA Reports identified in this ADC.

Addressees may direct questions to Ms. Mary Jane Johnson, DOD MILSTRAP Administrator, (703) 767-0677; DSN 427-0677 or email: Mary.Jane.Johnson@dla.mil, or Mr. Paul Jensen, DLMSO contractor support, (703) 767-6614; DSN 427-6614 or email: paul.jensen.ctr@dla.mil. Others must contact their Service or Agency designated Supply PRC representative available at <https://www2.dla.mil/j-6/dlmso/CertAccess/SvcPointsPOC/allpoc.asp>.

A handwritten signature in blue ink, appearing to read "Donald C. Pipp", is located above the typed name.

DONALD C. PIPP
Director
Defense Logistics Management
Standards Office

Attachment
As stated

cc: ODASD (SCI)

ATTACHMENT TO ADC 1086

Create New Materiel Receipt Acknowledgement (MRA) Source of Supply Report, Create Requisition Download File and Eliminate the Shipment Discrepancy Report by Depot

1. ORIGINATING SERVICE/AGENCY AND POC INFORMATION:

a. **Service/Agency:** Defense Logistics Management Standards Office (DLMSO) and DLA J3311

b. **Functional POC:**

(1) Ms. Mary Jane Johnson, DLMSO, DOD MILSTRAP Administrator; email: mary.jane.johnson@dla.mil;

(2) Mr. Paul Jensen, DLMSO contractor support, email: paul.jensen.ctr@dla.mil;

(3) DLA J331, DLA Supply Process Review Committee (PRC) representative, phone: 703-767-7297, (DSN 427-7297)

2. **FUNCTIONAL AREA:** Supply/Materiel Receipt Acknowledgment (MRA) Report (DLA Transaction Services Logistics Report-MRA Report); DLMS/MILSTRAP/DAAS

3. **REFERENCES** (manuals available at www.dla.mil/j-6/dlms/eLibrary/manuals/dlm/dlm_pubs.asp):

a. Defense Logistics Manual (DLM) 4000.25-1, Military Standard Requisitioning and Issue Procedures (MILSTRIP)

b. DLM 4000.25-2, Military Standard Transaction Reporting and Accountability Procedures (MILSTRAP), Chapter 6, MRA

c. Supply PRC Meeting 13-3, September 19, 2013, subject: MRA Report. The Meeting Minutes are available at www.dla.mil/j-6/dlms/Archives/archives_sprc.asp

d. Proposed DLMS Change ([PDC 1088](#)), May 29, 2014, Joint Supply/Logistics Metrics Analysis Reporting System (LMARS) Changes to the Materiel Receipt Acknowledgement Report

e. DLM 4000.25, Defense Logistics Management System, Volume 2, Chapter 10, MRA

f. DLM 4000.25-4, Defense Automatic Addressing System (DAAS), Appendix 5

4. APPROVED CHANGE(S):

a. **Brief Overview of Change.** (Significant changes from PDC 1086 are highlighted in yellow throughout the ADC.) This change consists of three parts:

(1) Elimination of the MRA 04, Shipment Discrepancy Report by Depot.

(2) Creation of a new MRA Report by Source of Supply to enable wholesale inventory control points (ICP) (DLA and Services) to report metrics on how well the Services acknowledge receipt of materiel the wholesale ICP shipped out of wholesale assets, for a given Component.

(3) Creation of a requisition (or other initial supply transaction) data download file capability after accessing the MRA Report Detail page for all reports.

b. **Background:**

(1) MRA enables a DOD automated, closed-loop process to provide accountability and monitor receipt of shipments of DOD and General Services Administration (GSA) wholesale stocks and DLA Disposition Services stock that are issued from on-hand assets or procured for direct vendor delivery (DVD). The MRA procedures interface with logistics response time (LRT) for measuring receipt take-up time by requisitioners and with MILSTRIP (Reference 3.a.), for providing 100 percent shipment status on stock issues, including DVDs. The MRA procedures provide for the control of due-in records below the wholesale level and the interface among the transportation, quality, supply, and financial operations/systems below the wholesale level and between the supply and purchasing operations/systems at the wholesale level to provide proper control over intransit assets and document receipt in the payment files (MILSTRAP C6.1, Reference 3.b.).

(2) At various Supply PRC meetings, the DOD Components have discussed the usefulness of the MRA Reports¹ and have provided input on areas for improvement or elimination of unnecessary reports. As discussed at Supply PRC Meeting 13-3 (Reference 3.c.), MRA has emerged as a tool to support audit readiness by serving as evidential matter for audit readiness within DOD Logistics. As part of the audit readiness effort, DLA identified MRAs as one of the "big rocks" that needs to be addressed in order to be audit ready. DLA uses MRAs to prove to auditors that the ICP appropriately paid vendors and billed customers for direct vendor delivery (DVD) contracts. Toward that end, MRA reports can be used to identify areas where MRA submissions may be lacking and corrective action should be focused. MRAs provide supporting evidence for the Order to Cash (O2C) and Procure to Pay (P2P) audit business cycles. Improvements to the MRA Reports are identified to help DLA and the Services more easily identify areas where increased management attention is required.

¹ MRA Reports are available via the DLA Transaction Services, Logistics Reports WebTool. User access is requested from the DLA Transaction Services Website <https://www.transactionservices.dla.mil>.

c. Describe Requested Change in Detail

(1) Change 1 – Eliminate MRA04 Shipment Discrepancy Report by Depot.

(a) During a July 11, 2013, DLMSO discussion of the MRA Report with DLA Supply PRC representative/J331, elimination of MRA04 – Shipment Discrepancy Report by (DLA Distribution) Depot was recommended.

(b) **Justification.** The discrepancy indicator used for this report provides no detailed discrepancy information; it just notes that a discrepancy report (supply discrepancy report (SDR), product quality deficiency report (PQDR), or transportation discrepancy report (TDR)) will be submitted. Further, the indicator is only present when it is known at the time of receipt that a discrepancy report will be submitted. Some discrepancies such as PQDRs often surface after receipt. Additionally, subsequent to the receipt and MRA submission, a suspected discrepancy, such as a shortage, may later be discovered to be invalid (e.g., shortage received) and the SDR is never actually submitted or the submitted SDR is cancelled. As such, the MRA04 – Shipment Discrepancy Report by Depot provides limited value. The actual SDR discrepancy information resides in the DOD WebSDR application and is accessible by using the ad hoc query capability in WebSDR. Access to WebSDR requires a DLA Transaction Services, WebSDR System Access Request (SAR). The discrepancy indicator in the DLMS 527R, Materiel Receipt Acknowledgement (MILSTRAP legacy Document Identifier Code (DIC) DRA) can be viewed in the WebVLIPs application.

(2) Change 2 – MRA Report by Source of Supply (Wholesale ICP)

(a) In the absence of an ad hoc reporting capability for MRA Reports, the Supply PRC identified a requirement for a report by wholesale Source of Supply during the Supply PRC Meeting 09-01 as a future report enhancement and was briefly noted in ADC 482.² Further, in 2013, the DLA Supply PRC representative/J331 requested this MRA Report capability.

(b) The MRA Report by Source of Supply will be from the perspective of the wholesale ICP routing identifier codes (RICs) that directed the shipment, and will address all Services and DLA. The MRA Report by Source of Supply will be of value to wholesale ICPs (Source of Supply) to report metrics on how well the Services acknowledge receipt of materiel the ICP directed shipment out of wholesale assets, for a given Service/Agency. The MRA Report by Source of Supply will assist the Supply PRC representatives (or their designee) responsible for analyzing the report, with identification of the biggest offenders that are not submitting required MRAs. The MRA Report by Source of Supply will have separate Stock and DVD Reports and a combined Stock and DVD Report. The DVD breakout is required because DLA tracks requisitions fulfilled by DVD and has a requirement to receive the MRA before initiating billing and payment.

² DLA Transaction Services response, during Supply PRC Meeting 2009-01, to a question on their ability to create ad hoc MRA reports: . . . Due to the manner in which data is retrieved and their technical architecture constraints, development of any ad hoc capabilities was not currently feasible. The MRA Report is generated based on specific requirements that are consistent. The web application presents data that was processed via a back-end batch application, and that application's processing requirements are unchanging. The batch application's output data gets formatted, and presented via the front end web application (MRA Reports). The web page is used for presentation only. The MRA Reports are a static set of reports, not an on demand report. Ad hoc reports would require a new web site and it would have to be approved by the WEB Council.

(c) On the Summary Report page, the report will be arrayed by Source of Supply (Service or Agency wholesale ICP) and receiving Component. On the Detail Report page, the breakout will be arrayed by the Source of Supply and Receiving Component. For DLA, the correct RICs to be used are SMS and S9D/S9W (S9D – DLA Disposition Services; S9W – DLA Disposition Services, RCP).³ For the Services, the RICs used will be selected from the established wholesale ICP RIC list maintained by DLA Transaction Services for LMARS and the MRA Reports, (see Table D at www.dla.mil/j-6/dlms0/eLibrary/Documents/PMPRC/KeyLMARSTables.docx).

(d) During DLMSO/DLA Supply PRC Representative discussions, we noted that RIC S9D does not appear on the LMARS wholesale ICP RIC list. Since DOD MILSTRAP and DLMS MRA procedures state that for the purpose of MRA procedures, DLA Disposition Services is the DOD ICP for shipments from disposition service, we recommend that S9D be added to the LMARS list of wholesale ICP RICs. This is being addressed in the joint Supply/LMARS Changes to MRA Report Criteria and MRA Report Business Rules PDC 1088 (Reference 3.d.).

(e) Enclosure 1 contains the requirement details and format for the MRA Report by Source of Supply.

(3) Change 3 – Add capability to download a list of requisition/initial supply transaction data after accessing the MRA Report Detail page

(a) **Existing Capability.** The example in Figure 1 shows the first 40 of 119 document numbers in an MRA Query for a particular DoDAAC. In the current state, the document numbers are a hyperlink to WebVLIPS, and each document number has to be accessed individually to review the key data.

Figure 1. MRA Query Requisition Number List

The screenshot shows a web interface for an MRA Query. At the top, it says "MRA Query for MRA01 33 SB3200" and "Page 1 of 3". Below this, there are "Forward" and "Bottom" navigation buttons. In the center, a box indicates "Total Found: 119". The main content is a grid of 40 document numbers, each preceded by a number from 1 to 40. Each document number is a blue hyperlink. At the bottom of the grid, it says "UNCLASSIFIED - FOUO".

1	SB320023072004	11	SB330022990003	21	SB330023050008	31	SB330023110003
2	SB320023072005	12	SB330022990005	22	SB330023050009	32	SB330023110005
3	SB320023072006	13	SB330023030009	23	SB330023050010	33	SB330023110006
4	SB32002334001E	14	SB330023030010	24	SB330023050011	34	SB330023110007
5	SB32002334002E	15	SB330023030014	25	SB330023060003	35	SB330023110009
6	SB32002334003E	16	SB330023030017	26	SB330023060004	36	SB330023120006
7	SB330022280009	17	SB330023030019	27	SB330023060005	37	SB330023120007
8	SB330022560011F	18	SB330023030020	28	SB330023062005A	38	SB330023120008
9	SB330022860024	19	SB330023040009B	29	SB330023070003	39	SB330023120009
10	SB330022970008	20	SB330023040011	30	SB330023070004	40	SB330023120011

³ DLA Supply PRC representative (DLA J331) email from February 7, 2014 requested the S9W transactions be included with the totals for S9D.

(b) Revised Capability Required:

1. Enhance the MRA Report by providing an option to download an Excel file with requisition/initial supply transaction⁴ data after accessing the MRA Report Detail page and selecting a specific ship-to DoDAAC. This requirement applies to all MRA Reports.

2. The existing MRA DoDAAC Summary report displays blocks of 40 document numbers linked to WebVLIPS. While that is useful, the capability to download the entire list of document numbers with associated requisition/initial supply transaction data to an Excel file will be immensely useful for research purposes. The capability for users to download this data for analysis will simplify efforts to isolate MRA issues and help improve MRA statistics.

3. DLA Supply PRC Representative noted the preference is to show the MRA Not Received transaction data as there is a high level of interest to manage by exception.

4. Note: The download reports capability is similar to the existing WebVLIPS capability to download search results to an Excel file.

5. Data requirements for the downloadable file are:⁵

- Header with Date Run and Source of Supply RIC
- Shipment Date
- Document Number
- Suffix

- Supplementary Address*
 - (Ship-To DoDAAC – DLMS)
 - Signal Code*
 - (Bill-To DoDAAC – DLMS)
- *Staffing Note: This enhancement perpetuates legacy “MILS” data requirements due to the DLA Transaction Services Micro Automated Routing System (DMARS). The DMARS performs transaction level services, such as, validation, editing, routing, imaging, and exception processing, using the 80 record position legacy format.

- Priority
- NSN
- Shipped Quantity
- Unit of Issue
- Unit Price (U/P)

⁴ The term “requisition/initial supply transaction” is used because in addition to the requisition, some referral and passing orders, materiel release orders, and a variety of Component unique transactions are used to determine the MRA Report eligibility. The specific transactions are identified in the MRA Decision Tree and MRA Business Rule in PDC 1088 (Reference 3.d.)

⁵ The headers use legacy data elements due to DLA Transaction Services Micro Automated Routing System (DMARS) requirements.

- Total Cost
- Initial Transaction DLMS/MILS, (e.g., requisition or initial supply transaction if no requisition is available per MRA Business Rules/Decision Tree)⁶
- Communication Routing Identifier (COMMRI) of the system from which the requisition, **or initial supply transaction,** originated
- COMMRI associated with the Document Number DoDAAC (could be a requisitioner/requiring/other activity)⁷
- COMMRI where the Follow-up for Delinquent MRA transaction was transmitted

6. DLA Transaction Services will build the capability for the downloadable file of requisition/initial supply transaction data to execute similar to how the “Save to Excel File” is executed in WebVLIPS. When downloading the requisition/initial supply transaction data file, users will have the option to either open or save⁸ the Excel file when a DoDAAC is selected on the specific MRA Report Page.

7. When the Excel file opens, the headers identified above and in Figure 2 will display. The file will be sorted by Shipment Date, Document Number and Suffix with set filters/sorts. Figure 2 shows the Excel File Layout for the download file.

8. The Army requested the three Data Pattern Communication Routing Identifiers (COMMRI) identified above to help isolate MRA issues associated with the originator, and the automated information systems associated with the transaction and MRA. This capability will apply to all MRA Reports.

Figure 2. Excel File Layout

Date Run: Month Day, Year																
ICP RIC: XXX																
Shipment Date	Document Number	Suffix	SUPPAD	Ship To DoDAAC	Signal Code	Bill To DoDAAC	Priority	NSN	Shipped Quantity	Unit of Issue	Unit Price	Total Cost	Initial Transaction DLMS/MILS	COMMRI Requisition System	COMMRI DOCNO DoDAAC	COMMRI Follow-up
▼	▼	▼	▼	▼	▼	▼	▼	▼	▼	▼	▼	▼	▼	▼	▼	▼

Data Pattern Communication Routing Identifier

COMMRI – System Originating the requisition (A0, AT, AM)

COMMRI – For the DoDAAC in the Document Number

COMMRI – Where the Follow-up Delinquent MRA transaction was transmitted

⁶ This is the transaction that results in the inclusion in the MRA Report per the MRA Business Rules/Decision Tree.

⁷ This accommodates the reality that there is not always a “requisition” transaction.

⁸ Security settings to save and open files vary by workstation setting and may require users save the file and open it from the saved location.

9. Army request to identify COMMRI in the Requisition/Initial Supply Transaction Data File. During the Supply PRC meeting (13-3), the Army requested the three COMMRI identified above and in Table 1 be added to the requisition/initial supply transaction data file. The three COMMRI will help the Army (and others) to see the originator of the transaction, the system from which the initial transaction originated and which system received the follow-up for delinquent MRA. The DLA Transaction Services feedback on the COMMRI data request noted there is space available to identify the three COMMRI. Specific requirement statements and DLA Transaction Services feedback is provided below.

Table 1. Communication Routing Identifier (COMMRI) Types

COMMRI Type	Details
Document Number DoDAAC in the requisition or initial supply transaction	During LMARS/MRA processing, add the COMMRI for the DoDAAC shown in the first six positions of the document number of the requisition or initial supply transaction. ⁹ This COMMRI will be available once the download is implemented for every transaction that has a valid DoDAAC in the document number.
System from which the requisition originated	This identifies the COMMRI for the system from which the requisition originated (e.g., Army LMP).
Where the Follow-up for Delinquent MRA transaction was transmitted	This will be the COMMRI for the Follow-Up For Delinquent MRA sent by DLA Transaction Services. This transaction is identified by the DLMS 527R by the beginning segment (BR02/020 Code TG). This transaction provides the functionality of MILSTRAP legacy DIC DRF.

a. COMMRI Requirement Statements. The following requirement statements for DLA Transaction Services apply to the COMMRI for the system that originated the requisition, and the COMMRI to which the Follow-up for Delinquent MRA transaction was transmitted.

- These two COMMRI are not currently stored and DLA Transaction Services will store the COMMRI at the time of transaction processing.
- This will be implemented in a multi-step process and will take an estimated six to nine months, once started.
- Add the required new columns to the Logistics On-line Tracking System (LOTS) database and modify LOTS processing to capture the desired COMMRI.
- Modify LMARS tables/processing and develop the MRA Reports programming to produce the download.
- Tracking these two COMMRI will not be retroactive. The COMMRI will not be available for transactions stored on LOTS or LMARS/MRA before the complete change is implemented. This is because MRA Reports deal with already processed records, and the

⁹ The range of these transactions that constitute a requisition or initial supply transaction as identified in the MRA Business rules decision tree and associated narrative (See PDC 1088, Reference 3.d.).

requisition/initial supply transaction download data file will contain blank COMMRI for one or both of these two COMMRI, for many months after processing is implemented.

b. Requirement statements based on DLA Transaction Services and Army Feedback on COMMRI.

- The requisition or initial supply transaction types subject to MRA are identified in the Decision Tree and Business Rules Narrative (PDC 1088). A copy of the MRA Business Rules Decision Tree is included at Enclosure 2.
- Provide the COMMRI for the system from which the requisition originated. If none of the requisition types are received by DLA Transaction Services, the COMMRI will be null. For this requirement, the requisition types are identified as:
 - The Requisition transaction is identified by the DLMS 511R by beginning segment (1/BR02/020 Code A0). This transaction provides the functionality of MILSTRIP legacy Document Identifier Codes (DIC) A01, A02, A04, A05, A07, A0A, A0B, A0D, and A0E.
 - The Requisition Follow-up transaction (process as requisition if original requisition not received) is identified by the DLMS 869F by the beginning segment (1/BSI08/020 Code IN). This transaction provides the functionality of MILSTRIP legacy DIC AT1, AT2, AT4, AT5, AT7, ATA, ATB, ATD and ATE.
 - The Requisition Modification transaction (process as requisition if original document not received) is identified by the DLMS 511M by beginning segment (1/BR02/020 Code AM). This transaction provides the functionality of MILSTRIP legacy DIC AM1, AM2, AM4, AM5, AMA, AMB, AMD, and AME.
- If multiple requisition or initial supply transaction types are received, provide the COMMRI for the last requisition transaction received.
- For DIC CHA/CH1, Army BE9, et al., These will be treated as the initial supply transaction per the business rules identified in PDC 1088, if the transaction fits the criteria for a shipment qualifying for an MRA. The COMMRI for the system that originated the transaction will be null. **NOTE:** The MRA Decision Tree at Enclosure 2 identifies the initial supply transactions, to include the Service specific initial supply transactions, as they are being staffed by PDC 1088.
- If a DRA is received before the DRF and the DRA is a non-receipt, the receiving COMMRI of the DRF will be shown in the download.
- If there is no shipment status from a wholesale ICP, there is no MRA tracking.
- If no DRF is received, the transaction will not be in the MRA Report.

d. Revisions to DLM 4000.25 Manuals:

(1) Revise DLM 4000.25-2, MILSTRAP, Chapter 6 (shown). Changes are identified by **red bold italics** and ~~double~~ strike-through. DLMSO will make corresponding changes to DLM 4000.25, Defense Logistics Management System, Volume 2, Chapter 10 (Reference 3.e).

C6.10.2.2.2. ~~Capability to do~~ for Additional MRA Report

Analysis

C6.10.2.2.2.1. Most of the MRA reports contain a “Save” link above the report title. Clicking the “Save” link will launch the applicable MRA report content in a spreadsheet format for additional analysis.

C6.10.2.2.2.2. *The MRA reports contain an option from the MRA Report Detail page (after selecting a DoDAAC) to download the entire list of document numbers with associated requisition/initial supply transaction data to an Excel file for additional research. The following data elements are included in the downloadable file:*

- *Header with Date Run and Source of Supply RIC*
- *Shipment Date*
- *Document Number*
- *Suffix*
- *Supplementary Address*¹⁰
- *Ship-To DoDAAC*
- *Signal Code*¹¹
- *Bill-To DoDAAC*
- *Priority*
- *NSN*
- *Shipped Quantity*
- *Unit of Issue*
- *Unit Price (U/P)*
- *Total Cost*
- *Initial Transaction DLMS/MILS, (e.g., requisition or initial supply transaction if no requisition is available per MRA Business Rules/Decision Tree)*¹²
- *Communication Routing Identifier (COMMRI) of the system from which the requisition or initial supply transaction originated*
- *COMMRI associated with the Document Number DoDAAC, (e.g., could be a requisitioner/requiring/other activity)*
- *COMMRI where the Follow-up for Delinquent MRA transaction was transmitted*

(Intervening text not shown)

~~C6.10.2.2.3.5. Shipment Discrepancy Report by Depot shows the number of shipments by qualified depot or DVD shipper and the count and percentage of~~

¹⁰ *This enhancement perpetuates legacy “MILS” data requirements due to the DLA Transaction Services Micro Automated Routing System (DMARS) which performs transaction level services, such as, validation, editing, routing, imaging, and exception processing, using the 80 record position legacy format.*

¹¹ *Ibid.*

¹² *This is the transaction that results in the inclusion in the MRA Report per the MRA Business Rules/Decision Tree (PDC 1088 , Reference 3.d.).*

~~MRA's received from reporting activities with an MRA discrepancy indicator code from the qualifying depots or DVD shippers.~~ ***MRA Report by Source of Supply (Wholesale ICP) shows MRAs from the perspective of the wholesale ICP to review how well the Services acknowledge receipt of the materiel the ICP shipped out of wholesale assets for a given Service/Agency. Detail report is available.***

(2) Enclosure 3 shows the DLM 4000.25-4, DAAS, Appendix 5 (Reference 3.f.) additions for *Source of Supply MRA Report Descriptions*.

b. **Alternatives:** None identified.

5. **REASON FOR CHANGE:** Improve MRA Report capabilities and support audit readiness.

6. **ADVANTAGES AND DISADVANTAGES:**

a. **Advantages:** These changes will improve the ability of DLA and the Services to use the MRA Reports tool to monitor the effectiveness of the MRA process and help to identify organizations or systems where MRA reporting issues need to be addressed.

b. **Disadvantages:** None

7. **ASSUMPTIONS USED OR WILL BE USED IN THE CHANGE OR NEW DEVELOPMENT:** The MRA Report enhancements are being developed for use by all Components and no specific Component unique requirements were identified.

8. **ESTIMATED TIME LINE/IMPLEMENTATION TARGET:** DLA transaction Services will provide phased implementation for this ADC. Target dates for each phase:

a. Change 1 - Eliminate the Shipment Discrepancy Report by Depot (MRA04): target implementation 3 months from date of ADC (approximately September 18, 2014) .

b. Change 2 - Create New MRA report by SOS (Wholesale ICP): target implementation 12 months from date of ADC (approximately June 18, 2015).

c. Change 3 - Create Requisition/Initial Supply Transaction Download File: target implementation 18 months from data of ADC (approximately December 18, 2015). This change requires LOTS changes to get the COMMRI's, which increases the time.

9. **ESTIMATED SAVINGS/COST AVOIDANCE ASSOCIATED WITH IMPLEMENTATION OF THIS CHANGE:** None identified

10. **IMPACT:**

a. **New DLMS Data Elements:** None

b. **Changes to DLMS Data Elements:** None

c. **Automated Information Systems (AIS):** No impact anticipated for Component AISs.

d. DLA Transaction Services:

(1) Requires modification of MRA Reports display. These changes do not affect the MRA Report program logic to determine what transactions are counted for MRA Reports.

(2) The DAAS manual is affected by this change.

e. Non DLM 4000.25 series Publications: None

11. PDC 1086 STAFFING RESPONSE/COMMENT RESOLUTION

Component	Responses/Comments to PDC 1086	Disposition
Army	<p>Concurs with comment: The national community concurs with the following comments:</p> <p>"Minor comment regarding ENCL 1, Figure 3, p 6. Not sure if this is just for illustrative purposes; however, BR4 is not a SOS RIC for the Army and there are other Army SOS RICs missing (AP5/AJ2/etc). Also, not sure what is meant by 'not shown' for some of the Army RICs listed."</p>	<p>1. In PDC 1086, ENCL 1, Figure 3, p6 was for illustrative purposes, the Receiving Component breakout was only shown for the first two wholesale ICP RICs. The example was updated to reflect AP5 and B69, which were not shown in the original example.</p> <p>2. Army noted that BR4 is not an SoS RIC and there are Army SoS /RICs missing (AP5/AJ2 etc).</p> <p><u>DLMSO Response:</u> The wholesale ICP RIC list was taken from the Key LMARS Report Reference Table D. The Wholesale ICP RICs listed in that table, at time of publication of this ADC, are: A12, A35, AKZ, AP5, B14, B16, B17, B64, B69, BAM, BR4. If this is not the correct Army wholesale ICP RIC list, Army must coordinate changes with the Pipeline Measurement PRC. Army was advised of same by DLMSO email 4/25/2014.</p> <p>The Key LMARS Report Reference Table D is in the DLM 4000.25, Volume 6, Chapter 4, Paragraph C4.6.3.1.2., available at: www.dla.mil/j-6/dlms0/eLibrary/Documents/PMPRC/KeyLMARSTables.docx</p>
Navy	<p>Navy concurs with comment:</p> <p>Navy ERP requested the Excel layout (Figure 2) for the download data file have the document and suffix displayed as separate fields.</p>	<p>Confirmed with DLA Transaction Services that the document number and suffix are separate fields and updated Figure 2 and associated text.</p>
Marine Corps	<p>Concur as written</p>	<p>Noted</p>
Air Force	<p>Concurs without comment</p>	<p>Noted</p>
DLA	<p>Concurs without comment</p>	<p>Noted</p>
USTRANSCOM	<p>USTRANSCOM 'abstains', there is no impact to TRANSCOM systems based on this change.</p>	<p>Noted</p>

Component	Responses/Comments to PDC 1086	Disposition
DLA Transaction Services	<p>Concurs:</p> <ol style="list-style-type: none"> 1. Depending on the size of the download file, more than one csv file may need to be created based on time and size of file. 2. Bill-To DoDAAC will be based on the signal code values. We currently base ship-to DoDAAC on signal code. 3. DLA Transaction Services Implementation estimates: <ul style="list-style-type: none"> • Eliminate the Shipment Discrepancy Report by Depot (MRA04) - 3 months from date of ADC. • Create New Materiel Receipt Acknowledgement Source of Supply Report - 12 months from date of ADC, but will not have download capability and will still have all reqns, not checking for [PDC 1087] DRF receipt. • Create Requisition/Initial Supply Transaction Download File - 18 months from data of ADC. This requires LOTS changes to get the COMMRI which increases the time. 4. LMARS Question: If the LMARS wants the new COMMRI fields sent on the LMARS download file we will need to increase the size. 	<p>Noted</p> <p>The legacy MILS method using signal codes was included in the transaction data download for that reason; however, we also included the DLMS method in anticipation of DLMS implementations, to include DLA Transaction Services.</p> <p>Implementation estimates - Noted</p> <p>Noted. Army did not identify a requirement to include the COMMRI in the LMARS download file.</p>

Enclosures

Enclosure 1 to ADC 1086 – Source of Supply MRA Report Display

Source of Supply MRA Report Overview

The Source of Supply reports will include separate reports for Source of Supply Stock Shipments (Report Number MRA38), Source of Supply DVD Shipments (MRA39), and a third report that combines the totals for Stock and DVD Shipments (MRA40).

The following descriptions for the Summary Report, Detail Report and MRA Ship-To DoDAAC Detail are for the Combined Stock and DVD report (MRA40). The separate Stock (MRA38) and DVD (MRA39) reports will reflect the same layout and logic, the exception is segregating the reports according to the existing rules used to separate DVD (MRA02) and Stock (MRA36) shipments.

Summary Report Logic

The report logic to identify shipments requiring an MRA remains the same as MRA02, MRA36 and MRA37.

- The count for the Source of Supply is the sum of qualified shipments directed by the component wholesale ICP RICs and displayed by the receiving component. Wholesale ICP RICs are identified by the “RIC To” for qualifying requisitions and the “RIC From” for qualifying materiel release order transactions.
- Produce a report by Source of Supply. Only use wholesale ICP RICs identified in LMARS documentation and DVD records (existing rules) ~~and records where the Discrepancy Code is set~~. DLA requested the RIC for DLA Disposition Services S9D be included to incorporate the numbers for S9W (DLA Disposition Services–RCP). On the detail page, each wholesale ICP RIC will have a link to the MRA Query containing a hyperlink to WebVLIPS for each qualified shipment for which an MRA was Not Received.
- **Summary Report Columns** (Combined data for Stock and DVD arrayed similar to MRA37).
 - Column 1 (Source of Supply – Receiving Component totals). DoD Component/ Agency of the “RIC To” for qualifying requisitions and the “RIC From” for qualifying materiel release order transactions.
 - Column 2 (Receiving Component – DoD Component of the ship-to DoDAAC). This column identifies the individual Component for the high level overview of the Source of Supply, MRA Not Received numbers.
 - Column 3 (Count) is the count of qualified shipments in the allotted timeframe (within 60/120 calendar days of shipment to accommodate the MRA reporting period plus the MRA follow-up response timeframe) and broken out according to the logic of the first two columns.
 - Column 4 (\$ Value) is the extended dollar value for the count in column 3.
 - Column 5 (Count) is the count of qualified shipments for which no MRA was received in the allotted timeframe (within 60/120 calendar days of shipment to accommodate the MRA reporting period plus the MRA follow-up response timeframe).

- Column 6 (Percent of Count) is the percentage of qualified shipments for which an MRA was Not Received in the allotted timeframe.
- Column 7 (\$ Value) is the extended dollar value for the count in column 5.
- Column 8 (Percent of \$ Value) is the percentage of value for the qualified shipments for which an MRA was Not Received in the allotted timeframe.

Figure 1 is an example of the *Summary Report Materiel Receipt Acknowledgement Report by Source of Supply (Wholesale ICP) – Stock and DVD*

Figure 1. Summary Report MRA by Source of Supply – Stock and DVD

Summary Report Materiel Receipt Acknowledgement Report by Source of Supply (Wholesale ICP) Stock and DVD Report Month (Month Year)							
		Shipments Requiring MRA		MRA Not Received			
Source of Supply	Receiving Component	Count	\$ Value	Count	Percent of Count	\$ Value	Percent of \$ Value
Army	Army						
	Air Force						
	Navy						
	Marines						
	Coast Guard						
	DLA						
	Other DoD						
	Other						
Air Force	Army						
	Air Force						
	Navy						
	Marines						
	Coast Guard						
	DLA						
	Other DoD						
	Other						
Navy	Army						
	Air Force						
	Navy						
	Marines						
	Coast Guard						
	DLA						
	Other DoD						
	Other						
Marines	Army						
	Air Force						
	Navy						
	Marines						
	Coast Guard						
	DLA						
	Other DoD						
	Other						

Figure 1. Summary Report MRA by Source of Supply – Stock and DVD

Summary Report Material Receipt Acknowledgement Report by Source of Supply (Wholesale ICP) Stock and DVD Report Month (Month Year)							
		Shipments Requiring MRA		MRA Not Received			
Source of Supply	Receiving Component	Count	\$ Value	Count	Percent of Count	\$ Value	Percent of \$ Value
DLA	Army						
	Air Force						
	Navy						
	Marines						
	Coast Guard						
	DLA						
	Other DoD						
	Other						
Coast Guard	Detail TBD						
Other DoD	Detail TBD						
Other	Detail TBD						

Detail Report Logic

- Produce a detail report by Source of Supply (wholesale ICP). Use only valid wholesale ICP RICs, identified in LMARS and DVD records (existing rules) and records where the discrepancy code is set. DLA requested the RIC for DLA Disposition Services S9D be included to incorporate the numbers for S9W (DLA Disposition Services –RCP). Each wholesale ICP RIC will have a link to the MRA Query containing a link to WebVLIPS for each qualified shipment for which an MRA was Not Received.
- On the Detail page (after clicking on the *Source of Supply* in the Summary Report), the *Source of Supply* column will display the relevant wholesale ICP RICs for the specific Component Sources of Supply.
- The *Source of Supply* MRA data will display by *Receiving Component*.
- The count for the *Source of Supply* is the sum of qualified shipments by the individual component wholesale ICP RIC and displayed by the *Receiving Component*. The wholesale ICP RICs listed in the Detail Reports are identified in the LMARS documentation. The existing MRA criteria to identify DVD transactions applies. Wholesale ICP RICs are identified by the “RIC To” for qualifying requisitions and the “RIC From” for qualifying materiel release order transactions.
- On the Detail page, selecting a *Receiving Component* will access the Ship-To DoDAAC Detail Report that breaks down the MRA data by individual DoDAAC.

Detail Report Columns

- Column 1 (*Source of Supply*). “RIC To” for the DoD Component selected in the Summary Report (“RIC To” for qualifying requisitions and the “RIC From” for qualifying materiel release order transactions).
- Column 2 (Receiving Component). This column identifies the individual Component for the high level overview of the Source of Supply, MRA Not Received numbers.
- Column 3 (*Count*). This is the count of qualified shipments in the allotted timeframe (within 60/120 calendar days of shipment to accommodate the MRA reporting period plus the MRA follow-up response timeframe), with the dollar value and broken out by the selected Source of Supply, wholesale ICP and Receiving Component.
- Column 4 (*\$ Value*) is the extended dollar value for the count in column 3.
- Column 5 (*Count*) is the count of qualified shipments for which no MRA was received in the allotted timeframe (within 60/120 calendar days of shipment to accommodate the MRA reporting period plus the MRA follow-up response timeframe).
- Column 6 (*Percent of Count*) is the percentage of qualified shipments for which an MRA was Not Received in the allotted timeframe.
- Column 7 (*\$ Value*) is the extended dollar value for the count in column 5.
- Column 8 (*Percent of Value*) is the percentage of value for the qualified shipments for which an MRA was Not Received in the allotted timeframe.

Figure 2 (DLA) and Figure 3 (Army) show examples of the *Detail Reports, Materiel Receipt Acknowledgement (MRA) Report by Source of Supply (Wholesale ICP) Stock and DVD*.

Selecting “DLA” in the Source of Supply column of the Summary Report (Figure 1) will access the Detail Reports page for DLA (Figure 2).

Figure 2. Detail Reports MRA by Source of Supply – Stock and DVD (DLA Example)

Detail Reports Materiel Receipt Acknowledgement Report by Source of Supply (Wholesale ICP) Stock and DVD Wholesale ICPs – DLA Report Month (Month Year)							
Source of Supply	Receiving Component	Shipments Requiring MRA		MRA Not Received			
RIC		Count	\$ Value	Count	Percent of Count	\$ Value	Percent of \$ Value
SMS	Army						
	Air Force						
	Navy						
	Marines						
	Coast Guard						
	DLA						
	Other DoD						
	Other						
S9D*	Army						
	Air Force						
	Navy						
	Marines						
	Coast Guard						
	DLA						
	Other DoD						
	Other						

*S9D includes number for S9W

Selecting “Army” in the Source of Supply column of the Summary Report (Figure 1) will access the Detail Reports page for the Army (Figure 3).

Figure 3. Detail Reports MRA by Source of Supply – Stock and DVD (Army Example)

Detail Reports Materiel Receipt Acknowledgement Report by Source of Supply (Wholesale ICP) Stock and DVD Wholesale ICPs – Army Report Month (Month Year)							
Source of Supply	Receiving Component	Shipments Requiring MRA		MRA Not Received			
RIC		Count	\$ Value	Count	Percent of Count	\$ Value	Percent of \$ Value
A12	Army						
	Air Force						
	Navy						
	Marines						
	Coast Guard						
	DLA						
	Other DoD						
	Other						
A35	Army						
	Air Force						
	Navy						
	Marines						
	Coast Guard						
	DLA						
	Other DoD						
	Other						
AKZ	Not Shown ¹						
AP5	Not Shown						
B14	Not Shown						
B16	Not Shown						
B17	Not Shown						
B64	Not Shown						
B69	Not Shown						
BR4	Not Shown						
BAM	Not Shown						

¹ For illustrative purposes, the Receiving Component breakout is only shown for the first two wholesale ICP RICs.

Ship-To DoDAAC MRA Detail Report Logic – By Wholesale ICP

- Produce a DoDAAC Detail Report that shows shipments from the wholesale ICP and Receiving Component selected in the MRA Detail Report. The Ship-To DoDAAC MRA Detail Report contains a listing of the ship-to DoDAAC and the associated MRA data. Each DoDAAC will link to the MRA Query Report containing a link to WebVLIPS for each qualified shipment for which an MRA was Not Received.
- On the Detail page, selecting a wholesale ICP will access the DoDAAC Detail Report that breaks down the MRA data by individual ship-to DoDAAC.
- Note: This report is the same layout and general logic as the existing MRA Detail reports that provide the DoDAAC level detail and link to the MRA Query page.

DoDAAC MRA Detail Report Columns

- Column 1 (*Ship-To DoDAAC*). This column provides the ship-to DoDAACs for the wholesale ICP RIC selected from the previous Detail Report.
- Column 2 (*Count*). This is the count of qualified shipments for which no MRA was received in the allotted timeframe (within 60/120 calendar days of shipment to accommodate the MRA reporting period plus the MRA follow-up response timeframe).
- Column 3 (*\$ Value*) is the extended dollar value for the count in column 2.
- Column 4 (*Count*) is the count of count of qualified shipments in the allotted timeframe (within 60/120 calendar days of shipment to accommodate the MRA reporting period plus the MRA follow-up response timeframe).
- Column 5 (*Percent of Count*) is the percentage of qualified shipments for which an MRA was Not Received in the allotted timeframe.
- Column 6 (*\$ Value*) is the extended dollar value for the count in column 4.
- Column 7 (*Percent of Value*) is the percentage of value for the qualified shipments for which and MRA was Not Received in the allotted timeframe.

Ship-To DoDAAC MRA Detail Report. Figure 4 displays an example of the *Ship-To DoDAAC MRA Detail Report – Wholesale ICP*. Selecting “SMS” as the “wholesale ICP” RIC on the DLA Detail Report (Figure 2), will display a list of ship-to DoDAACs with qualifying shipments (Figure 4).

Figure 4. *Ship-To DoDAAC MRA Detail Report – Stock and DVD (DLA Example)*

Ship-To DoDAAC MRA Detail Report Material Receipt Acknowledgement (MRA) Report by Ship-To DoDAAC – Stock and DVD Wholesale ICP – SMS Report Month (Month Year)						
Ship-To DoDAAC	Shipments Requiring MRA		MRA Not Received			
	Count	\$ Value	Count	Percent of Count	\$ Value	Percent of \$ Value
SA7042						
SB3103						
SB3106						
SB3200						
SB3212						

Ship-To DoDAAC MRA Document Query. Selecting the DoDAAC SB3200 in the above example (Figure 4) will display a list of document numbers for qualified shipments for which an MRA was Not received in the allotted timeframe (Figure 5).

Figure 5. *WebVLIPS – MRA Document Query (DLA Example)*

MRA Query for MRA01 33 SB3200			
Page 1 of 4			
Total Found: 154			
1	SB320030392013	11	SB330030460005
2	SB320030392014	12	SB330030460011
3	SB320030392015	13	SB330030510003
4	SB32003053001E	14	SB330030520001
5	SB330022482007A	15	SB330030570015
6	SB330022482007B	16	SB330030570024
7	SB330023460004	17	SB330030570025
8	SB330030100027	18	SB330030580003
9	SB330030380010	19	SB330030580004
10	SB330030380014	20	SB330030580005
		21	SB330030580006
		22	SB330030580007
		23	SB330030590002
		24	SB330030590004
		25	SB330030590005
		26	SB330030590006
		27	SB330030590008
		28	SB330030590009
		29	SB330030590010
		30	SB330030590011
		31	SB330030590012
		32	SB330030590013
		33	SB330030590014
		34	SB330030590019
		35	SB330030590020
		36	SB330030590021
		37	SB330030590022
		38	SB330030590023
		39	SB330030590024
		40	SB330030590025

UNCLASSIFIED - FOUO

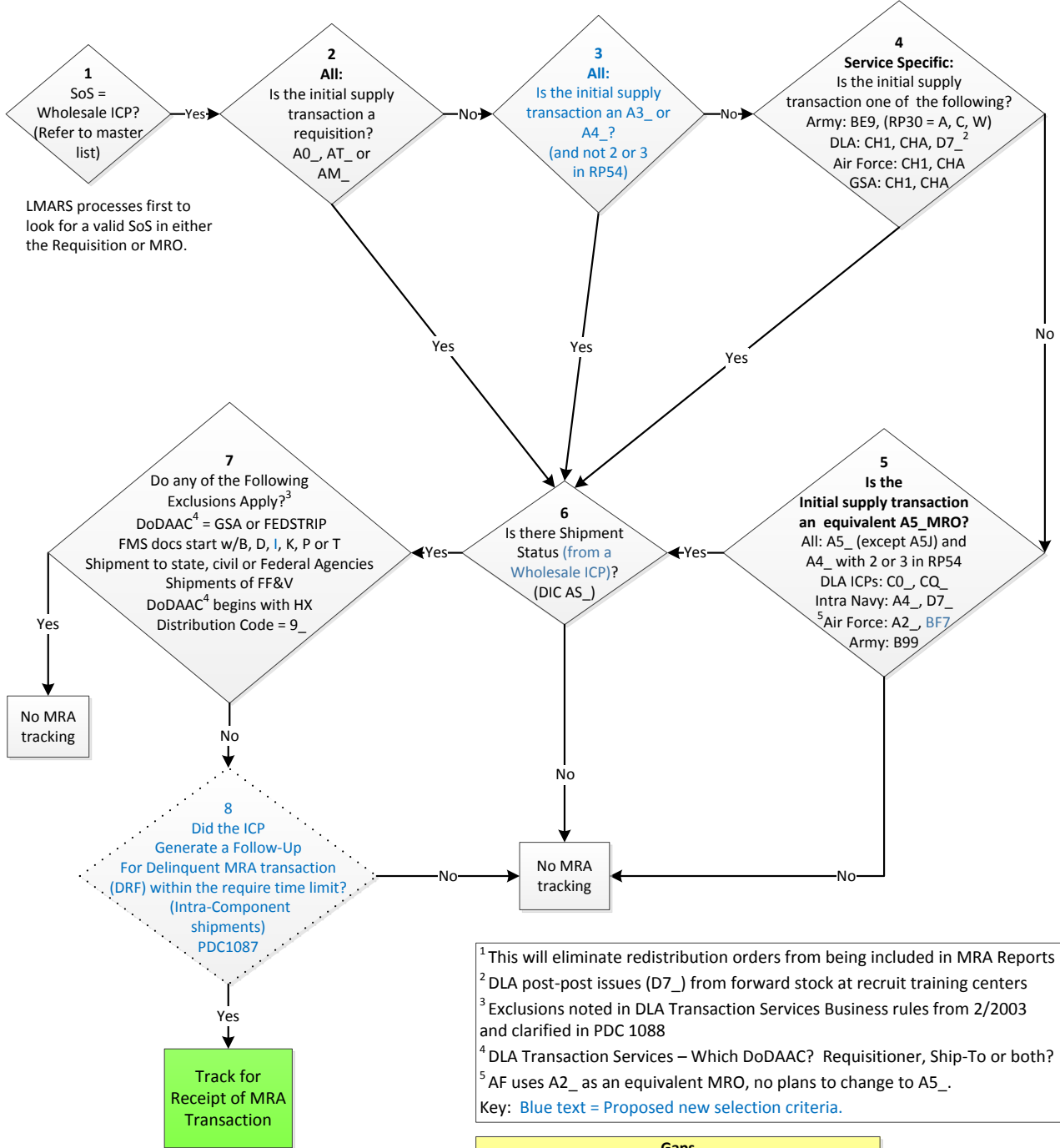
Comparable examples for the Army (Figure 3) are not shown but the concept is the same for all Service wholesale ICPs.

The requirement identified in this ADC for the requisition/initial supply transaction data download list also applies to the MRA by Source of Supply Report.

Enclosure 2 to ADC 1086 - MRA Decision Tree for Transactions Subject to MRA (PDC 1088, Reference 3.d.)

Capture Shipments out of Wholesale Assets that Qualify for MRA Reporting

Update MRA Business Rules/Report Logic to require the presence of a requisition or MRO type document to determine MRA report eligibility¹



¹ This will eliminate redistribution orders from being included in MRA Reports
² DLA post-post issues (D7_) from forward stock at recruit training centers
³ Exclusions noted in DLA Transaction Services Business rules from 2/2003 and clarified in PDC 1088
⁴ DLA Transaction Services – Which DoDAAC? Requisitioner, Ship-To or both?
⁵ AF uses A2_ as an equivalent MRO, no plans to change to A5_
 Key: Blue text = Proposed new selection criteria.

Gaps
 Offline DLA processes for Subsistence, Medical; and Maintenance Repair and Operations. These are known MRA gaps because no shipment status is created.

A2 – Redistribution Order (RDO), A3 – Passing Order, A4 – Referral Order, Lateral Redistribution Order (LRO), A5 – Materiel Release Order (MRO), A5J – Materiel Release Order, Image Transactions – (CH_), Post Post (CO_, CQ_).

Revised: May 5, 2014

**Enclosure 3 to ADC 1086 – DLM 4000.25-4, DAAS Manual, Appendix 5 Additions
for Source of Supply MRA Report Descriptions**

Add the MRA Report descriptions in this enclosure to DLM 4000.25-4, DAAS Manual, Appendix 5, Logistics Information Data Services.

AP5.2.12.5.17. MRA38 – Source of Supply MRA Stock Summary. Shows stock shipments from wholesale inventory for all DoD Components/Participating Agencies and all categories by the wholesale ICP (Source of Supply) directing the shipment, and by receiving Component. The count of qualified shipments is matched against MRA received/MRA not received, and for MRAs not received, the percentage of the count and value is computed and shown:

Column 1 – Source of Supply	Identifies the DoD Component of the “RIC To” for qualifying requisitions and the “RIC From” for qualifying materiel release order transactions
Column 2 – Receiving Component	DoD Component of the ship-to DoDAAC
Column 3 – Shipments Requiring MRA, Count	Count of qualified stock shipments from wholesale inventory that were filled in the allotted timeframe
Column 4 – Shipments Requiring MRA, Value	Extended dollar value of all qualified shipments in the allotted timeframe
Column 5 – MRA Not Received, Count	Count of qualified shipments for which no MRA was received in the allotted timeframe (within 60/120 calendar days of shipment to accommodate the MRA reporting period plus the MRA follow-up response timeframe)
Column 6 – MRA Not Received, Percent of Count	Percentage (by count) of the qualified shipments for which no MRA was received in the allotted timeframe (column 5 divided by column 3)
Column 7 – MRA Not Received, Value	Extended dollar value of the qualified shipments that did not receive an MRA in the allotted timeframe
Column 8 – MRA Not Received, Percent of Value	Percentage (by value) of the dollar value for qualified shipments that did not receive an MRA in the allotted timeframe (column 7 divided by column 4)

AP5.2.12.5.17.1. MRA38d – Source of Supply MRA Stock Detail.

Shows stock shipments from wholesale inventory for all DoD Components/Participating Agencies and all categories by the wholesale ICP directing the shipment, and by receiving Component. The count of qualified shipments is matched against MRAs received/MRAs not received, and for MRAs not received, the percentage of the count and value is computed and shown:

Column 1 – Source of Supply	RIC for the DoD Component selected in the Summary Report for qualifying requisitions and the “RIC From” for qualifying materiel release order transactions
Column 2 – Receiving Component	DoD Component of the ship-to DoDAAC

Column 3 – Shipments Requiring MRA, Count	Count of qualified shipments from wholesale inventory that were filled in the allotted timeframe
Column 4 – Shipments Requiring MRA, Value	Extended dollar value of all qualified shipments in the allotted timeframe
Column 5 – MRA Not Received, Count	Count of qualified shipments for which no MRA was received in the allotted timeframe (within 60/120 calendar days of shipment to accommodate the MRA reporting period plus the MRA follow-up response timeframe)
Column 6 – MRA Not Received, Percent of Count	Percentage (by count) of the qualified shipments for which no MRA was received in the allotted timeframe (column 5 divided by column 3)
Column 7 – MRA Not Received, Value	Extended dollar value of the qualified shipments that did not receive an MRA in the allotted timeframe
Column 8 – MRA Not Received, Percent of Value	Percentage (by value) of the qualified shipments that did not receive an MRA in the allotted timeframe (column 7 divided by column 4)

AP5.2.12.5.17.2. MRA38dd – Source of Supply DoDAAC MRA Stock Detail. Selecting a source of supply in the previous MRA 38d, Source of Supply DoDAAC MRA Stock Detail Report will show stock shipments for ship-to DoDAACs with qualifying shipments. The count of qualified shipments is matched against MRAs received/MRAs not received, and for MRAs not received, the percentage of the count and value is computed and shown:

Column 1 – Ship-To DoDAAC	Ship-to DoDAACs for the wholesale ICP RIC selected from the Detail Report
Column 2 – Shipments Requiring MRA, Count	Count of qualified stock shipments from wholesale inventory that were filled in the allotted timeframe
Column 3 – Shipments Requiring MRA, Value	Extended dollar value of qualified shipments in the allotted timeframe
Column 4 – MRA Not Received, Count	Count of qualified shipments for which no MRA was received in the allotted timeframe (within 60/120 calendar days of shipment to accommodate the MRA reporting period plus the MRA follow-up response timeframe)
Column 5 – MRA Not Received, Percent of Count	Percentage (by count) of the qualified shipments for which no MRA was received in the allotted timeframe (column 4 divided by column 2)
Column 6 – MRA Not Received, Value	Extended dollar value of the qualified shipments that did not receive an MRA in the allotted timeframe.
Column 7 – MRA Not Received, Percent of Value	Percentage (by value) of the qualified shipments that did not receive an MRA in the allotted timeframe (column 6 divided by column 3)

AP5.2.12.5.18. MRA39 – Source of Supply MRA DVD Summary. Shows DVD¹⁴ shipments from wholesale inventory for all DoD Components/Participating Agencies and all categories by the wholesale ICP (Source of Supply) directing the shipment, and by receiving Component. The count of qualified shipments is matched against MRAs received/MRAs not received, and for MRAs not received, the percentage of the count and value is computed and shown:

Column 1 – Source of Supply	Identifies the DoD Component of the “RIC To” for qualifying requisitions and the “RIC From” for qualifying materiel release order transactions
Column 2 – Receiving Component	DoD Component of the ship-to DoDAAC
Column 3 – Shipments Requiring MRA, Count	Count of qualified shipments that were filled via DVD in the allotted timeframe
Column 4 – Shipments Requiring MRA, Value	Extended dollar value of qualified DVD shipments in the allotted timeframe
Column 5 – MRA Not Received, Count	Count of <i>qualified shipments for which no MRA was received in the allotted timeframe (within 60/120 calendar days of shipment to accommodate the MRA reporting period plus the MRA follow-up response timeframe)</i>
Column 6 – MRA Not Received, Percent of Count	Percentage of the qualified shipments that did not receive an MRA in the allotted timeframe (column 5 divided by column 3)
Column 7 – MRA Not Received, Value	Extended dollar value of the qualified shipments that did not receive an MRA in the allotted timeframe
Column 8 – MRA Not Received, Percent of Value	Percentage (by value) of the qualified shipments that did not receive an MRA in the allotted timeframe (column 7 divided by column 4)

AP5.2.12.5.18.1. MRA39d – Source of Supply MRA DVD Detail. Shows DVD shipments from wholesale inventory for all DoD Components/Participating Agencies and all categories by the wholesale ICP directing the shipment, and by receiving Component. The count of qualified DVD shipments is matched against MRAs received/MRAs not received, and for MRAs not received, the percentage of the count and value is computed and shown:

Column 1 – Source of Supply	RIC for the DoD Component selected in the Summary Report for qualifying requisitions and the “RIC From” for qualifying materiel release order transactions
Column 2 – Receiving Component	DoD Component of the ship-to DoDAAC
Column 3 – Shipments Requiring MRA, Count	Count of qualified shipments that were filled via DVD in the allotted timeframe

¹⁴ DVD is identified by the DLMS 870S (Supply Status), (1/BSR01/20), Status Report Code 5 (Notice of Response to Direct Vendor Delivery)/MILSTRIP legacy Document Identifier Code (DIC) AB_ Direct Delivery Notice; or Status Report Code 4, (Response to Requisition (Supply Status))/MILSTRIP legacy DIC AE_ Supply Status, with Supply Status Code:

- BV – Requisition or requisition alert item procured and on contract for direct shipment to consignee, or
- BZ – Requisition or requisition alert is being processed for direct delivery procurement.

Column 4 – Shipments Requiring MRA, Value	Extended dollar value of qualified DVD shipments in the allotted timeframe
Column 5 – MRA Not Received, Count	Count of qualified shipments for which no MRA was received in the allotted timeframe (within 60/120 calendar days of shipment to accommodate the MRA reporting period plus the MRA follow-up response timeframe)
Column 6 – MRA Not Received, Percent of Count	Percentage (by count) of the qualified shipments for which no MRA was received in the allotted timeframe (column 5 divided by column 3)
Column 7 – MRA Not Received, Value	Extended dollar value of the qualified shipments that did not receive an MRA in the allotted timeframe
Column 8 – MRA Not Received, Percent of Value	Percentage (by value) of the qualified shipments that did not receive an MRA in the allotted timeframe (column 7 divided by column 4)

AP5.2.12.5.18.2. MRA39dd – Source of Supply DoDAAC MRA DVD Detail.

Selecting a source of supply in the previous MRA39d, Source of Supply DVD Detail Report will show DVD shipments for ship-to DoDAACs with qualifying shipments. The count of qualified shipments is matched against MRAs received/MRAs not received, and for MRAs not received, the percentage of the count and value is computed and shown:

Column 1 – Ship to DoDAAC	Ship-to DoDAACs for the wholesale ICP RIC selected from the Detail Report
Column 2 – Shipments Requiring MRA, Count	Count of qualified shipments that were filled via DVD in the allotted timeframe
Column 3 – Shipments Requiring MRA, Value	Extended dollar value of qualified DVD shipments in the allotted timeframe
Column 4 – MRA Not Received, Count	Count of qualified DVD shipments for which no MRA was received in the allotted timeframe (within 60/120 calendar days of shipment to accommodate the MRA reporting period plus the MRA follow-up response timeframe)
Column 5 – MRA Not Received, Percent of Count	Percentage (by count) of the qualified shipments that did not receive an MRA in the allotted timeframe (column 4 divided by column 2)
Column 6 – MRA Not Received, Value	Extended dollar value of the qualified shipments that did not receive an MRA in the allotted timeframe
Column 7 – MRA Not Received, Percent of Value	Percentage (by value) of the qualified shipments that did not receive an MRA in the allotted timeframe (column 6 divided by column 3)

AP5.2.12.5.19. MRA40 – Source of Supply Stock and DVD Summary. Shows Stock and DVD shipments from wholesale inventory for all DoD Components/ Participating Agencies and all categories by the wholesale ICP (Source of Supply) directing the shipment, and by receiving Component. MRA40 combines MRA38 (Stock Shipment) and MRA39 (DVD Shipment) Summary Reports. The count of qualified shipments is matched against MRAs received/MRAs not received, and for MRAs not received, the percentage of the count and value is computed and shown:

Column 1 – Source of Supply	Identifies the DoD Component of the “RIC To” for qualifying requisitions and the “RIC From” for qualifying materiel release order transactions
Column 2 – Receiving Component	DoD Component of the ship-to DoDAAC
Column 3 – Shipments Requiring MRA, Count	Count of qualified Stock and DVD shipments from wholesale inventory that were filled in the allotted timeframe
Column 4 – Shipments Requiring MRA, Value	Extended dollar value of qualified Stock and DVD shipments in the allotted timeframe
Column 5 – MRA Not Received, Count	Count of qualified Stock and DVD shipments for which no MRA was received in the allotted timeframe (within 60/120 calendar days of shipment to accommodate the MRA reporting period plus the MRA follow-up response timeframe)
Column 6 – MRA Not Received, Percent of Count	Percentage (by count) of the qualified Stock and DVD shipments that did not receive an MRA in the allotted timeframe (column 5 divided by column 3)
Column 7 – MRA Not Received, Value	Extended dollar value of the qualified Stock and DVD shipments that did not receive an MRA in the allotted timeframe
Column 8 – MRA Not Received, Percent of Value	Percentage (by value) of the qualified Stock and DVD shipments that did not receive an MRA in the allotted timeframe (column 7 divided by column 4)

AP5.2.12.5.19.1. MRA40d – Source of Supply Stock and DVD Detail.

Shows Stock and DVD shipments from wholesale inventory for all DoD Components/ Participating Agencies and all categories by the wholesale ICP directing the shipment, and by receiving Component. The count of qualified shipments is matched against MRAs received/MRAs not received, and for MRAs not received, the percentage of the count and value is computed and shown:

Column 1 – Source of Supply	RIC for the DoD Component selected in the Summary Report for qualifying requisitions and the “RIC From” for qualifying materiel release order transactions
Column 2 – Receiving Component	DoD Component of the ship-to DoDAAC
Column 3 – Shipments Requiring MRA, Count	Count of qualified Stock and DVD shipments from wholesale inventory that were filled in the allotted timeframe
Column 4 – Shipments Requiring MRA, Value	Extended dollar value of qualified Stock and DVD shipments in the allotted timeframe

Column 5 – MRA Not Received, Count	Count of qualified Stock and DVD shipments for which no MRA was received in the allotted timeframe (within 60/120 calendar days of shipment to accommodate the MRA reporting period plus the MRA follow-up response timeframe)
Column 6 – MRA Not Received, Percent of Count	Percentage (by count) of the qualified Stock and DVD shipments for which no MRA was received in the allotted timeframe (column 5 divided by column 3)
Column 7 – MRA Not Received, Value	Extended dollar value of the qualified shipments that did not receive an MRA in the allotted timeframe
Column 8 – MRA Not Received, Percent of Value	Extended dollar value of the qualified shipments that did not receive an MRA in the allotted timeframe (column 7 divided by column 4)

AP5.2.12.5.19.2. MRA40dd – Source of Supply DoDAAC MRA Stock and DVD Detail. Selecting a source of supply in the previous MRA40d, Source of Supply Stock and DVD – Detail Report will show Stock and DVD shipments for ship-to DoDAACs with qualifying shipments. The count of qualified Stock and DVD shipments is matched against MRAs received/MRAs not received, and for MRAs not received, the percentage of the count and value is computed and shown:

Column 1 – Ship-To DoDAAC	Ship-to DoDAACs for the wholesale ICP RIC selected from the Detail Report
Column 2 – Shipments Requiring MRA, Count	Count of qualified Stock and DVD shipments from wholesale inventory that were filled in the allotted timeframe
Column 3 – Shipments Requiring MRA, Value	Extended dollar value of qualified Stock and DVD shipments in the allotted timeframe
Column 4 – MRA Not Received, Count	Count of qualified Stock and DVD shipments for which no MRA was received in the allotted timeframe (within 60/120 calendar days of shipment to accommodate the MRA reporting period plus the MRA follow-up response timeframe)
Column 5 – MRA Not Received, Percent of Count	Percentage (by count) of the qualified Stock and DVD shipments that did not receive an MRA in the allotted timeframe (column 4 divided by column 2)
Column 6 – MRA Not Received, Value	Extended dollar value of the qualified Stock and DVD shipments that did not receive an MRA in the allotted timeframe
Column 7 – MRA Not Received, Percent of Value	Percentage (by value) of the qualified Stock and DVD shipments that did not receive an MRA in the allotted timeframe (column 6 divided by column 3)