



DLA

DEFENSE LOGISTICS AGENCY

Established 1961



The Nation's Combat Logistics Support Agency

Enterprise Data Management Data Sharing Team

J6DM

Ms. Melody Durham

Ms. Tonja Carter



WARFIGHTER ALWAYS



Data Sharing Overview

The CDAO J6DM Data Sharing team facilitates the controlled exchange of information to DoD and Component Data Lakes, supporting data share requests submitted to the CDAO Data Share Team. Prior to sharing data, a data request is vetted with the customer, approved by the Process Owner, and approved by Privacy, Cybersecurity, Legal.

Data sharing is defined by two categories:

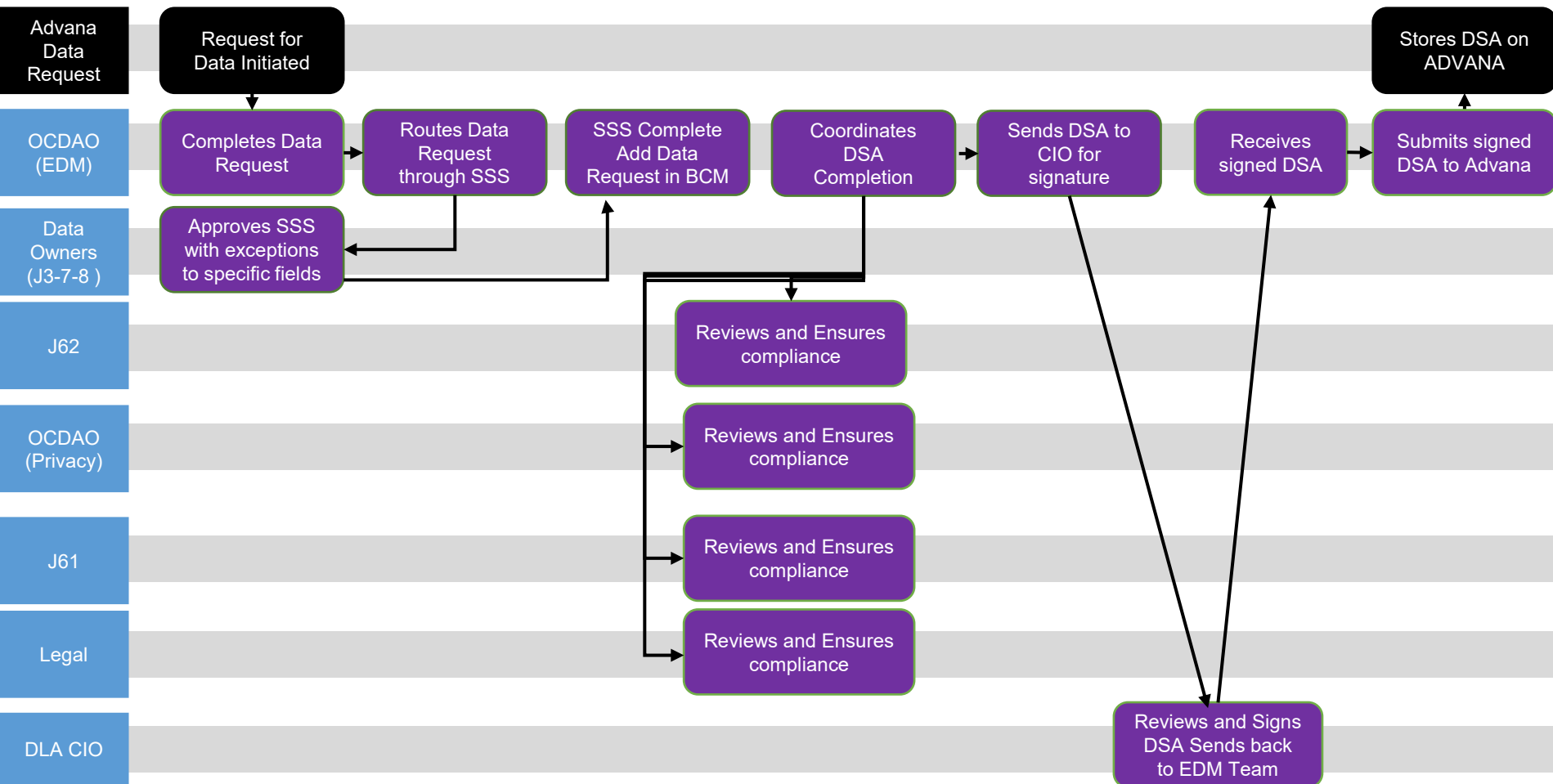
1. The automated transfer of DLA data from a DLA data system to an external (not DLA owned or managed) data system.
2. The automated transfer of an external (not DLA owned or managed) data system's data to a DLA system.

Automated data sharing typically follows one of the following paths:

1. DLA to ADVANA
2. DLA to Service Data Lake/Data Repository
3. DLA to ADVANA to Service Data Lake/Data Repository



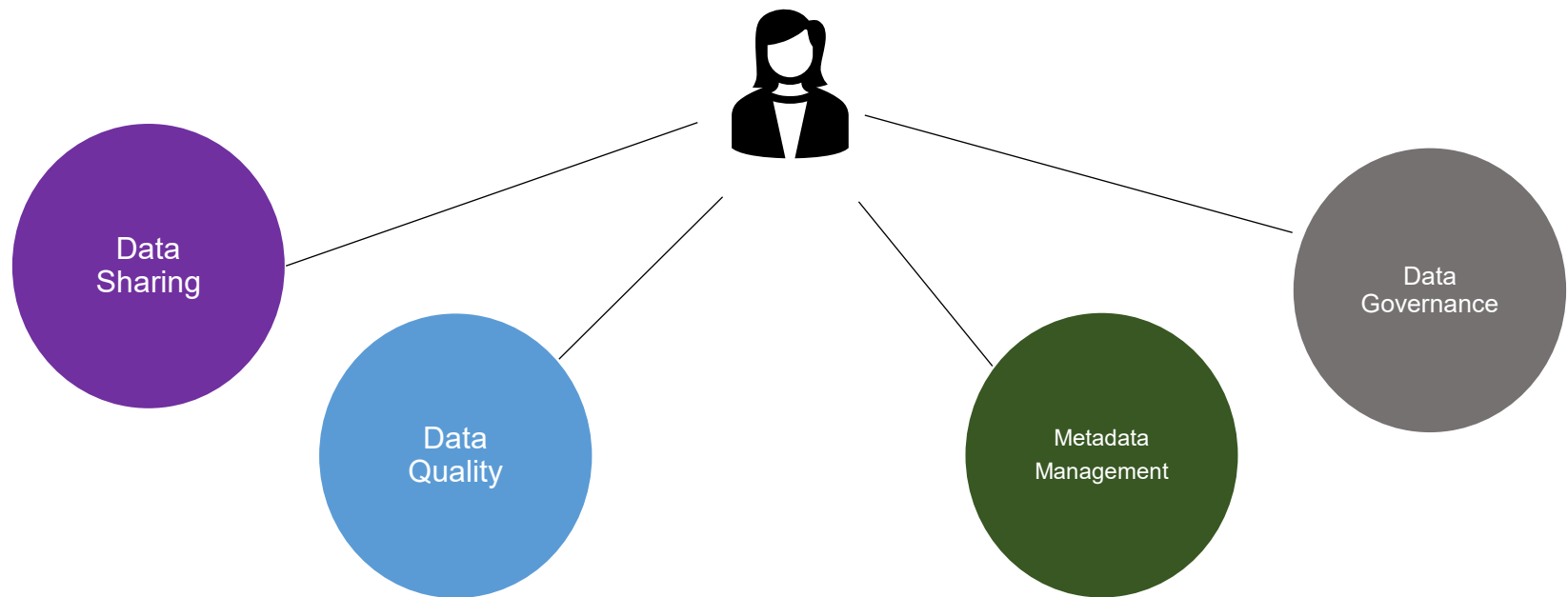
Data Sharing Agreement Process





Enterprise Data Management Mission & Vision

Mission: EDM will govern and ensure a common understanding of data so it can be leveraged to improve efficiency, promote transparency, and provide operational insights for the Warfighter



Vision: EDM will enhance data sharing and enable data to be visible, accessible, understandable, linked, trustworthy, interoperable, and secure (VAULTIS)



ADVANA Overview

Who is ADVANA

ADVANA – a mash-up of the words “Advancing Analytics” – is the DoD multi-domain, enterprise-wide data, analytics, and artificial intelligence (AI) platform that provides military and civilian decision makers, analysts, and builders at all levels unprecedented access to authoritative enterprise data and structured analytics in a scalable, reliable, and secure environment.

ADVANA's Vision

Change decision-making behavior across the DoD enterprise using data, analytics and AI.

ADVANA's Mission

The mission is to make data widely accessible, understandable, and actionable across the DoD enterprise by translating common enterprise data into profound yet actionable insights, decisions, and outcomes.



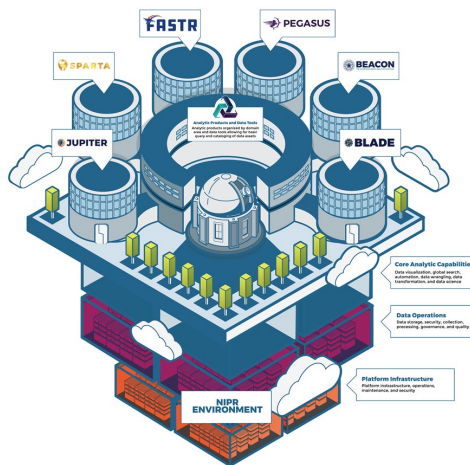


What is a Community Space?

Community Spaces are dedicated locations within Advana for a specific organization or group of users to curate their data and develop their own analytical products

CS users get:

- Complete access to the full stack of Advana tools and services
- Access to DoD data already available within Advana
- Ability to virtually demark and control their data and analytical products
- One-stop shop for aggregating, analyzing, and viewing data and analytics
- Suite of analytic capabilities that will put future data product development in the hands of the community



CS sponsors should:

- Seek to enable insights across their user community
- Grow their user base over time
- Democratize access to data in support of analytics
- Identify community builders to develop additional analytical products
- Plan to put future data product development in the hands of the community

Advana Community Spaces: • Ares (Army FM) • Aurora (USSPACECOM) • Beacon (DHRA) • BLADE (USAF B&L) • FASTR (USAF FM) • Jupiter (DON) • Minuteman (NGB) • Pegasus (USTRANSCOM) • Sparta (USSOCOM)



Community Spaces

Community Space			
Organization	Department of Navy	Air Force A4 Logistics	Special Operations Command
Description	<p>The Naval Enterprise Data & Analytics enclave environment, enables Sailors, Marines, and Civilians to integrate, share, and exploit data at speed and scale across Warfighting, Business, and Readiness pillars for operational advance and increased efficiency. As an enclave environment of Advana, Jupiter focuses on bringing best-of-breed capabilities to advance Naval priorities and enables rapid integration of data into the DoD information environment.</p> <p>Learn More</p>	<p>BLADE is the centralized data analytics solution for the Department of the Air Force's Logistics, Engineering, and Force Protection. The enterprise hub makes data available on demand in near real-time for enhanced decision support, delivers predictive/prognostics analytics, and eliminates redundant interfaces and data environments. As an enclave environment of Advana, BLADE enables the DoD to rapidly identify global requirements needed to support operational planning in response to multiple situations or enemy challenges.</p> <p>Learn More</p>	<p>SPARTA is US SOCOM's data and analytics hub that will make data available on demand in near real-time for decision support, deliver predictive/prognostics analytics, eliminate redundant interfaces by becoming a critical piece of USSOCOM's Information and Analytics environment. SPARTA will be an enterprise hub for establishing interfaces (or data federation), reduce redundant data environments, and analytics.</p> <p>Learn More</p>



Community Spaces

Community Space	 PEGASUS	 FASTR BETTER. FASTER. SMARTER. <small>FINANCIAL AIR AND SPACE TEAM RESOURCES</small>	 BEACON <small>THE ENTERPRISE PEOPLE ANALYTICS PLATFORM</small>	 ARES <small>ANALYTICS & REPORTING ENTERPRISE SYSTEM</small>
Organization	U.S. Transportation Command	Air Force Financial Management & Comptroller (SAF/FM)	Office of the Under Secretary of Defense for Personnel and Readiness (OUSD P&R)	Assistant Secretary of the Army for Financial Management and Comptroller (ASA (FM&C))
Description	<p>USTRANSCOM conducts globally integrated mobility operations, leads the broader Joint Deployment and Distribution Enterprise, and provides enabling capabilities to project and sustain the Joint Force in support of national objectives. It supports the other U.S. combatant commands, the military services, defense agencies, and other government organizations in achieving mission success.</p> <p>Pegasus is an enterprise-wide data analytics platform that leverages the Department's deployment and distribution data to enable advanced analytics and data-driven insights that better inform decision-making within USTRANSCOM. With Pegasus, USTRANSCOM is advancing warfighters' ability to make better, faster</p>	<p>FASTR's mission is to employ streamlined and automated advanced data analytics through a unified data model for enhancing accountability and delivering rapid and accurate actionable insights to Airmen and Guardians. This enterprise data analytics environment is designed to transform SAF/FM through BETTER fiscally informed decision-making, with FASTER and enhanced mission precision, using SMARTER enterprise data and analytics.</p> <p>Learn More</p>	<p>Beacon is an enterprise-wide collaboration environment, leveraging the DoD's person-based, human resources data to enable advanced analytics and data-driven insights and better inform decision-making within the Office of the Under Secretary of Defense for Personnel and Readiness.</p> <p>Learn More</p>	<p>The Analytics and Reporting Enterprise System (ARES) is an enterprise data analytics platform for the Army financial management community to access data on demand and create new insights. ARES empowers users to leverage data to deliver capabilities that help the Army to meet its mission.</p> <p>Learn More</p>



Community Space Portfolio

NAME	ORGANIZATION	LINK
ARES	Department of the Army (DA), Assistant Secretary of the Army, Financial Management and Comptroller (ASA/FM&C)	https://ares.data.mil/
Aurora	US Space Command (USSPACECOM), Data Analytics Branch	TBD
Beacon	Under Secretary of Defense for Personnel and Readiness (OUSD/P&R), Defense Human Resources Activity (DHRA)	https://beacon.data.mil/
BLADE	Department of the Air Force (DAF), A4	https://blade.data.mil/
FASTR	Department of the Air Force (DAF), Assistant Secretary of the Air Force, Financial Management and Comptroller (SAF/FM)	https://fastr.data.mil/
Jupiter	Department of the Navy (DoN), Office of the Chief Data Officer (CDO)	https://jupiter.data.mil/
Mercury	Defense Logistics Agency (DLA), Office of the Chief Data and Analytics Officer (CDAO)	TBD
Minuteman	National Guard Bureau (NGB), Office of the Chief Data Officer (CDO)	TBD
Pegasus	US Transportation Command (USTRANSCOM), Office of the Chief Data Officer (CDO)	https://pegasus.data.mil/
Sparta	US Special Operations Command (USSOCOM), Office of the Chief Digital and Artificial Intelligence Officer (CDAO)	https://sparta.data.mil/



Conclusion

- The Data Sharing Team can assist the Components with Data Lake efforts
- Contact information is J6D CDAO Data Sharing
J6DCDAODataSharing@dla.mil
- External SharePoint is [Enterprise Data Management Toolbox - Home \(dps.mil\)](https://dps.mil)



DLA

DEFENSE LOGISTICS AGENCY

Established 1961



The Nation's Combat Logistics Support Agency

Back-Up



WARFIGHTER ALWAYS



ADVANA Overview

Advana Approach

Discover Data

- Search data sets across platform
- Discover Trending Data
- Get recommendation based on your searches

Understand Data

- View data profile pages
- Understand uses of data
- Request access to data

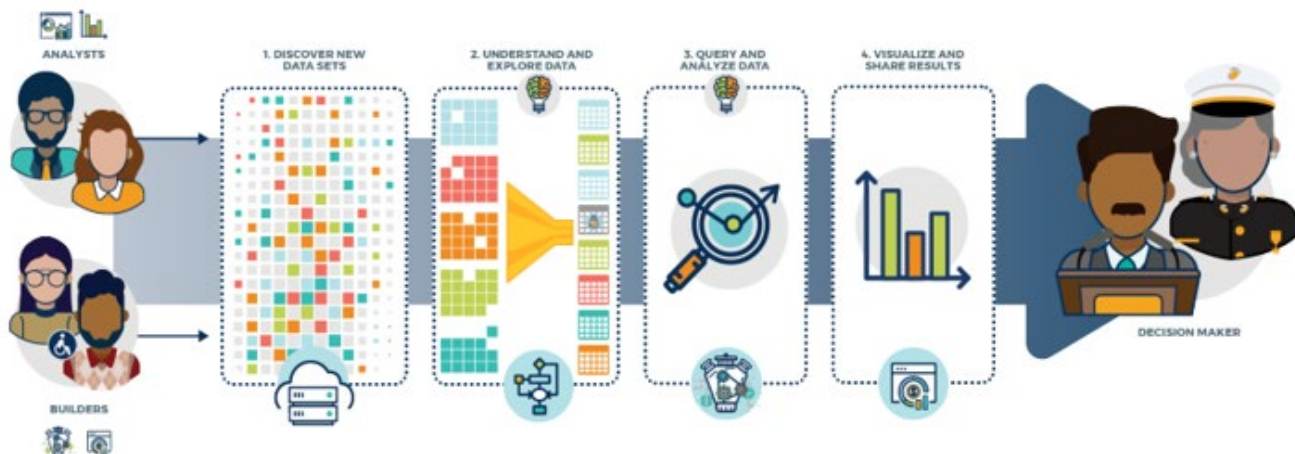
Query and Analyze

- Request new Advana project workspace
- Develop data science and machine learning algorithms against data
- Run containerized models on scalable infrastructure

Visualize Results

- Visualize data and resulting models with drill-down dashboards
- Develop reports accessible to your community

Advana provides users with a seamless experience and journey across the platform from discovering the data all the way to getting insights from the data



Advana Principles

Web-based access
Horizontally (infinitely) scalable
Containerized enclaves
Role based access



Enterprise Data Management Benefits

Metadata

DLA has **no central location** to understand what data we have, where its located or how it can be used; Workforce **relies on knowledge of SMEs** that are subject to retire or turnover; Analysts spend **75% of their time preparing, or waiting on information**, for their analysis

Data Architecture

The existing **data architecture is complex** where analysts go to multiple locations for the same or related data

Data Governance

There is **no shared decision making** over the management of data assets

Data Sharing

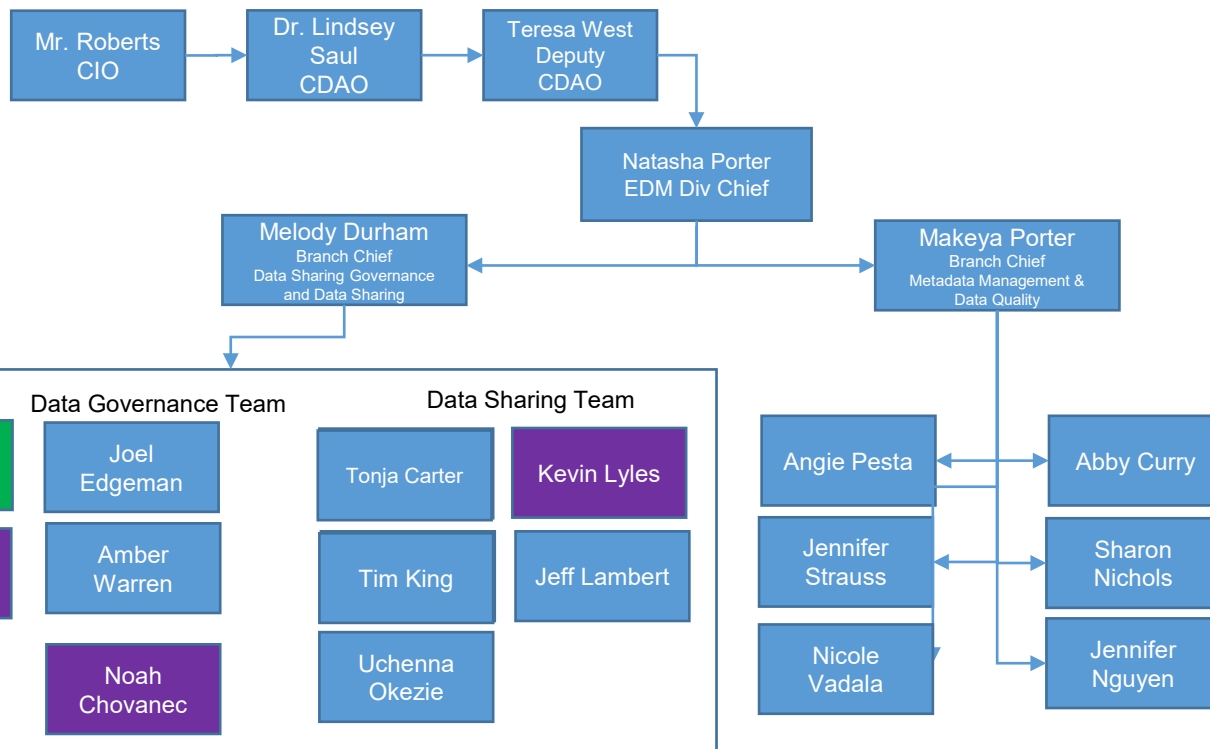
Sharing data across DOD has exploded because **data is a valuable asset used to make strategic decisions**

Data Quality

Lack of process to **ensure integrity and trustworthiness of data** sources and data errors are quickly resolved



Enterprise Data Management Organizational Chart FY23





Reference Material

- [Advana 101 - Advana Knowledge Base - Global Site \(data.mil\)](#)
- [Advana Community Spaces - Advana Knowledge Base - Global Site \(data.mil\)](#)

