



# DEFENSE LOGISTICS AGENCY

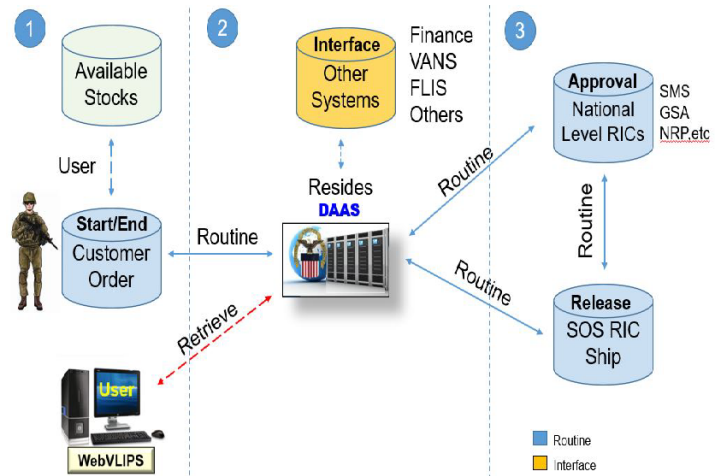
## Web Visual Logistics Information Processing System (WEBVLIPS)



The **WEBVLIPS** is a web-based, controlled query system. It provides access to Logistics On-Line Tracking System (LOTS) repository. The WEBVLIPS customer can track a requisition throughout the logistics pipeline from the time the requisition is released into the DOD pipeline until the materiel is posted to the accountable records at the requisitioning activity. WEBVLIPS allows users to query the life cycle of specific transactions by Activity Address Code, Project Code, RFID, National Stock Number, Transportation Control Number, or Document Number. WEBVLIPS integrates information on DODAAD, MILRI, SOS, project code, port code, status code, unit of issue code, signal code, hold code, advice code, condition code, and mode code to assist the customer in tracking the life cycle of the requisition. WEBVLIPS returns query results to the customers in the form of a web page and provides a Distribution Standard System (DSS) asset query (asset balance/due-in) for the DLA supply centers, except for DLA Aviation.

### WebVLIPS Capabilities

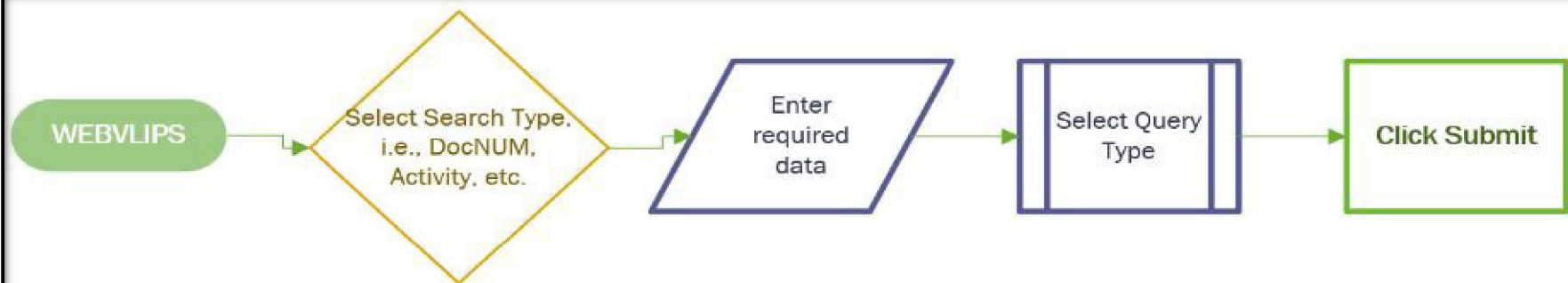
- Provides a simple user interface, allowing the DAAS customer to track requisitions
- Provides quick response time to subscriber inquiries
- Query by: Document Number, Unit Activity, NSN, TCN, RFID Project Code, or Ad Hoc
- Run pre-stored reports based on a document number, address/unit id, & part number
- User requested scans to perform studies of DOD-Wide usage
- Query Life Cycle of specific transactions
- Receive information about materiel management actions, such as requisitions, supply/shipment status and customer confirmations



**WEBVLIPS** retrieves information from the Defense Automatic Addressing System (DAAS). DAAS is the single-entry point for DOD/FED logistics. The DAAS primary business is the accurate routing of electronic logistics requisitions between various federal activities. WEBVLIPS can be accessed by submitting a [System Access Request](#).

DAAS interfaces with many DOD/FED logistics databases and routes transactions to external commercial Value-Added Networks (VANS), for the routing of transactions between DOD customers and some of their Prime Vendor Partners. This means DAAS serves as the central distribution center for the routing of transactions to external sites, Prime Vendors, and internal VAN mailboxes for pickup by Prime Vendors. DAAS/EDI routes transactions to external commercial VANS, such as BidLink.NET/Easylink, who then distribute the transactions to their customers/vendors.

The DAAS uses the following indicators to process logistics transactions: SOS, DODAAC, RIC, MILSTRIP Distribution Code, MILSBILLS Fund Code, MAPAC and Project Code.



**Document Number**  
N421583207V221  
UNCLASSIFIED - FOUO

☒ Pipeline
 ☒ Graph
 ☒ Hist / Excp
 ☒ In Process
 ☒ In Transit
 ☒ DSS
 ☒ RFID

☒ Main
 ☒ PRR
 ☒ REQ
 ☒ CAN
 ☒ STA
 ☒ MRO
 ☒ SHP
 ☒ MRD
 ☒ Help

NSN/PN: <a href="#">5340016722509</a>		QTY: 30	U/I: <a href="#">EA</a>	SUPPAD: <a href="#">Y297-N</a>
ICP: <a href="#">SMS</a>	PRI: <a href="#">03</a>	Current Status: ***	Project CD: <a href="#">5X3</a>	RDD: <a href="#">211</a>
Depot: ***	DTE RLSE CAR: ***	TCN: ***		
* DIC: ***	* FR RIC: ***	* Update: ***	PIID: ***	
Nomen: STANDOFF, THREADED, SPACING			Shipped: ***	
U/P: \$21.15	Signal CD: <a href="#">A</a>	Lev of Serv: ***		
This transaction was initially received by Defense Automatic Addressing System as DOC_ID <a href="#">A0A</a> on 23/07/27 03				
<b>Note:</b> * Latest *** Split Ship				

**Status View** [\(more\)](#)

PROCESSED BY DAAS	S	QTY	DIC	FR RIC	ESD	STA CD	DATE GEN	DOCS RCVD
23/07/27 03		30	<a href="#">AE8</a>	<a href="#">NRP</a>		<a href="#">BM</a>	23/07/27 12	1
23/07/27 04	F	21	<a href="#">AE8</a>	<a href="#">SMS</a>		<a href="#">BA</a>	23/07/27 12	1
23/07/27 04	G	9	<a href="#">AE8</a>	<a href="#">SMS</a>		<a href="#">CS</a>	23/07/27 12	1

On the above example **N421583207V221**, quantity requested was 30 and only 21 were release for shipment (BA) and 9 were canceled (CS), by DLA (SMS). CS was due to suspected excessive quantity on the requisition. The query result can be printed or saved as an 80 card-column, MILSTRIP format.

- CAN - Cancellation View - Contains information from a Cancellation Request transaction(s), including multiple cancellation requests for different suffixes. DOCIDs include AC\_ and AK\_.
- MRD - MRD View - Contains data from the Materiel Receipt Acknowledgment transaction(s), including multiple MRADs for different suffixes received for this document number. DOCIDs include DRA, DRB, and D6S.
- MRO - Materiel Release Order View - Contains data received in MRO transaction(s) received for this Document Number, including multiple MROs on different suffixes (A5, A2, A4, A6)
- PRR - Passing Referral Redistribution View - Contains data from a Passing, Referral or Redistribution Order transaction(s) including multiple Passing, Referral, or Redistribution orders for different suffixes received for this Document Number (A2, A3, A4).
- REQ - Requisition View - Contains additional information from the requisition, or if a requisition was not received, the original transaction received. This tab will indicate A0, AM AT, RQ/MD if a modifier (AM) has been received.
- SHP - Shipment View - Contains information from the Shipment Status transaction(s) including multiple shipment status transaction for different suffixes. This includes the TCN number, and the date materiel was released to the carrier (AS, AR, AU).
- STA - Status View - Contains supply status information from the three most recent important Supply Status transaction(s) including supply status transactions for different suffixes. Status Codes indicating cancellation, backorder, direct vendor delivery, in process of being shipped, or being delayed are retained in date generated order. All other Status Codes are retained only if space exists.