

SOURCE APPROVAL REQUEST

NSN: 1640-01-281-5201 P/N: XXXXX-X

Cage Code: XXXXX



TABLE OF CONTENTS

Appendix A.....	Cover Letter.....	3
Appendix A.i.....	Quality Documents.....	6
Appendix A.ii.....	Company Brochure.....	8
Appendix B.....	Qualification Part Drawings.....	14
Appendix C.....	Qualification Part Manufacturing Plan.....	20
Appendix D.....	Master Tooling Certification.....	22
Appendix E.....	Data Certification.....	23
Appendix F.....	Qualification Part Subcontractor List.....	24
Appendix G.....	Qualification Part Shipping Docs.....	N/A*
Appendix H.....	Similar Part Drawings.....	N/A*
Appendix I.....	Similar Part Shipping Documents.....	N/A*
Appendix J.....	Comparative Analysis.....	N/A*
Appendix K.....	Similar Part Manufacturing Plan.....	N/A*
Appendix L.....	Similar Part Subcontractor List.....	N/A*
Appendix M.....	Test Plans.....	25
Appendix N.....	Licensee Agreement.....	26
Appendix O.....	Summarization, Quality, Deficiency.....	N/A*
Appendix P.....	Inspection Method Sheets.....	27
Appendix Q.....	Engine Parts Special Requirements.....	29
Appendix R.....	Technical Briefing.....	29
Appendix S.....	Sample Part.....	29
Appendix T.....	Value Added.....	29

** These sections are not applicable to a Category III (New Manufacturer) SAR package*

Appendix A - Cover Letter

November xx, xxxx

SUBJECT: Source approval request for NSN 1640-01-281-5201, P/N:

To Whom It May Concern:

Please consider this data package to be a category III source approval request by Company X Incorporated to become an approved source for NSN 1640-01-281-5201. All required data as specified in the source approval guide as outlined in the table of contents has been included.

Part:

NSN: 1640-01-281-5201

CAGE: XXXXX

Part Number: XXXXX-X

Nomenclature: WIRE ROPE ASSEMBLY,SINGLE LEG

Weapon System: LVS POWER UNIT MK48 AND TRAILER FAMILY

Contact Information:

Company X Inc.

CAGE:

Address

Phone:

Fax:

E-mail:

Quality Program:

System used: ISO 9001:2008

Quality Manual: Please see Appendix A.i

Company X Company Information:

A company brochure has been included which outlines Company X capabilities. Please see attached information in Appendix A.ii

Company X Incorporated requests that we be classified as a manufacturer for source approval requests submitted to any of the engineering service activities for review. We are not a distributor but an engineering firm which acts as a system integrator for government contracts. Company X Inc, as the prime contractor, is responsible for technical and financial liabilities on all contracts we supply.

Systems Integration:

Most repair parts are not simply a piece of metal machined into the final product. Usually there are multiple operations at different facilities which need to be successfully completed in order to create a specification compliant part. Company X Inc contracts and manages each specialty manufacturer needed to produce a part. For example Company X will subcontract the casting to a foundry, the milling to a machine shop and the plating to a plating shop. Each individual subcontractor is not able to produce the complete part. Final assembly, marking and painting is also completed at our facility for some repair parts. Only through Company X coordination including on-site audits of special production requirements, i.e. QE-STD-1 for CSI parts, will a complete specification compliant part be produced by these small businesses.

Engineering:

The upfront engineering of each part under contract with the US Government takes place at Company X. This can include but is not limited to: developing a manufacturing plan, making the CAD model used to write the CNC code, updating drawings, creating new drawings and designing testing equipment for contractor first article and production testing.

Packaging, Measurement, Testing, Assembly, Marking and Cleaning\Lubricating:

Company X Inc is approved for all forms of MILSPEC packaging up to, but not including, a clean room. All parts supplied to the military by Company X are packaged in house including RFID tags. Final marking, painting, assembly and lubrication of parts are also done in house on certain jobs.

Quality Assurance/Inspection:

Company X Inc is ISO 9000:2008 certified to "Manufacture and repair of parts to the military." (A copy of this certification has been attached) We are compliant to ISO 10012:2003 for inspection. Company X Inc has a resident DCMA Quality Assurance Representative (QAR) who conducts all contractual source inspections at Company X' facility. Additionally, we are certified as the Prime to deliver Nuclear, Level 1 and Sub-Safe parts for the US Navy. The DCMA Nuclear QAR conducts his inspection at our facility as well.

Based on the fact that Company X is accountable for the manufacturing, quality, and performance of parts delivered to the US government, we request to be classified as the manufacturer for SAR process considerations.

Background Information:

Company X Inc is a key supplier to Lockheed Martin Corporation (LMC) on their Fleet Automotive Support Initiative-Global (FASI-G) contract (contract number XXXXXXXX out of DSCC). Lockheed Martin has come to Company X to reverse engineer and provide alternate sources for several items where the sole source is forcing the pricing above where LMC can effectively sustain supporting them.

Company X has successfully reverse engineered and supplied many automotive parts to TACOM and the Marine Corp over the past 5 years (often through DLA). We are very familiar with the requirements of military vehicles and the challenges associated with them. We are experienced at supplying specification compliant repair parts have been on contract directly with DLA for 3 of the past 4 years to provide reverse engineering and breakout services to DSCC and DSCR.

LMC provided Company X with sample assets from their inventory for reverse engineering. Company X reviewed the available unlimited rights data and technical manuals. We reviewed how the parts fit up in their application by going to our local Army National Guard base which has most wheeled army vehicles including the M1000, M984A1, M977 and M985. We used this information along with parametric data and material analysis data to create a new technical data package (located in Appendix B).

LMC will be managing this item for DSCC under their contract for up to the next 10 years and has bought the full data rights to the drawings. As a result we have added LMC onto the drawing as an approved source of supply. We ask that if you find this SAR package to be acceptable you catalogue both Company X (CAGE) and Lockheed Martin (CAGE 02769) as approved sources.

Company X engineering department is available and more than willing to discuss over the phone, e-mail or in person any questions or concerns you may have during the review of this SAR.

Respectfully Submitted,

Senior Engineer

Appendix A.i

Quality Documents

Attached in this appendix is Company X ISO 9001:2008 certification (3rd Party Audited) for the
“Manufacture and Repair of Parts for the Military.”

The ESA has already received a copy of our quality manual with other previously submitted SARs. Should the latest copy be required please contact Company X and we will be happy to e-mail it.

Certificate of Registration



global assurance

This Is to certify that ttle Quality Management System of:

Company X

applicable to:

Manufacture and repair of parts for the military

has been assessed and approved by
National Quality Assurance, U.S.A., against the provisions of:

ISO 9001:2008

For and on behalf
of NQA, USA, Acton, MA 01720

Certificate Number: 123

EACCode: XX

First Issued: November 6, 2003

Valid Until: October 2, 2012

Reissued: October 2, 2009



This approval is subject to the company maintaining its system to the required standard, which will be monitored by NQA, USA, an accredited organization under the ANSI-ASQ National Accreditation Board.

Appendix A.ii

Company Brochure

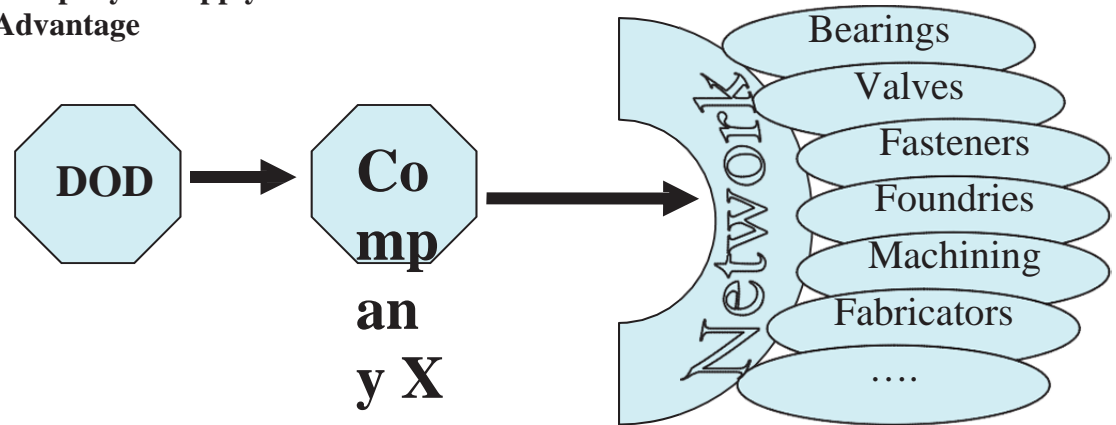
Included in this appendix is the company brochure for Company X Inc.



Baseline Business – DOD Repair Parts

Our baseline business is focused on winning competitively awarded repair part contracts with the Department of Defense. We concentrate on metal and plastic parts that are machined, fabricated, or cast with low to moderate annual volumes primarily associated with five year contracts. We take a government solicitation and turn it into a complete commercial package so that our partners can focus on what they do best, manufacturing parts.

Company X Supply Chain Advantage



Company X has small set of individually qualified manufacturing partners which we use to source production of parts. All of our manufacturing partners must adhere to strict quality requirements validated through regular on-site visits.

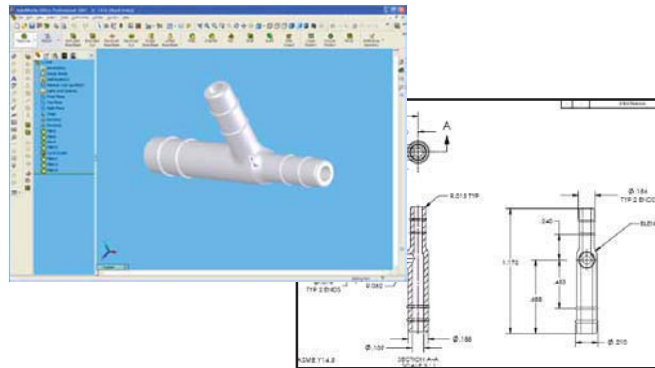
Company X Software Advantage

Company X has developed a complete set of in-house software which allows us to take the government EDI transactions and filter them to target the specific niche of each of our manufacturing partners. We can dynamically adapt our filters to match the current capabilities, appetite and capacity of each partner. This software also provides complete work flow management from solicitation to award to delivery.



Company X Engineering Advantage

A manufacturing engineer from our engineering team looks at every technical data package, creates a manufacturing process map, and then determines which partners are the best fit to produce it. All parts come with a “Master Record” which provides our partners with a quick look on everything needed to manufacture the part. Every part is assigned to a specific engineer who provides technical support throughout the manufacturing process.



Company X Inspection and Shipping Advantage

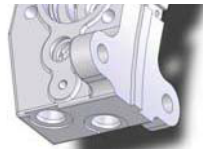
With an on-site DCMA QAR for source inspection and a complete packaging facility for all MILSPEC packaging up to, but not including, a clean-room, Company X manages all aspects of a government contract\delivery order.

Engineering Technical Services

Company X is at its heart an engineering firm with many resources to provide rapid manufacturing and logistics solutions to the US Government. Not only can we help once a problem part has been identified but Company X has developed software which allows us to work with the Defense Logistics Agency to help them identify potential problem parts before they become backorders.

Obsolete Parts Solutions

Instead of using surplus for a short term solution, we evaluate state-of-the-art engineering answers for obsolete parts and work to put in place a long term solution. Company X has a team of manufacturing engineers dedicated to supporting problem parts. Working closely with the Defense Logistics Agency and the In-Service Engineering Support Activities (TACOM, AMCOM, NAVSEA, NAVAIR, WR-ALC, TINKER etc.) we develop a complete sourcing solution. We not only reverse engineer and/or re-engineer parts but we also produce and provide the parts to the troops in the field and the sailors at sea.



x From *Complex Submarine Parts...*



o To *Army Critical Suspension Components...*



x To *Electro-Mechanical Assemblies...*

WE DELIVER RESULTS!!

Quality and Inspection Systems

Company X is registered ISO 9001:2000 and have been since the company's first year.

All parts that Company X manufactures are carefully inspected to ensure that they are 100% specification compliant. We have a large capacity of in-house mechanical inspection equipment and maintain an ISO 10012 compliant inspection system. Most government source inspections are done in house at Company X.



Our customers recognize our superior quality and have rewarded us:

- x 2004 Gold Medal, Best Value Supplier, by the Defense Supply Center Richmond
- x Class II and III Fastener Qualified Supplier by the Defense Supply Center Philadelphia
- x Verified Supplier Lists for: Nuclear, Level 1 and Sub-Safe repair parts for the US Navy
- x Company X maintains a 100% quality rating by DLA's AVBS score

Appendix B

Qualification Part Drawings

Included in this appendix are the following drawings and first page of specifications required for production:

New Proposed TDP:

<u>CAGE</u>	<u>Drawing</u>	<u>Data Rights</u>
XXXXX	XXXXX-X	UNLIMITED

Supporting Specifications (only first page provided):

RR-W-410

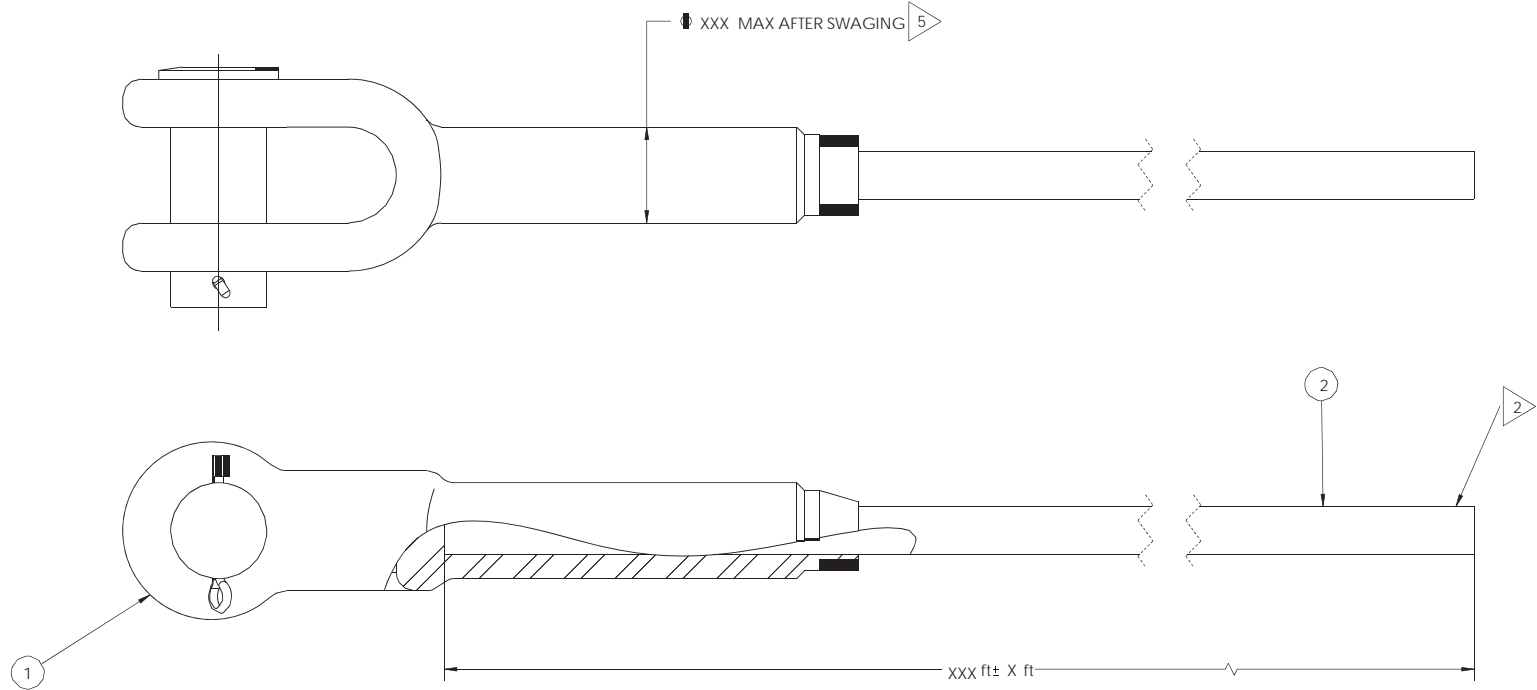
OEM Data (provided for reference):

<u>CAGE</u>	<u>Drawing</u>	<u>Data Rights</u>
45152	1307990 Rev B	Government owned with unlimited rights
45152	1308000 Rev C	Government owned with unlimited rights
45152	1308010-U Rev Basic	Government owned with unlimited rights

See Appendix M for more data on the TDP creation and test plans

APPROVED SOURCE(S) OF SUPPLY 4		
CAGE	PART NUMBER	NAME AND ADDRESS
	9230L4000	Company X INC
	9230L4000	LOCKHEED MARTIN CORP MOORESTOWN NJ

REVISIONS				
ZONE	REV.	DESCRIPTION	DATE	APPROVED
	A	TDP RELEASED	11/20/2009	N BIRD



Notes:

1: QUALIFICATION TESTING: TEST FIRST ASSEMBLY TO FAILURE TO ENSURE TOTAL STRENGTH EXCEEDS REQUIREMENT. REQUALIFICATION IS REQUIRED FOR ANY CHANGE IN MANUFACTURING PROCESS ASSEMBLY MANUFACTURER OR CHANGE IN SUBCOMPONENT MANUFACTURER.

2: SEIZE END OF ROPE NOT ATTACHED TO SOCKET

3: PREPARE FOR DELIVERY: WIND ONTO REEL WITH SEIZED END ON OUTSIDE OF COIL

4: ONLY THE ITEM AS DESCRIBED ON THIS DRAWING WHEN PROCURED FROM THE VENDORS LISTED HEREIN IS APPROVED.

5: 100% INSPECTION REQUIRED ON THIS DIMENSION. NOT APPLICABLE TO SPELTERED SOCKET OPTION.

6: ALTERNATE PART NUMBER (NOT SHOWN): XXX SWAGE STYLE OPEN STEEL SOCKET FOR USE WITH X" DIA WIRE ROPE XXX TON MINIMUM RATING

ITEM NO.	QTY.	CAGE	PART NUMBER	DESCRIPTION	MATERIAL
1	1	75535	S-501	SOCKET	SWAGE STYLE OPEN STEEL SOCKET FOR USE WITH XXX" DIA WIRE ROPE XXXX TON MINIMUM RATING
2	AR	XXX	XXXXX	WIRE ROPE	X" DIA EXTRA IMPROVED PLOW STEEL WIRE ROPE MIN BREAKING STRENGTH XXX TONS XXX SEALED ROPE IWRC CORE BRIGHT FINISH. TYPE I CLASS 3 CONSTRUCTION 6 PER RR-W-410

PROPRIETARY AND CONFIDENTIAL
THE INFORMATION CONTAINED IN THIS DRAWING IS THE SOLE PROPERTY OF LOCKHEED MARTIN CORPORATION. ANY REPRODUCTION IN PART OR AS A WHOLE WITHOUT THE WRITTEN PERMISSION OF LOCKHEED MARTIN CORPORATION IS PROHIBITED.

UNLESS OTHERWISE SPECIFIED DIMENSIONS ARE IN INCHES

ANGLES ± 2°

X ± .1 XX ± .03 XXX ± .010

INTERPRET DRAWING PER ASME Y14.5M - 1994

DRAWN	11/14/2009
CHKD	11/20/2009
APP'VD	
CONTRACT	
COMMENTS	

Company X INCORPORATED			
WIRE ROPE ASSY			
SIZE	CAGE CODE	DWG. NO.	REV
C			A

1301550-U M984
NEXT ASSY USED ON

FEDERAL SPECIFICATION

WIRE ROPE AND STRAND

The General Services Administration has authorized the use of this federal specification by all federal agencies.

1. SCOPE AND CLASSIFICATION

1.1 This specification covers wire ropes and wire seizing strands (see 6.1). **This specification does not include all types, classes, constructions, and sizes of wire rope and strand that are commercially available, but it is intended to cover the more common types, classes, constructions, and sizes that are suitable for federal government use.**

1.2 Classification.

1.2.1 Types, classes, constructions, and sizes. Wire ropes and wire seizing strands covered by this specification shall be of the following types, classes, constructions, and sizes as specified (see 6.2 (b)). For general rules for selection of wire rope and strand, see 6.3 and the Wire Rope Users Manual. For wire rope and strand definitions and tests, see 6.4 and the Wire Rope Users Manual.

Type I - General purpose wire ropes

Class I - 6 by 7

Class 2 - 6 by 19

Construction 1 6 by 19 (2 operations)

Construction 2 6 by 19 Warrington

Construction 3 6 by 19 Seale

Construction 4 6 by 19 Filler wire

Construction 5 6 by 19 Warrington-Seale

that would improve this document should be sent to: STDZNMGT@ida.mil or Defense Supply Center Richmond, ATIN: DSCR-VEB, 8000 Jefferson Davis Highway, Richmond, VA 23297-5616.

AMSC N/A

FSC4010

4 | 3 J rb." 130799o r' II | I

CAGE	SUGGESTED SOURCE(S) OF SUPPLY	ZONE TR	DESCRIPTION	DATE APPROVED
75535	CROSBY GROUP INC	A4 A	ADDEO NOTE 3	ECN 2620 JJG 2-27-84

**OEM DRAWINGS INSERTED
HERE (IF APPLICABLE)**

8 NOTE

1. "IDENTIFY SOURCE(S) BE CONSTANT OR CONTINUOUS OF SUPPLY"

2. SEE OSHA DRAWING TECHNICAL

3. "ONLY THE WHEN PROVIDED HEREON BY CORPORATION TO THE CUSTOMER SUB COMMITTEE PRIOR NOTIFICATION TO AND APPROVAL FROM NEXT ASSY USED ON

RATION
DUTY
A

001000521DVI 501000

Appendix C Qualification Part Detailed Manufacturing Plan

Included in this appendix is the detailed manufacturing plan(s) which identify all processes and materials as well as which steps will be performed by subcontractors. A detailed list of subcontractors is provided in appendix F.

Company X Inc -
CAGE:

Subcontractor:
YYYY
CAGE:

WIRE ROPE ASSEMBLY
P/N
Job No: _____
Quantity: _____
HEAT NUMBER: _____

Original Date:	11/23/2009
P.O.:	
MP Rev:	A
MP Rev Date:	11/23/2009

Manufacturing Plan

Drawing ID: XXX Rev A

Complete to Print

Op No	Resource	Operation Description	Date	Qty:	Rej:	Person:
5 Purchasing	CAGE: None	XXX EIPS xxxx IWRC WIRE ROPE TYPE I, CLASS 3, CONSTRUCTION 6 PER RR-W-410 MIN Breaking strength 45 tons CERTIFICATIONS REQUIRED				
6 Purchasing	CAGE:	Open Socket for X-inch wire rope Swage style (S-501) or YYY style (S-416) Minimum 45 ton rating CERTIFICATIONS REQUIRED				
10 Fabricate	Wire Cutter	Cut 1" Domestic Wire Rope to 150 ± 1 ft				
20 Assemble	National Four Post Swaging Machine	Swage socket to wire rope				
30 Inspection	QC Dept	Inspect sockets after assembly for after-swage diameter (1.80 inches max) & record results for each assembly. Supply results w/ each shipment				
40 Testing	QC Dept	Test First Article to failure & record break strength (>45 Tons). Supply results w/ first shipment. Repeat test if any change in manufacturing process or socket type switch.				
50 Preperation for Delivery	Packaging Dept	Wrap assembly onto a suitable reel with the socket end on the inside. Seize & staple opposite end to reel.				

Appendix D

Master Tooling Certification

The nature of these parts requires no master tooling and therefore no master tooling certification is required.

Appendix E - Data Certification

TECHNICAL DATA RIGHTS CERTIFICATION LETTER

I am an officer and employee of the above name legal entity with the responsibility for investigating the facts upon which this certification is made.

To the best of my knowledge and information obtained from my recent investigation:

a. I believe and certify that the technical data submitted to the Defense Supply Center Columbus as a part of my company's request for approval as potential source for the purpose of obtaining a contract were obtained by legal means by my company, without breach of any contractual or confidential relations pertaining to said technical data by my company, its current or recent employees; and

b. I believe and certify that my company, its current or recent employees did not obtain or receive any technical data marked with a company's proprietary rights legend or a Government limited rights legend from any U.S. Government's agency or employee or other third parties that were used in the preparation of or were incorporated into the request for approval or its supporting technical data other than as described herein; and

c. I certify that my company has the legal right to use said technical data to manufacture the below identified part for the United States Government. To the extent that said technical data are marked with a company's proprietary rights or a Government limited rights legend or are otherwise believed to be or have in the past been the proprietary data of another company, the following documents which are attached hereto and made a part of the certification have formed the basis for claiming legal right to use said technical data.

THIS CERTIFICATION CONCERNS A MATTER WITHIN THE JURISDICTION OF AN AGENCY OF THE UNITED STATES AND THE MAKING OF A FALSE, FICTITIOUS, OR FRAUDULENT CERTIFICATION MAY RENDER THE MAKER SUBJECT TO PROSECUTION UNDER THE TITLE 18, UNITED STATES CODE, SECTION 1001.

THIS CERTIFICATION APPLIES TO:
NSN 1640-01-281-5201 *PIN*

President/CEO Signature block

Appendix F

Qualification Part Sub-Contractor List

P/N 00 – Fabrication and Testing

CAGE:

Phone –

Fax –

P/N 16 – Socket

CAGE:

Phone –

Fax –

P/N 00 – Wire Rope

CAGE: None

Phone –

Appendix M - Test Plans

Discussion of the TDP:

The TDP was created using samples provided by LMC from the inventory they are using to support this part for the contracting effort. The design proposed by Company X is an exact form fit & function equivalent to the current design. In addition to the two unused samples of the current design and we reviewed a copy of the current drawing package for creation of this new TDP. The socket is being procured from the same manufacturer of the OEM. The wire is being procured in accordance with the federal specification RR-W-410 which the current wire from Wire Co (parent company of YYY) also meets.

Swage vs Spelter Socket:

The Company X design features the swaged YYY socket (01) with the speltered socket (6) as an optional substitute. Both sockets are made in the USA by YYY Group and meet the dimensional requirements of the original design. The current TDP shows the same speltered option (drawing YYY) with the open swage socket listed as an alternate. Company X featured the swaged option as the primary socket since we wanted to feature the after swage measurement to ensure the swaging is done correctly if that option was chosen.

Suggested Test Plans:

A destructive test on the first assembly will be performed to ensure the strength requirements are met or exceeded (drawing YYY note 1). This destructive test will be re-done any time there is a change in manufacturing process or component supplier. Additionally the after swaged dimension will be checked on 100% of swaged assemblies per note 5 (see the IMS in appendix P). Due to the fact that we are using the same materials as the current product and these tests will ensure that the military is getting a product that meets or exceeds the current assembly we would suggest that no additional testing be required.

Appendix N

Licensee Agreement

There is no license agreement between Company X and the OEM and so this section is not applicable.

Appendix P

Inspection Method Sheets

Attached are the inspection method sheets for the part we are seeking source approval for. In all cases we sample with an AQL=0.

Appendix Q

Engine Part Special Requirements

These parts are not part of an engine assembly and therefore this section does not apply.

Appendix R

Technical Briefing

Upon request of DSCC or any of the Engineering Support Activities, Company X Inc will be happy to provide a technical briefing.

Appendix S

Sample Part

Sample parts have been manufactured and are available should the ESA like to review them. Please note that the sample parts only contain 5 feet of cable in lieu of the required 150 feet as the connection is the only critical portion.

Appendix T

Value Added

There is no additional data essential to the manufacturing of these items that were not already presented in earlier sections of this source approval request.