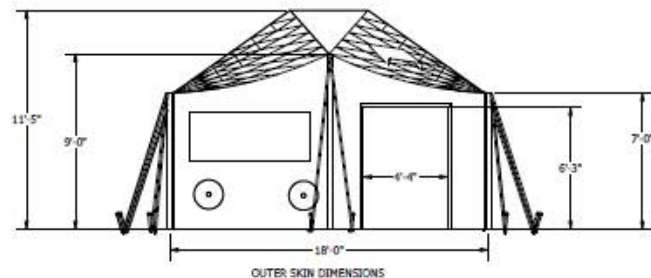
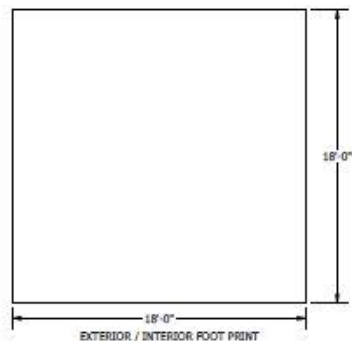
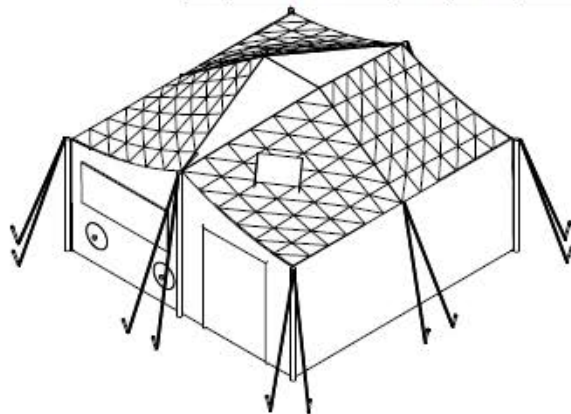


Notes:

1. Do not scale drawing
2. Cad generated drawing do not manually update
3. Units shown are inches [mm]



Contains:
2 Doors
4 ECU holes
2 Windows
2 Stove Pipe Vents





CONTROLLED DOCUMENT

This is an electronic copy obtained from the RDS server. Please be certain that this copy is the latest version.

[illegible]

A large, olive-green military-style tent is pitched on a grassy field. The tent has a peaked roof and is secured with numerous white stakes. The background features trees with autumn foliage in shades of yellow and orange, under a clear blue sky.

MANUFACTURER Rapid Deployable Systems LLC		CAGE CODE 9J9Q9	
TITLE Modular General Purpose Tent System 			
PART NUMBER 2480430			
APPROVED BY 			DATE
SIZE N/A	SCALE N/A	WEIGHT N/A	PAGE 1 OF 3

DRAWING PAGE 1 IS A NON-DETAILED SKETCH OR PHOTO THAT IS USED ALONG WITH PAGES 2 AND 3 PRODUCT DATA SHEETS, APPENDIX A, REVISION D TO BE USED TO COMPARE SHELTER SYSTEM AND SUPPORT COMPONENTS FOR PROCEEDING BY US MILITARY USERS. THE DOCUMENT WILL BE POSTED FOR REVIEW ON THE DLA MIL WEBSITE.

DISTRIBUTION STATEMENT:
DISTRIBUTION FOR THIS DOCUMENT
SPECIFICATION AND GRAPHIC ARE
AUTHORIZED FOR PUBLIC RELEASE



FEDMALL 

CLICK HERE TO ORDER THIS ITEM IN FEDMALL

LOG ON TO FEDMALL IN A 2nd TAB FIRST

**DISTRIBUTION STATEMENT:
DISTRIBUTION FOR THIS DOCUMENT,
SPECIFICATION AND GRAPHICS ARE
AUTHORIZED FOR PUBLIC RELEASE**

Contractor Name:				CAGE CODE:			
1.PART NUMBER:			2.NSN				
3.NAME:			4.TYPE:		5.CLASS:		
6.COLOR:		7. Support System:			8.SERIES:		
9. INTENDED USE:							
10.DIMENSIONS (IN FEET AND INCHES)		LENGTH: Feet Inches		WIDTH: Feet Inches		HEIGHT Feet Inches RIDGE: EAVE:	
11.DIMENSIONS (EXTERNAL GUYED)		LENGTH Feet Inches		WIDTH Feet Inches			
12.SQUARE FEET INTERIOR:							
13.WEIGHT (POUNDS, UNPACKAGED) LBS.				14.WEIGHT (PACKAGED) LBS		15.SHIPPING CUBE (PACKAGED) CU.	
16. SHIPPING CONTAINER		LENGTH Inches		WIDTH Inches		HEIGHT Inches	
17.SET-UP TIME/ NUMBER OF PERSONS People TIME UNDER CANOPY Minutes Minutes				18.STRIKE TIME/ NUMBER OF PERSONS People Minutes			
19.SNOW LOAD: Design Tested				20.Wind Load: Design Tested			
21.PARTS INCLUDED (Include Quantity):							
22.DESCRPTION:							
23. ACCESSORY AND SUPPORT EQUIPMENT:		PART NUMBER Or NSN		Check if Included		DESCRIPTION	

LIGHT SET Product Data Sheet			
ELECTRICAL OUTLET SET Product Data Sheet			
FLOORING Product Data Sheet			
HEATER Product Data Sheet			
AIR CONDITIONER Product Data Sheet			
GENERATOR Product Data Sheet			
POWER DISTRIBUTION Product Data Sheet			
TRAILER MOUNTED SUPPORT SYSTEM Product Data Sheet			

INSULATED LINER Product Data Sheet			
INSULATED FLOORING Product Data Sheet			
SOLAR SHADE/ CAMOU. NETT Product Data Sheet			



RELEASE DESCRIPTION	7/15/2016 10/10/17	
	7/15/2016	10/10/17
INTL OF FIVE TO BANGKOK	10	10/10/17
PROSECUTION CHARGING RECORD	10	10/10/17
FOURTH FIVE TO BANGKOK	10	10/10/17
PROSEC. IN 11/14 - 12/10/16 FOR FIVE TO BANGKOK	10	10/10/17
RECEIVED IN 11/14 - 12/10/16	10	10/10/17
CHARGE CONTROL RECORD, PROSEC. IN 11/14	10	10/10/17
MOBILE PHONE RECORD, PROSEC. IN 11/14	10	10/10/17

NOTES:

1. FOR ASSEMBLY REFERENCE TO TECHNET LIGHTING ASSEMBLY PROCEDURE BOOK PC 2019 PERMITTED
2. ALUMINUM PINS (6-8MM) FLAT TOP (1) PER SIDE
3. ENSURE NO PETTING GETS INTO (DUST DURING FILLING PROCESS, OR SPILLS ONTO EXPOSED SURFACES OF THE TIGHT ASSEMBLY.
4. FUNCTIONS TEST TO VERIFY ALL WORK MEASURES AND OTHER FUNCTIONAL INFORMATION
5. SEE BOND IDENTIFICATION LABEL FOR WIRE COLOR IDENTIFICATION

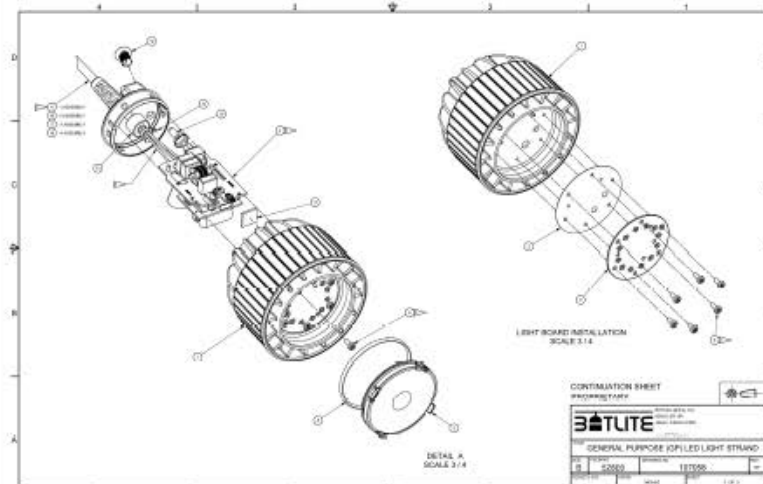
WIRE IDENTIFICATION TABLE	
COLOR	SIGNAL
BLUE	SSDA
ORANGE	LINE
RED	NC/UTM
RED	AVC CONNECT


ASSY. NO. 107058-4
ASSY. NO. 107058-3
ASSY. NO. 107058-2
ASSY. NO. 107058-1
SEE ASSOCIATED PARTS LIST
PROPRIETARY

THIS DATA IS THE SOLE PROPERTY OF TRIMARK LIGHTING AND SHALL NOT BE LOANED, REPRODUCED, COPIED, OR IN ANY MANNER BE MADE OR BEING MADE WITHOUT WRITTEN PERMISSION FROM TRIMARK LIGHTING. ANY REPRODUCTION OF THIS TECHNICAL DATA OR PORTION THEREOF WITHOUT WRITTEN PERMISSION MAY ALSO CONSTITUTE THE VIOLATION OF THE PATENT RIGHTS OF TRIMARK LIGHTING.		TRIMARK 12000 10/1/11		TECHNICAL DATA INSTRUCTIONS: 1. 100W 2. 100W 3. 100W 4. 100W 5. 100W 6. 100W 7. 100W 8. 100W 9. 100W 10. 100W 11. 100W 12. 100W 13. 100W 14. 100W 15. 100W 16. 100W 17. 100W 18. 100W 19. 100W 20. 100W 21. 100W 22. 100W 23. 100W 24. 100W 25. 100W 26. 100W 27. 100W 28. 100W 29. 100W 30. 100W 31. 100W 32. 100W 33. 100W 34. 100W 35. 100W 36. 100W 37. 100W 38. 100W 39. 100W 40. 100W 41. 100W 42. 100W 43. 100W 44. 100W 45. 100W 46. 100W 47. 100W 48. 100W 49. 100W 50. 100W 51. 100W 52. 100W 53. 100W 54. 100W 55. 100W 56. 100W 57. 100W 58. 100W 59. 100W 60. 100W 61. 100W 62. 100W 63. 100W 64. 100W 65. 100W 66. 100W 67. 100W 68. 100W 69. 100W 70. 100W 71. 100W 72. 100W 73. 100W 74. 100W 75. 100W 76. 100W 77. 100W 78. 100W 79. 100W 80. 100W 81. 100W 82. 100W 83. 100W 84. 100W 85. 100W 86. 100W 87. 100W 88. 100W 89. 100W 90. 100W 91. 100W 92. 100W 93. 100W 94. 100W 95. 100W 96. 100W 97. 100W 98. 100W 99. 100W 100. 100W		3A TUTE 888.747.7474 10000 10/1/11		TRIMARK LIGHTING LLC 888.747.7474 10000 10/1/11	
PATENT PENDING		GENERAL PURPOSE (GP) LED LIGHT STRAND		528E6		107058		REV 00	

DRAWING PAGE 1 IS A NON-DETAILED SKETCH OR PHOTO THAT IS USED ALONG WITH PAGES 2 AND 3 PRODUCT DATA SHEETS, APPENDIX A, REVISION D TO BE USED TO COMPLETE SHIELD SYSTEMS AND SUPPORT COMPONENTS FOR PROCUREMENT BY US MILITARY USERS. THE DOCUMENTS WILL BE POSTED FOR REVIEW ON THE DLAALV WEBSITE.

DISTRIBUTION STATEMENT:
DISTRIBUTION FOR THIS DOCUMENT,
SPECIFICATION AND GRAPHIC ARE
AUTHORIZED FOR PUBLIC RELEASE.



MANUFACTURER Rapid Deployable Systems, LLC		CAGE CODE 9J9Q9	
TITLE Light Set, Tent			
PART NUMBER 2480474			
APPROVED BY 			DATE
SIZE N/A	SCALE N/A	WEIGHT N/A	PAGE 1 OF 2

APPENDIX A Revision D Company / Cage Code Manufacturing Source Company Part Number / NSN	LIGHT SET, TENT PRODUCT DATA SHEET	
Specifications as applicable		
Bulb Type		
EMI Protected Light		
Power Consumption (Watts)		
Illumination (Unfiltered) fc @ 18"		
Illumination (Blackout) fc @ 35"		
Length of Light (inches)		
Length Including Cord (inches)		
Weight (Unpackaged) (lb)		
Compliant to MIL-PRF-44259F		
Stringable total amount to a single line		
Special/Additional Features:		