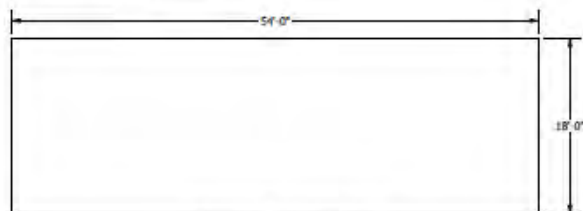


9J9Q9

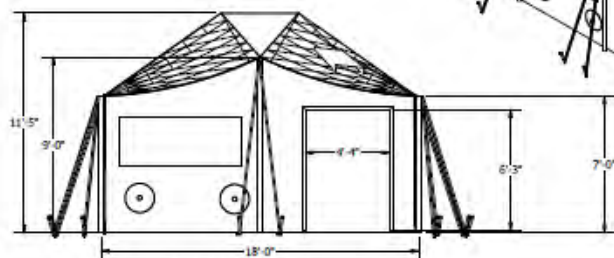
- Notes:
1. Do not scale drawing
 2. Cad generated drawing do not manually update
 3. Units shown are inches (mm)

82100693

REVISION HISTORY				
REV	DESCRIPTION	DATE	APPROVED	RCN
IR	Initial Release	5/3/2024	TSN	

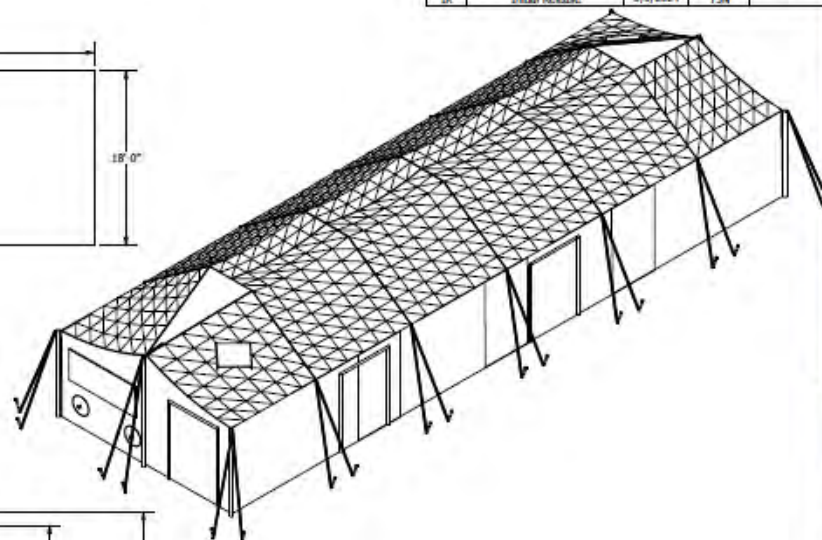


EXTERIOR / INTERIOR FOOT PRINT



OUTER SKIN DIMENSIONS

- Contains:
- 4 Doors
 - 4 ECU holes
 - 2 Windows
 - 6 Stove Pipe Vents



CONTROLLED DOCUMENT

This is an electronic copy obtained from the RDS server. Please be certain that this copy is the latest revision.

		Rapid Deployable Systems 4000 S. 1st St. Fort Worth, TX 76101 Phone: (817) 576-1000	
MGPTS Large Interior / Exterior Dimensions			
REV	DATE	REV	DATE
8	5/3/2024		
PART NO: 82100693		SHEET: 0F 1	

DRIVING PAGE 1 IS A MORE DETAILED SKETCH OF THE PHOTO THAT IS USED ALONG WITH PAGES 2 AND 3. PRODUCT DATA SHEETS APPROPRIATE A REVISION 0 TO BE USED TO COMPARE SHEET DIMENSIONS AND SUPPORT COMPONENTS FOR PROCEEDING BY US. MUST ANY USERS. THE DOCUMENT SHALL BE POSTED FOR REVIEW ON THE DLA MILWESGFE.

DISTRIBUTION STATEMENT:
DISTRIBUTION FOR THIS DOCUMENT,
SPECIFICATION AND GRAPHIC ARE
AUTHORIZED FOR PUBLIC RELEASE.



MANUFACTURER	CAGE CODE
Rapid Deployable Systems LLC	9J9Q9

TITLE Modular General Purpose Tent System

PART NUMBER
2480432

APPROVED BY: [Signature] DATE

SIZE N/A	SCALE N/A	WEIGHT N/A	PAGE 1 OF 3
----------	-----------	------------	-------------

ITAR CATEGORY N/A

NON-SENSITIVE



FEDMALL 

CLICK HERE TO ORDER THIS ITEM IN FEDMALL

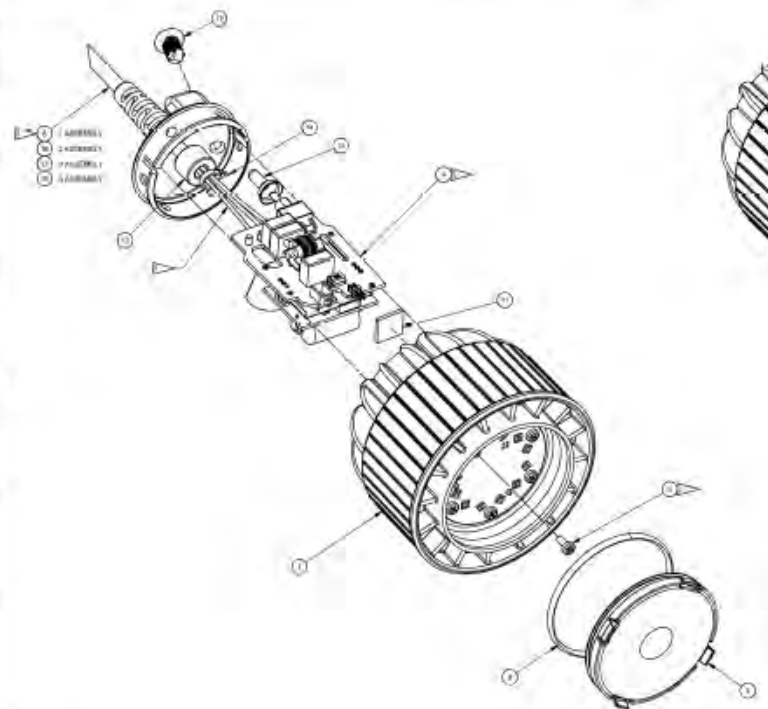
LOG ON TO FEDMALL IN A 2nd TAB FIRST

**DISTRIBUTION STATEMENT:
DISTRIBUTION FOR THIS DOCUMENT,
SPECIFICATION AND GRAPHICS ARE
AUTHORIZED FOR PUBLIC RELEASE**

Contractor Name:				CAGE CODE:			
1.PART NUMBER:			2.NSN				
3.NAME:			4.TYPE:		5.CLASS:		
6.COLOR:		7. Support System:			8.SERIES:		
9. INTENDED USE:							
10.DIMENSIONS (IN FEET AND INCHES)		LENGTH: Feet Inches		WIDTH: Feet Inches		HEIGHT Feet Inches RIDGE: EAVE:	
11.DIMENSIONS (EXTERNAL GUYED)		LENGTH Feet Inches		WIDTH Feet Inches			
12.SQUARE FEET INTERIOR:							
13.WEIGHT (POUNDS, UNPACKAGED) LBS.				14.WEIGHT (PACKAGED) LBS		15.SHIPPING CUBE (PACKAGED) CU.	
16. SHIPPING CONTAINER		LENGTH Inches		WIDTH Inches		HEIGHT Inches	
17.SET-UP TIME/ NUMBER OF PERSONS People TIME UNDER CANOPY Minutes Minutes				18.STRIKE TIME/ NUMBER OF PERSONS People Minutes			
19.SNOW LOAD: Design Tested				20.Wind Load: Design Tested			
21.PARTS INCLUDED (Include Quantity):							
22.DESCRPTION:							
23. ACCESSORY AND SUPPORT EQUIPMENT:		PART NUMBER Or NSN		Check if Included		DESCRIPTION	

LIGHT SET Product Data Sheet			
ELECTRICAL OUTLET SET Product Data Sheet			
FLOORING Product Data Sheet			
HEATER Product Data Sheet			
AIR CONDITIONER Product Data Sheet			
GENERATOR Product Data Sheet			
POWER DISTRIBUTION Product Data Sheet			
TRAILER MOUNTED SUPPORT SYSTEM Product Data Sheet			

INSULATED LINER Product Data Sheet			
INSULATED FLOORING Product Data Sheet			
SOLAR SHADE/ CAMOU. NETT Product Data Sheet			



LIGHT BOARD INSTALLATION
SCALE 3 / 4

DETAIL A
SCALE 3 / 4

CONTINUATION SHEET
PROPRIETARY

BATLITE		BATLITE LIGHTING, LLC PO BOX 1000 FORT MONROE, VA 22034 www.batlite.com	
GENERAL PURPOSE (GP) LED LIGHT STRAND			
REV	DESCRIPTION	DATE	BY
B	528E6	107058	
DATE	DATE	SCALE	REV

DRAWING PAGE 1 IS A NON-RELEASED SKETCH OR PHOTO THAT IS USED ALONG WITH FIGURES AND 3D PRODUCT DATA SHEETS, APPROXIMATE DIMENSIONS TO BE USED TO COMPARISON SHIELD OR SYSTEMS AND SUPPORT. COMPARISON IS FOR PROCEEDING BY US MAJORLY USCS. THE DOCUMENTS WILL BE POSTED FOR REVIEW ON THE DECLASS WEBSITE.

DISTRIBUTION STATEMENT:
DISTRIBUTION FOR THIS DOCUMENT,
SPECIFICATION AND GRAPHIC ARE
AUTHORIZED FOR PUBLIC RELEASE.



BATLITE	
GENERAL PURPOSE (GP) LED LIGHT STRAND	
REV	DESCRIPTION
B	528E6
DATE	DATE

MANUFACTURER Rapid Deployable Systems, LLC		CAGE CODE 9J9Q9
TITLE Light Set, Tent		
PART NUMBER 2480478 / 2480474		
APPROVED BY		DATE
SIZE N/A	SCALE N/A	WEIGHT N/A
PAGE 1 OF 2		

APPENDIX A Revision D Company / Cage Code Manufacturing Source Company Part Number / NSN	LIGHT SET, TENT PRODUCT DATA SHEET	
Specifications as applicable		
Bulb Type		
EMI Protected Light		
Power Consumption (Watts)		
Illumination (Unfiltered) fc @ 18"		
Illumination (Blackout) fc @ 35"		
Length of Light (inches)		
Length Including Cord (inches)		
Weight (Unpackaged) (lb)		
Compliant to MIL-PRF-44259F		
Stringable total amount to a single line		
Special/Additional Features: 		