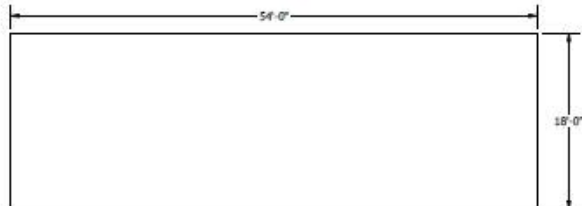


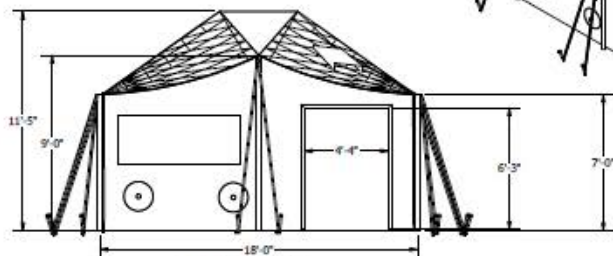
9J9Q9

- Notes:**
1. Do not scale drawing
 2. Cad generated drawing do not manually update
 3. Units shown are inches (mm)

REVISION HISTORY				
REV	DESCRIPTION	DATE	APPROVED	RCN
IR	Initial Release	5/9/2024	TSN	

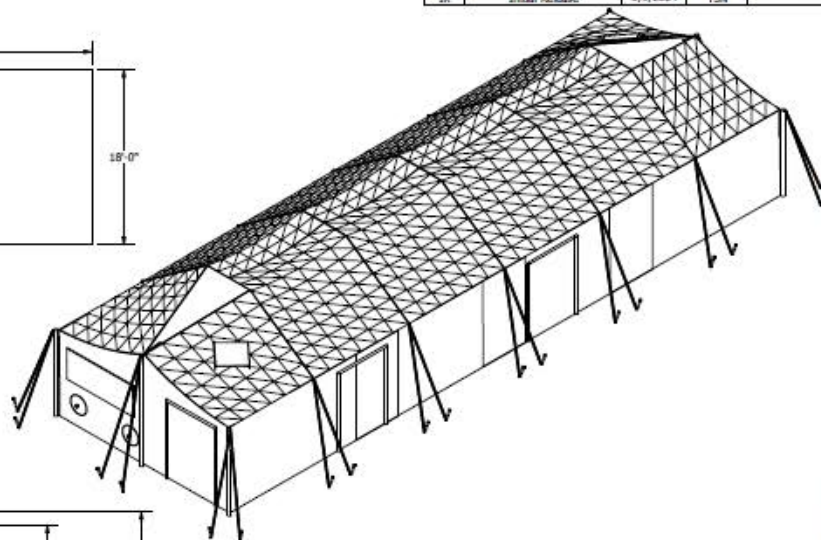


EXTERIOR / INTERIOR FOOT PRINT



OUTER SKIN DIMENSIONS

- Contains:
- 4 Doors
 - 4 ECU holes
 - 2 Windows
 - 6 Stove Pipe Vents



CONTROLLED DOCUMENT
This is an electronic copy obtained from the RDS server. Please be certain that this copy is the latest version.

		Rapid Deployable Systems 800 Pacific Road Arlington, VA 22204-4000 Phone: (800) 224-1000	
MGPTS Large Interior / Exterior Dimensions			
DRAWN BY: [blank] CHECKED BY: [blank] DESIGNED BY: [blank] PART NUMBER: 82100693 DATE: 5/9/2024	TITLE: MGPTS Large Interior / Exterior Dimensions SIZE: B CAGE CODE: 82100693 PART NO: 82100693 SHEET: 1 OF 1	RDS IR	



MANUFACTURER Rapid Deployable Systems LLC			CAGE CODE 9J9Q9
TITLE Modular General Purpose Tent System			
PART NUMBER 2480436			
APPROVED BY: [Signature]			DATE
SIZE N/A	SCALE N/A	WEIGHT N/A	PAGE 1 OF 3

DRAWING PAGE 1 IS A NON-DETAILED SKETCH OR PHOTO THAT IS USED ALONG WITH PAGES 2 AND 3 PRODUCT DATA SHEETS, APPENDIX A, REVISION D TO BE USED TO COMPARRE SHELTER SYSTEMS AND SUPPORT COMPONENTS FOR PRODUCTION BY US MILITARY USERS. THE DOCUMENT SHALL BE POSTED FOR REVIEW ON THE RDS WEBSITE.

DISTRIBUTION STATEMENT:
DISTRIBUTION FOR THIS DOCUMENT,
SPECIFICATION AND GRAPHIC ARE
AUTHORIZED FOR PUBLIC RELEASE.



FEDMALL 

CLICK HERE TO ORDER THIS ITEM IN FEDMALL

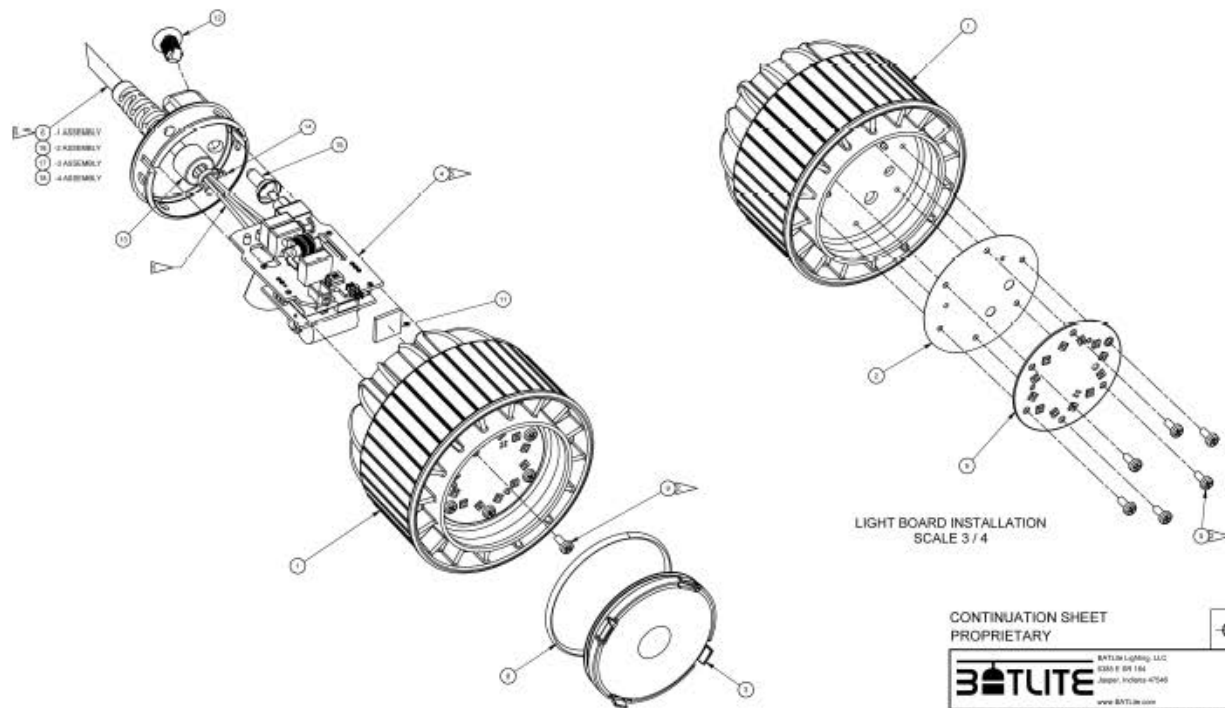
LOG ON TO FEDMALL IN A 2nd TAB FIRST

**DISTRIBUTION STATEMENT:
DISTRIBUTION FOR THIS DOCUMENT,
SPECIFICATION AND GRAPHICS ARE
AUTHORIZED FOR PUBLIC RELEASE**

Contractor Name:				CAGE CODE:			
1.PART NUMBER:			2.NSN				
3.NAME:			4.TYPE:		5.CLASS:		
6.COLOR:		7. Support System:			8.SERIES:		
9. INTENDED USE:							
10.DIMENSIONS (IN FEET AND INCHES)		LENGTH: Feet Inches		WIDTH: Feet Inches		HEIGHT Feet Inches RIDGE: EAVE:	
11.DIMENSIONS (EXTERNAL GUYED)		LENGTH Feet Inches		WIDTH Feet Inches			
12.SQUARE FEET INTERIOR:							
13.WEIGHT (POUNDS, UNPACKAGED) LBS.				14.WEIGHT (PACKAGED) LBS		15.SHIPPING CUBE (PACKAGED) CU.	
16. SHIPPING CONTAINER		LENGTH Inches		WIDTH Inches		HEIGHT Inches	
17.SET-UP TIME/ NUMBER OF PERSONS People TIME UNDER CANOPY Minutes Minutes				18.STRIKE TIME/ NUMBER OF PERSONS People Minutes			
19.SNOW LOAD: Design Tested				20.Wind Load: Design Tested			
21.PARTS INCLUDED (Include Quantity):							
22.DESCRPTION:							
23. ACCESSORY AND SUPPORT EQUIPMENT:		PART NUMBER Or NSN		Check if Included		DESCRIPTION	

LIGHT SET Product Data Sheet			
ELECTRICAL OUTLET SET Product Data Sheet			
FLOORING Product Data Sheet			
HEATER Product Data Sheet			
AIR CONDITIONER Product Data Sheet			
GENERATOR Product Data Sheet			
POWER DISTRIBUTION Product Data Sheet			
TRAILER MOUNTED SUPPORT SYSTEM Product Data Sheet			

INSULATED LINER Product Data Sheet			
INSULATED FLOORING Product Data Sheet			
SOLAR SHADE/ CAMOU. NETT Product Data Sheet			



LIGHT BOARD INSTALLATION
SCALE 3 / 4

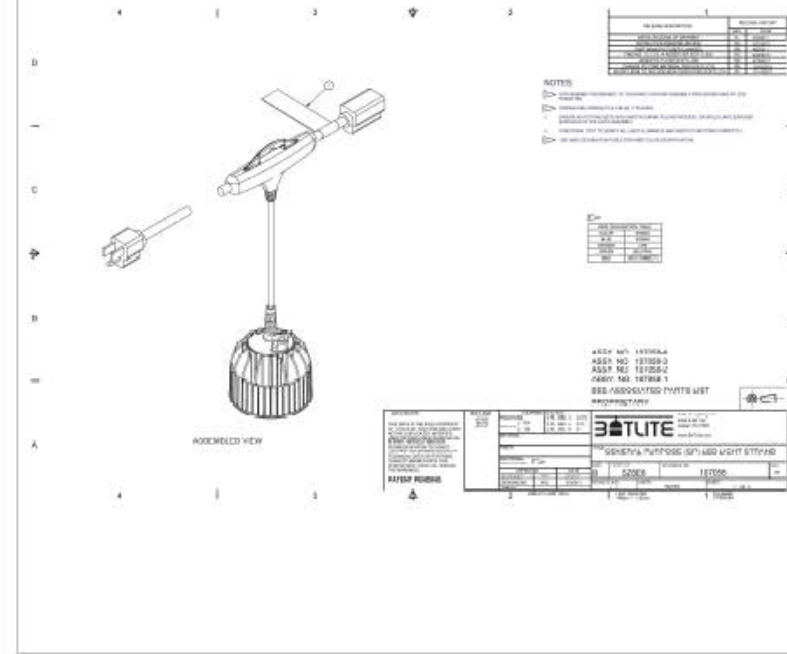
DETAIL A
SCALE 3 / 4

CONTINUATION SHEET
PROPRIETARY

BATLITE		BATLITE Lighting, LLC 1000 E. 10th St. Tulsa, Oklahoma 74103 www.batlite.com	
TITLE: GENERAL PURPOSE (GP) LED LIGHT STRAND			
REV: B	ISSN: 528E6	DRAWING NO: 107058	REV: 00
SCALE: 1/4"	UNIT: INCHES	SHEET: 3 OF 3	

DRAWING PAGE 1 IS A NON-DETAILED SKETCH OR PHOTO THAT IS USED ALONG WITH PAGES 2 AND 3 PRODUCT DATA SHEETS, APPENDIX A, REVISION D TO BE USED TO COMPILE SHIELD SYSTEMS AND SUPPORT COMPONENTS FOR PROCUREMENT BY US MILITARY USERS. THE DOCUMENTS WILL BE POSTED FOR REVIEW ON THE DLA MILVIEBSITE.

DISTRIBUTION STATEMENT:
DISTRIBUTION FOR THIS DOCUMENT,
SPECIFICATION AND GRAPHIC ARE
AUTHORIZED FOR PUBLIC RELEASE.



ASSEMBLED VIEW

NOTES:
1. DRAWING IS A NON-DETAILED SKETCH OR PHOTO THAT IS USED ALONG WITH PAGES 2 AND 3 PRODUCT DATA SHEETS, APPENDIX A, REVISION D TO BE USED TO COMPILE SHIELD SYSTEMS AND SUPPORT COMPONENTS FOR PROCUREMENT BY US MILITARY USERS. THE DOCUMENTS WILL BE POSTED FOR REVIEW ON THE DLA MILVIEBSITE.

REV	DATE	DESCRIPTION
00		

KEY: N/A: 107058-1
KEY: N/A: 107058-2
KEY: N/A: 107058-3
KEY: N/A: 107058-4
KEY: N/A: 107058-5
KEY: N/A: 107058-6
KEY: N/A: 107058-7
KEY: N/A: 107058-8
KEY: N/A: 107058-9
KEY: N/A: 107058-10
KEY: N/A: 107058-11
KEY: N/A: 107058-12
KEY: N/A: 107058-13
KEY: N/A: 107058-14
KEY: N/A: 107058-15
KEY: N/A: 107058-16
KEY: N/A: 107058-17
KEY: N/A: 107058-18
KEY: N/A: 107058-19
KEY: N/A: 107058-20
KEY: N/A: 107058-21
KEY: N/A: 107058-22
KEY: N/A: 107058-23
KEY: N/A: 107058-24
KEY: N/A: 107058-25
KEY: N/A: 107058-26
KEY: N/A: 107058-27
KEY: N/A: 107058-28
KEY: N/A: 107058-29
KEY: N/A: 107058-30
KEY: N/A: 107058-31
KEY: N/A: 107058-32
KEY: N/A: 107058-33
KEY: N/A: 107058-34
KEY: N/A: 107058-35
KEY: N/A: 107058-36
KEY: N/A: 107058-37
KEY: N/A: 107058-38
KEY: N/A: 107058-39
KEY: N/A: 107058-40
KEY: N/A: 107058-41
KEY: N/A: 107058-42
KEY: N/A: 107058-43
KEY: N/A: 107058-44
KEY: N/A: 107058-45
KEY: N/A: 107058-46
KEY: N/A: 107058-47
KEY: N/A: 107058-48
KEY: N/A: 107058-49
KEY: N/A: 107058-50
KEY: N/A: 107058-51
KEY: N/A: 107058-52
KEY: N/A: 107058-53
KEY: N/A: 107058-54
KEY: N/A: 107058-55
KEY: N/A: 107058-56
KEY: N/A: 107058-57
KEY: N/A: 107058-58
KEY: N/A: 107058-59
KEY: N/A: 107058-60
KEY: N/A: 107058-61
KEY: N/A: 107058-62
KEY: N/A: 107058-63
KEY: N/A: 107058-64
KEY: N/A: 107058-65
KEY: N/A: 107058-66
KEY: N/A: 107058-67
KEY: N/A: 107058-68
KEY: N/A: 107058-69
KEY: N/A: 107058-70
KEY: N/A: 107058-71
KEY: N/A: 107058-72
KEY: N/A: 107058-73
KEY: N/A: 107058-74
KEY: N/A: 107058-75
KEY: N/A: 107058-76
KEY: N/A: 107058-77
KEY: N/A: 107058-78
KEY: N/A: 107058-79
KEY: N/A: 107058-80
KEY: N/A: 107058-81
KEY: N/A: 107058-82
KEY: N/A: 107058-83
KEY: N/A: 107058-84
KEY: N/A: 107058-85
KEY: N/A: 107058-86
KEY: N/A: 107058-87
KEY: N/A: 107058-88
KEY: N/A: 107058-89
KEY: N/A: 107058-90
KEY: N/A: 107058-91
KEY: N/A: 107058-92
KEY: N/A: 107058-93
KEY: N/A: 107058-94
KEY: N/A: 107058-95
KEY: N/A: 107058-96
KEY: N/A: 107058-97
KEY: N/A: 107058-98
KEY: N/A: 107058-99
KEY: N/A: 107058-100

MANUFACTURER Rapid Deployable Systems, LLC		CAGE CODE 9J9Q9	
TITLE Light Set, Tent			
PART NUMBER 2480478 / 2480474			
APPROVED BY:		DATE	
SIZE: N/A	SCALE: N/A	WEIGHT: N/A	PAGE 1 OF 2

**DISTRIBUTION STATEMENT:
DISTRIBUTION FOR THIS DOCUMENT,
SPECIFICATION AND GRAPHICS ARE
AUTHORIZED FOR PUBLIC RELEASE**

APPENDIX A Revision D

LIGHT SET, TENT PRODUCT DATA SHEET

Company / Cage Code
Manufacturing Source Company
Part Number / NSN

Specifications as applicable

Bulb Type	Wattage	Color Temperature	Beam Angle	Life Span (Hours)	Dimmable	Notes
Incandescent	40W, 60W, 75W, 100W	2700K, 3000K, 3500K	15°, 30°, 45°, 60°, 75°, 90°, 120°	1,000 - 2,000	No	High heat, short life span
Compact Fluorescent (CFL)	13W, 18W, 23W, 29W, 32W, 36W, 40W, 48W, 54W, 60W, 70W, 80W, 90W, 100W	2700K, 3000K, 3500K, 4000K, 5000K	15°, 30°, 45°, 60°, 75°, 90°, 120°	8,000 - 15,000	Yes	Energy efficient, contains mercury
LED	5W, 7W, 9W, 10W, 12W, 15W, 18W, 20W, 24W, 27W, 30W, 36W, 40W, 48W, 56W, 60W, 70W, 80W, 90W, 100W	2700K, 3000K, 3500K, 4000K, 5000K, 6000K	15°, 30°, 45°, 60°, 75°, 90°, 120°	25,000 - 50,000	Yes	Most energy efficient, long life span

EMI Protected Light

Power Consumption (Watts)

Illumination (Unfiltered) fc @ 18"

Illumination (Blackout) fc @ 35"

Length of Light (inches)

Length Including Cord (inches)

Weight (Unpackaged) (lb)

Compliant to MIL-PRF-44259F

Stringable total amount to a single line

Special/Additional Features: