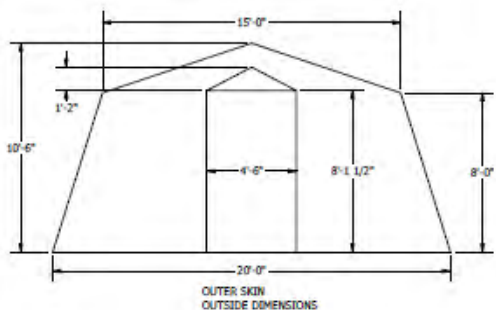
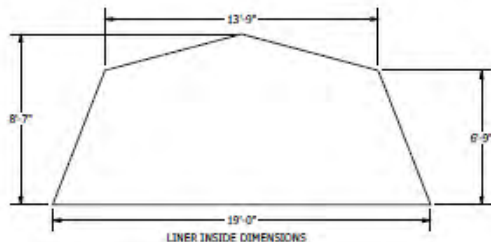
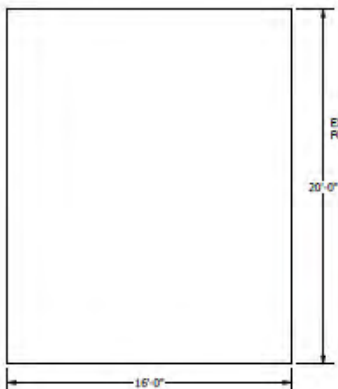
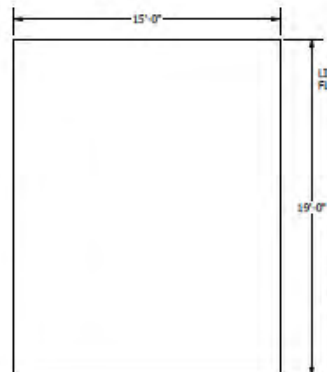


9J9Q9

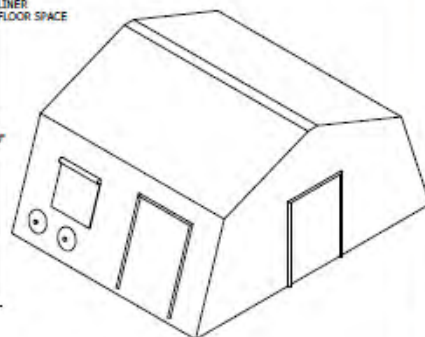
- Notes:
1. Do not scale drawing
  2. Cad generated drawing do not manually update
  3. Units shown are inches (mm)



Contains:  
4 Doors  
2 Windows  
2 ECU holes



Revision History				
REV	DESCRIPTION	DATE	APPROVED	ECN
IR	Initial Release	8/15/2008	TSN	
A	Layout changes	5/2/2024	TSN	



**CONTROLLED DOCUMENT**

This is an electronic copy obtained from the RDS server. Please be certain that this copy is the latest version.


RDS 320 Interior / Exterior Dimensions	
REV	REV
IR	IR
A	A
REV	REV
IR	IR
A	A
REV	REV
IR	IR
A	A



MANUFACTURER	CAGE CODE
Rapid Deployable Systems LLC	9J9Q9

TITLE RDS 320 Tan

PART NUMBER  
2480572

APPROVED BY  DATE

SIZE	SCALE	WEIGHT	PAGE 1 OF 3
N/A	N/A	N/A	

DRAWING PAGE 1 IS A 3D DETAILED SKETCH OR PHOTO THAT IS USED ALONG WITH PAGES 2 AND 3 PRODUCT DATA SHEETS APPENDIX A. REVISION D TO BE USED TO COMPARE SHELTER SYSTEM STANDARD SUPPORT COMPONENTS FOR PROCUREMENT BY US MILITARY USERS. THE DOCUMENT SHALL BE POSTED FOR REVIEW ON THE DLA MIL WEBSITE.

DISTRIBUTION STATEMENT:  
DISTRIBUTION FOR THIS DOCUMENT,  
SPECIFICATION AND GRAPHIC ARE  
AUTHORIZED FOR PUBLIC RELEASE.

ITAR CATEGORY N/A

NON-SENSITIVE



FEDMALL 

**CLICK HERE TO ORDER THIS ITEM IN FEDMALL**

**LOG ON TO FEDMALL IN A 2<sup>nd</sup> TAB FIRST**

**DISTRIBUTION STATEMENT:  
DISTRIBUTION FOR THIS DOCUMENT,  
SPECIFICATION AND GRAPHICS ARE  
AUTHORIZED FOR PUBLIC RELEASE**

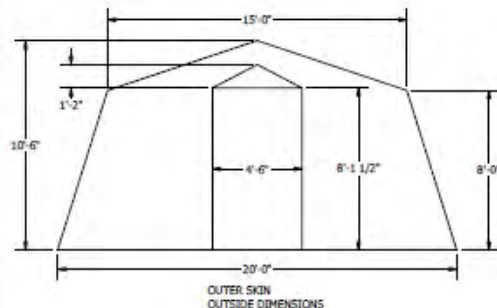
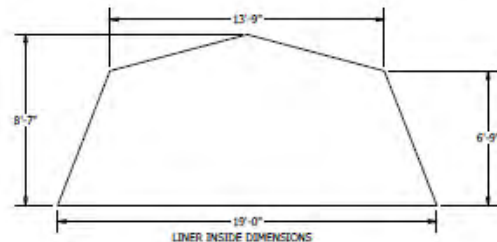
Contractor Name:				CAGE CODE:			
1.PART NUMBER:			2.NSN				
3.NAME:			4.TYPE:		5.CLASS:		
6.COLOR:		7. Support System:			8.SERIES:		
9. INTENDED USE:							
10.DIMENSIONS (IN FEET AND INCHES)		LENGTH: Feet      Inches		WIDTH: Feet      Inches		HEIGHT Feet      Inches RIDGE: EAVE:	
11.DIMENSIONS (EXTERNAL GUYED)		LENGTH Feet      Inches		WIDTH Feet      Inches			
12.SQUARE FEET INTERIOR:							
13.WEIGHT (POUNDS, UNPACKAGED)      LBS.				14.WEIGHT (PACKAGED) LBS		15.SHIPPING CUBE (PACKAGED)      CU.	
16. SHIPPING CONTAINER		LENGTH Inches		WIDTH Inches		HEIGHT Inches	
17.SET-UP TIME/ NUMBER OF PERSONS      People TIME UNDER CANOPY      Minutes Minutes				18.STRIKE TIME/ NUMBER OF PERSONS      People Minutes			
19.SNOW LOAD:      Design Tested				20.Wind Load:      Design Tested			
21.PARTS INCLUDED (Include Quantity):							
22.DESCRPTION:							
23. ACCESSORY AND SUPPORT EQUIPMENT:		PART NUMBER Or NSN		Check if Included		DESCRIPTION	

<b>LIGHT SET</b> Product Data Sheet			
<b>ELECTRICAL OUTLET SET</b> Product Data Sheet			
<b>FLOORING</b> Product Data Sheet			
<b>HEATER</b> Product Data Sheet			
<b>AIR CONDITIONER</b> Product Data Sheet			
<b>GENERATOR</b> Product Data Sheet			
<b>POWER DISTRIBUTION</b> Product Data Sheet			
<b>TRAILER MOUNTED SUPPORT SYSTEM</b> Product Data Sheet			

<b>INSULATED LINER Product Data Sheet</b>			
<b>INSULATED FLOORING Product Data Sheet</b>			
<b>SOLAR SHADE/ CAMOU. NETT Product Data Sheet</b>			

Page Code 9J9Q9

- Notes:**
1. Do not scale drawing
  2. Cad generated drawing do not manually update
  3. Units shown are inches (mm)

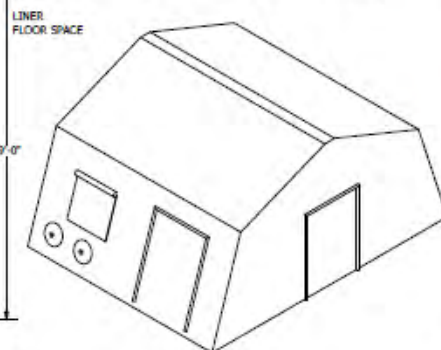


Contains:  
4 Doors  
2 Windows  
2 ECU holes

Drawing Number 82100455

Rev A

REVISION HISTORY				
REV	DESCRIPTION	DATE	APPROVED	BY
IR	Initial Release	8/15/2008	TSN	
A	Layout changes	5/2/2024	TSN	



EXTERIOR  
FOOT PRINT

**CONTROLLED DOCUMENT**

This is an electronic copy obtained from the RDS server. Please be certain that this copy is the latest version.

RDS 320 Interior / Exterior Dimensions	
REV	DATE
IR	8/15/2008
A	5/2/2024
DRAWN BY: TSN	
CHECKED BY: TSN	
APPROVED BY: TSN	
DATE: 5/2/2024	
SCALE: 1:1	
SHEET: 1 OF 1	



MANUFACTURER  
Rapid Deployable Systems, LLC

CAGE CODE  
9J9Q9

TITLE  
Accessory, Tent, Thermal Liner

PART NUMBER  
2480823

APPROVED BY

DATE

SIZE N/A SCALE N/A WEIGHT N/A PAGE 1 OF 2

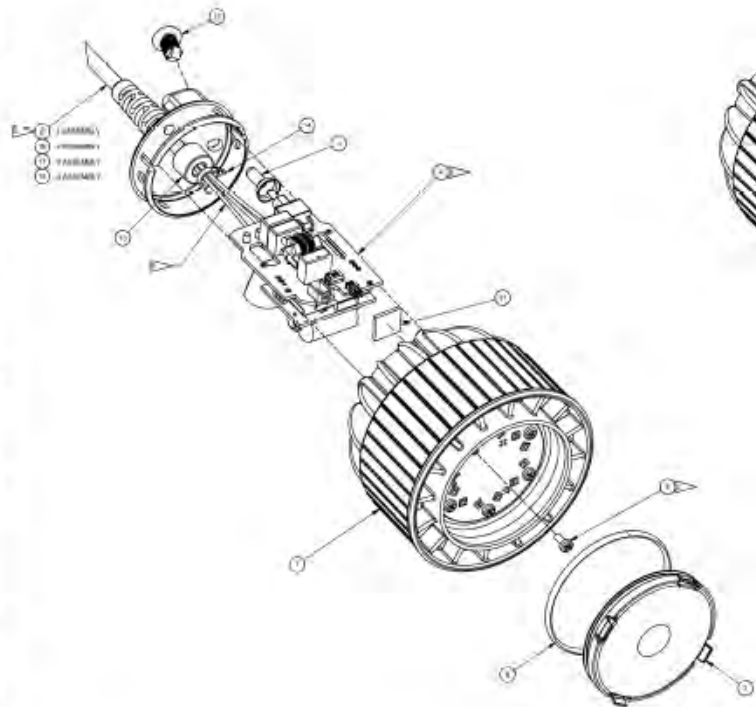
DRAWING PAGE 1 IS A NON-DETAILED SKETCH OR PHOTO THAT IS USED ALONG WITH PAGES 2 AND 3 PRODUCT DATA SHEETS. APPROPRIATE REVISION D TO BE USED TO COMPLY WITH SYSTEMS AND SUPPORT COMPONENTS FOR PROCUREMENT BY US MILITARY USGNS. THE DOCUMENTS WILL BE POSTED FOR REVIEW ON THE DLA MIL WEBSITE.

DISTRIBUTION STATEMENT:  
DISTRIBUTION FOR THIS DOCUMENT,  
SPECIFICATION AND GRAPHIC ARE  
AUTHORIZED FOR PUBLIC RELEASE.

ITAR CATEGORY N/A

NON-SENSITIVE

<b>APPENDIX A</b> <b>Revision D</b>  Company . Cage Code Manufacturing Source Company Part Number / NSN	<b>ACCESSORY, TENT PRODUCT DATA SHEET</b>
Specifications as applicable	
Insulated Liner	
Insulated Flooring	
Solar Shade/ Camouflage Netting	
Weight (Unpackaged) (lb.)	
Color in accordance with FED-STD-595	
Special/Additional Features:	



DETAIL A  
SCALE 3/4

LIGHT BOARD INSTALLATION  
SCALE 3/4

CONTINUATION SHEET  
PROPRIETARY

TITLE: GENERAL PURPOSE (GP) LED LIGHT STRAND			
REV:	FROM:	DESCRIPTION:	REV:
B	52868	107058	1
REV:	DATE:	REV:	DATE:

UPON PAGE 1 IS A NON-DETAILED SECTION OF THE PRODUCT THAT IS USED TO ILLUSTRATE THE PRODUCT DATA SHEET. A REVISION D TO BE USED TO COMBINE SHIELD SYSTEMS AND SUPPORT COMPONEN IS FOR PROTECTION BY US MILITARY USERS. THE DOCUMENT WILL BE FOR THE REMOVAL OF THE DUAL WEIGHT.

DISTRIBUTION STATEMENT:  
DISTRIBUTION FOR THIS DOCUMENT,  
SPECIFICATION AND GRAPHIC ARE  
AUTHORIZED FOR PUBLIC RELEASE.



TITLE: GENERAL PURPOSE (GP) LED LIGHT STRAND	
REV:	FROM:
B	52868
REV:	DATE:

MANUFACTURER Rapid Deployable Systems LLC		CAGE CODE 9J9Q9	
TITLE Light Set, Tent			
PART NUMBER 2480474			
APPROVED BY			DATE
SIZE N/A	SCALE N/A	WEIGHT N/A	PAGE 1 OF 2

<b>APPENDIX A</b> <b>Revision D</b>  <b>Company / Cage Code</b> <b>Manufacturing Source Company</b> <b>Part Number / NSN</b>	<b>LIGHT SET, TENT PRODUCT DATA SHEET</b>	
Specifications as applicable		
Bulb Type		
EMI Protected Light		
Power Consumption (Watts)		
Illumination (Unfiltered) fc @ 18"		
Illumination (Blackout) fc @ 35"		
Length of Light (inches)		
Length Including Cord (inches)		
Weight (Unpackaged) (lb)		
Compliant to MIL-PRF-44259F		
Stringable total amount to a single line		
Special/Additional Features:		