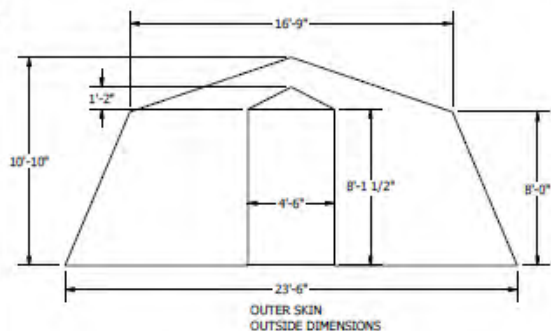
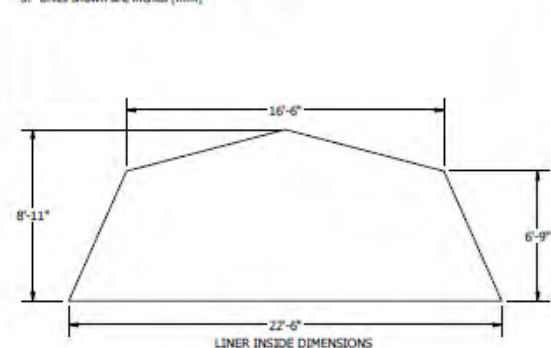


9J9Q9

- Notes:
1. Do not scale drawing
 2. Cad generated drawing do not manually update
 3. Units shown are inches (mm)

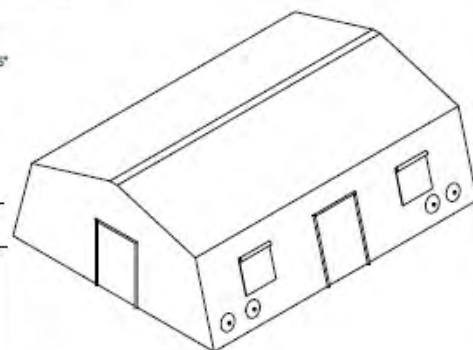


Contains:
4 Doors
4 Windows
4 ECU holes

Drawing number: 82100435

Rev. C

REVISION HISTORY				
REV	DESCRIPTION	DATE	APPROVED	ECN
IR	Initial Release	3/12/2008	TSN	
A	Corrected dimension	3/24/2008	TSN	
B	Corrected text	8/18/2008	TSN	
C	Layout change	5/2/2024	TSN	



CONTROLLED DOCUMENT
This is an electronic copy obtained from the RDS server. Please be certain that this copy is the latest version.

RDS 695 Interior / Exterior Dimensions		RDS 695	
DATE	8/18/2008	REV	C
BY	TSN	APP	TSN
CHECKED	TSN	DATE	8/18/2008
FILE	82100435	REV	C
DATE	8/18/2008	REV	C

DRAWING PAGE 1 IS A NON-DETAILED SKETCH OR PHOTO THAT IS USED ALONG WITH PAGES 2 AND 3 PRODUCT DATA SHEETS, APPENDIX A, REVISION D TO BE USED TO COMPARE SHELTER SYSTEMS AND SUPPORT COMPONENTS FOR PROCUREMENT BY US MILITARY USERS. THE DOCUMENTS WILL BE POSTED FOR REVIEW ON THE DLA MIL WEBSITE.

DISTRIBUTION STATEMENT:
DISTRIBUTION FOR THIS DOCUMENT,
SPECIFICATION AND GRAPHIC ARE
AUTHORIZED FOR PUBLIC RELEASE.



MANUFACTURER Rapid Deployable Systems LLC		CAGE CODE 9J9Q9	
TITLE RDS 695 Tan			
PART NUMBER 2480590			
APPROVED BY 			DATE
SIZE N/A	SCALE N/A	WEIGHT N/A	PAGE 1 OF 3

ITAR CATEGORY N/A

NON-SENSITIVE



FEDMALL 

CLICK HERE TO ORDER THIS ITEM IN FEDMALL

LOG ON TO FEDMALL IN A 2nd TAB FIRST

**DISTRIBUTION STATEMENT:
DISTRIBUTION FOR THIS DOCUMENT,
SPECIFICATION AND GRAPHICS ARE
AUTHORIZED FOR PUBLIC RELEASE**

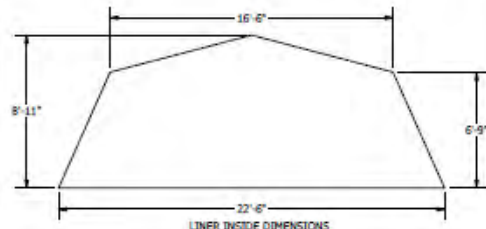
Contractor Name:				CAGE CODE:			
1.PART NUMBER:			2.NSN				
3.NAME:			4.TYPE:		5.CLASS:		
6.COLOR:		7. Support System:			8.SERIES:		
9. INTENDED USE:							
10.DIMENSIONS (IN FEET AND INCHES)		LENGTH: Feet Inches		WIDTH: Feet Inches		HEIGHT Feet Inches RIDGE: EAVE:	
11.DIMENSIONS (EXTERNAL GUYED)		LENGTH Feet Inches		WIDTH Feet Inches			
12.SQUARE FEET INTERIOR:							
13.WEIGHT (POUNDS, UNPACKAGED) LBS.				14.WEIGHT (PACKAGED) LBS		15.SHIPPING CUBE (PACKAGED) CU.	
16. SHIPPING CONTAINER		LENGTH Inches		WIDTH Inches		HEIGHT Inches	
17.SET-UP TIME/ NUMBER OF PERSONS People TIME UNDER CANOPY Minutes Minutes				18.STRIKE TIME/ NUMBER OF PERSONS People Minutes			
19.SNOW LOAD: Design Tested				20.Wind Load: Design Tested			
21.PARTS INCLUDED (Include Quantity):							
22.DESCRPTION:							
23. ACCESSORY AND SUPPORT EQUIPMENT:		PART NUMBER Or NSN		Check if Included		DESCRIPTION	

LIGHT SET Product Data Sheet			
ELECTRICAL OUTLET SET Product Data Sheet			
FLOORING Product Data Sheet			
HEATER Product Data Sheet			
AIR CONDITIONER Product Data Sheet			
GENERATOR Product Data Sheet			
POWER DISTRIBUTION Product Data Sheet			
TRAILER MOUNTED SUPPORT SYSTEM Product Data Sheet			

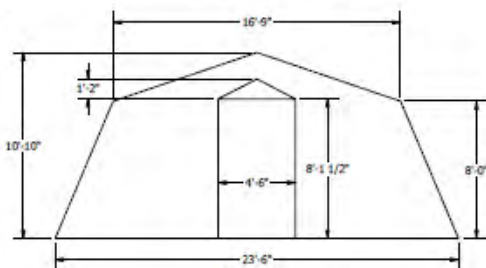
INSULATED LINER Product Data Sheet			
INSULATED FLOORING Product Data Sheet			
SOLAR SHADE/ CAMOU. NETT Product Data Sheet			

Page Code 9J9Q9

- Notes:
1. Do not scale drawing
 2. Cad generated drawing do not manually update
 3. Units shown are inches [mm]



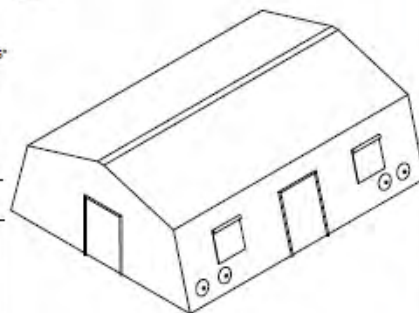
LINER INSIDE DIMENSIONS



OUTER SKIN
OUTSIDE DIMENSIONS

Contains:
4 Doors
4 Windows
4 ECU holes

Revision History					
REV	DESCRIPTION	DATE	APPROVED	ECN	
1	Initial Release	3/12/2008	TSN		
A	Corrected dimension	3/14/2008	TSN		
B	Corrected text	8/18/2008	TSN		
C	Layout change	5/2/2024	TSN		



CONTROLLED DOCUMENT
This is an electronic copy obtained from the RDS server. Please do not
put this copy in the latest version.

RDS RAPID Deployable Systems		RDS 695 Interior / Exterior Dimensions	
REV	DATE	REV	DATE
1	3/12/2008	1	3/12/2008
CAGE CODE		CAGE CODE	
82100435		82100435	
PAGE 1 OF 1		PAGE 1 OF 1	



MANUFACTURER
Rapid Deployable Systems, LLC

CAGE CODE
9J9Q9

TITLE
Accessory, Tent, Thermal Liner

PART NUMBER
2480827

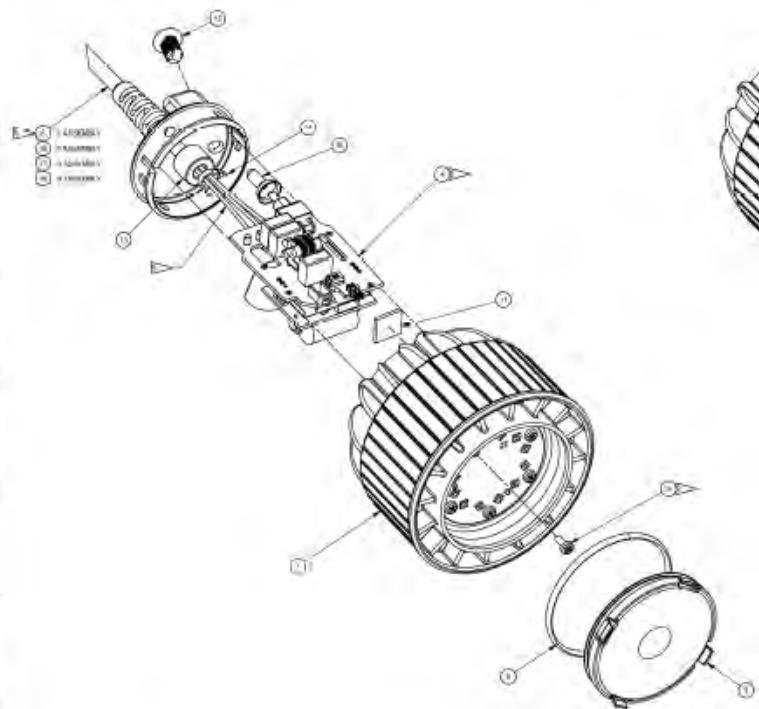
APPROVED BY

DATE

DISTRIBUTION STATEMENT:
DISTRIBUTION FOR THIS DOCUMENT,
SPECIFICATION AND GRAPHIC ARE
AUTHORIZED FOR PUBLIC RELEASE.

SIZE N/A SCALE N/A WEIGHT N/A PAGE 1 OF 2

<div>APPENDIX A</div> <div>Revision D</div> <div>Company . Cage Code</div> <div>Manufacturing Source Company</div> <div>Part Number / NSN</div>	ACCESSORY, TENT PRODUCT DATA SHEET
Specifications as applicable	
Insulated Liner	
Insulated Flooring	
Solar Shade/ Camouflage Netting	
Weight (Unpackaged) (lb.)	
Color in accordance with FED-STD-595	
Special/Additional Features:	



DETAIL A
SCALE 3/4

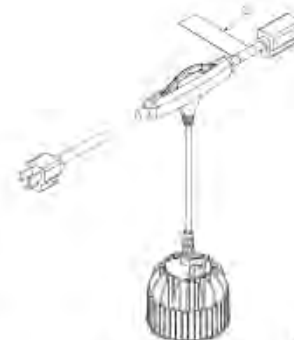
LIGHT BOARD INSTALLATION
SCALE 3/4

CONTINUATION SHEET
PROPRIETARY

GENERAL PURPOSE (GP) LED LIGHT STRAND			
REV	DESCRIPTION	DATE	BY
B	528E6	107058	AP
DESIGNED BY	DATE	APPROVED BY	DATE

DRAWING PRICE 1 IS A NON-DETAILED SKETCH OR PHOTO THAT IS USED ALONG WITH PAGES 2 AND 3. PRODUCT DATA SHEETS APPROXIMATELY 10 TO 15 USED TO CONSTRUCT THIS DOCUMENT AND SUPPORT CONCEPTS FOR PRODUCTION BY US MILITARY USERS. THIS DOCUMENTS WILL BE POSTED FOR REVIEW ON THE BATTLE WEBSITE.

DISTRIBUTION STATEMENT:
DISTRIBUTION FOR THIS DOCUMENT,
SPECIFICATION AND GRAPHIC ARE
AUTHORIZED FOR PUBLIC RELEASE.



GENERAL PURPOSE (GP) LED LIGHT STRAND	
REV	DESCRIPTION
B	528E6
DESIGNED BY	DATE

MANUFACTURER Rapid Deployable Systems LLC		CAGE CODE 9J9Q9	
TITLE Light Set, Tent			
PART NUMBER 2480478			
APPROVED BY			DATE
SIZE N/A	SCALE N/A	WEIGHT N/A	PAGE 1 OF 2

APPENDIX A Revision D Company / Cage Code Manufacturing Source Company Part Number / NSN	LIGHT SET, TENT PRODUCT DATA SHEET	
Specifications as applicable		
Bulb Type		
EMI Protected Light		
Power Consumption (Watts)		
Illumination (Unfiltered) fc @ 18"		
Illumination (Blackout) fc @ 35"		
Length of Light (inches)		
Length Including Cord (inches)		
Weight (Unpackaged) (lb)		
Compliant to MIL-PRF-44259F		
Stringable total amount to a single line		
Special/Additional Features:		