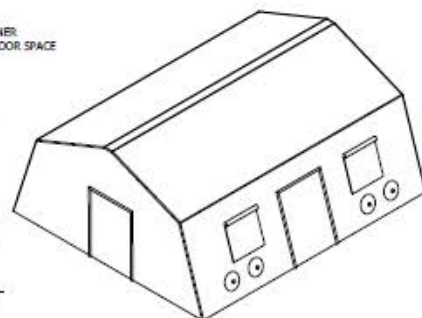
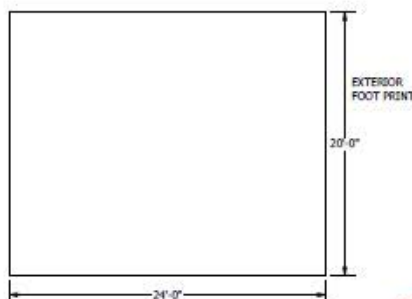
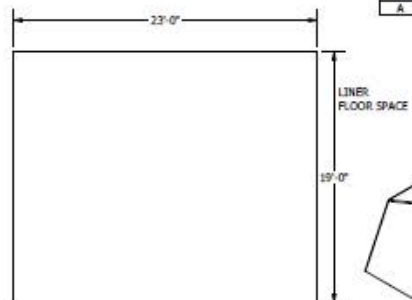
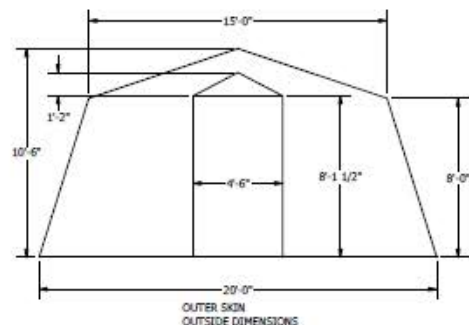
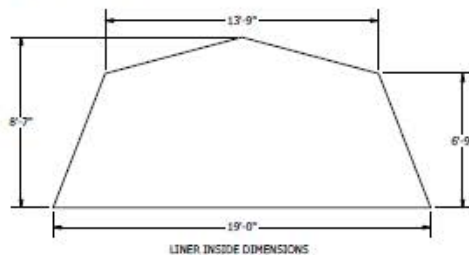


9J9Q9

- Notes**
1. Do not scale drawing
 2. Cad generated drawing do not manually update
 3. Units shown are inches [mm]



82100454

REVISION HISTORY				
REV	DESCRIPTION	DATE	APPROVED	ECN
IR	Initial Release	8/15/2008	TSN	
A	Layout changes	5/2/2024	TSN	

CONTROLLED DOCUMENT

This is an electronic copy obtained from the RDS server. Please be certain that this copy is the latest version.

		Rapid Deployable Systems 4000 S. 10th St. Phoenix, AZ 85040-1000 Phone: 602.955.1000	
RDS 480 Interior / Exterior Dimensions			
DESIGNED BY: [blank] DRAWN BY: [blank] CHECKED BY: [blank] DATE: [blank]	RDS B	PART NUMBER 82100454	SHEET 1 OF 1

Contains:
4 Doors
4 Windows
4 ECU holes



MANUFACTURER Rapid Deployable Systems LLC	CAGE CODE 9J9Q9
--	--------------------

TITLE RDS 635 Green

PART NUMBER
2480620

APPROVED BY DATE

0 DRAWING PAGE 1 IS A NON-DETAILED SKETCH OR PHOTO THAT IS USED ALONG WITH PAGES 2 AND 3. PRODUCT DATA SHEET'S APPENDIX A, REVISION D TO BE USED TO COMPARE SHIP, FIELD, DIST. AND SUPPORT COMPONENTS FOR PROCUREMENT BY US MILITARY USERS. THE DOCUMENTS WILL BE POSTED FOR REVIEW ON THE DLA MIL WEBSITE.

DISTRIBUTION STATEMENT:
DISTRIBUTION FOR THIS DOCUMENT,
SPECIFICATION AND GRAPHIC ARE
AUTHORIZED FOR PUBLIC RELEASE.

SIZE N/A	SCALE N/A	WEIGHT N/A	PAGE 1 OF 3
----------	-----------	------------	-------------



FEDMALL 

CLICK HERE TO ORDER THIS ITEM IN FEDMALL

LOG ON TO FEDMALL IN A 2nd TAB FIRST

**DISTRIBUTION STATEMENT:
DISTRIBUTION FOR THIS DOCUMENT,
SPECIFICATION AND GRAPHICS ARE
AUTHORIZED FOR PUBLIC RELEASE**

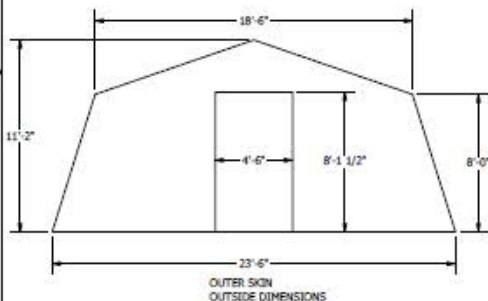
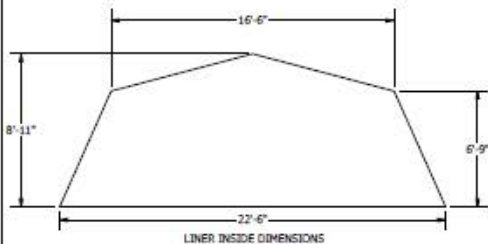
Contractor Name:				CAGE CODE:			
1.PART NUMBER:			2.NSN				
3.NAME:			4.TYPE:		5.CLASS:		
6.COLOR:		7. Support System:			8.SERIES:		
9. INTENDED USE:							
10.DIMENSIONS (IN FEET AND INCHES)		LENGTH: Feet Inches		WIDTH: Feet Inches		HEIGHT Feet Inches RIDGE: EAVE:	
11.DIMENSIONS (EXTERNAL GUYED)		LENGTH Feet Inches		WIDTH Feet Inches			
12.SQUARE FEET INTERIOR:							
13.WEIGHT (POUNDS, UNPACKAGED) LBS.				14.WEIGHT (PACKAGED) LBS		15.SHIPPING CUBE (PACKAGED) CU.	
16. SHIPPING CONTAINER		LENGTH Inches		WIDTH Inches		HEIGHT Inches	
17.SET-UP TIME/ NUMBER OF PERSONS People TIME UNDER CANOPY Minutes Minutes				18.STRIKE TIME/ NUMBER OF PERSONS People Minutes			
19.SNOW LOAD: Design Tested				20.Wind Load: Design Tested			
21.PARTS INCLUDED (Include Quantity):							
22.DESCRPTION:							
23. ACCESSORY AND SUPPORT EQUIPMENT:		PART NUMBER Or NSN		Check if Included		DESCRIPTION	

LIGHT SET Product Data Sheet			
ELECTRICAL OUTLET SET Product Data Sheet			
FLOORING Product Data Sheet			
HEATER Product Data Sheet			
AIR CONDITIONER Product Data Sheet			
GENERATOR Product Data Sheet			
POWER DISTRIBUTION Product Data Sheet			
TRAILER MOUNTED SUPPORT SYSTEM Product Data Sheet			

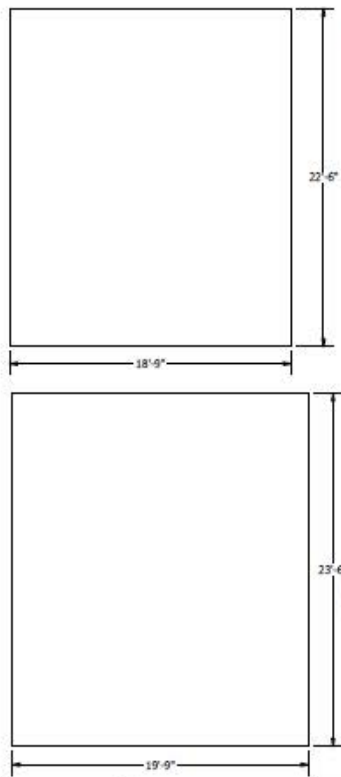
INSULATED LINER Product Data Sheet			
INSULATED FLOORING Product Data Sheet			
SOLAR SHADE/ CAMOU. NETT Product Data Sheet			

Page Code 9J9Q9

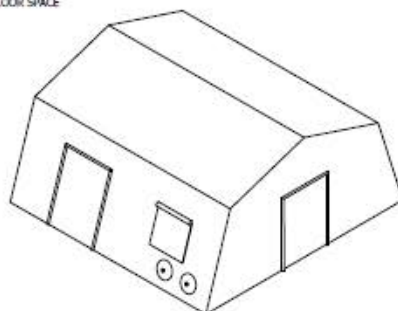
- Notes:
1. Do not scale drawing
 2. Cad generated drawing do not manually update
 3. Units shown are inches (mm)



Contains:
4 Doors
2 Windows
4 ECU holes



LINER
FLOOR SPACE



Revision History				
REV	DESCRIPTION	DATE	APPROVED	ECN
IR	Initial Release	5/7/2014	TSN	

CONTROLLED DOCUMENT
This is an electronic copy obtained from the RDS server. Please be certain that this copy is the latest version.

		Rapid Deployable Systems 48 South Ave Englewood, CO 80150-1001 P.O. Box 200000	
RDS 460 Interior / Exterior Dimensions			
DESIGNED BY: [blank] DRAWN BY: [blank] CHECKED BY: [blank] DATE: [blank]	TITLE: [blank] CAGE CODE: [blank] PART NO: [blank]	DWG. NO: 82100690 SCALE: [blank] SHEET: 1 OF 1	REV: [blank] BY: [blank] DATE: [blank]



MANUFACTURER Rapid Deployable Systems, LLC			CAGE CODE 9J9Q9	
TITLE Accessory, Tent, Thermal Liner				
PART NUMBER 2480826				
APPROVED BY			DATE	
SIZE N/A	SCALE N/A	WEIGHT N/A	PAGE 102	

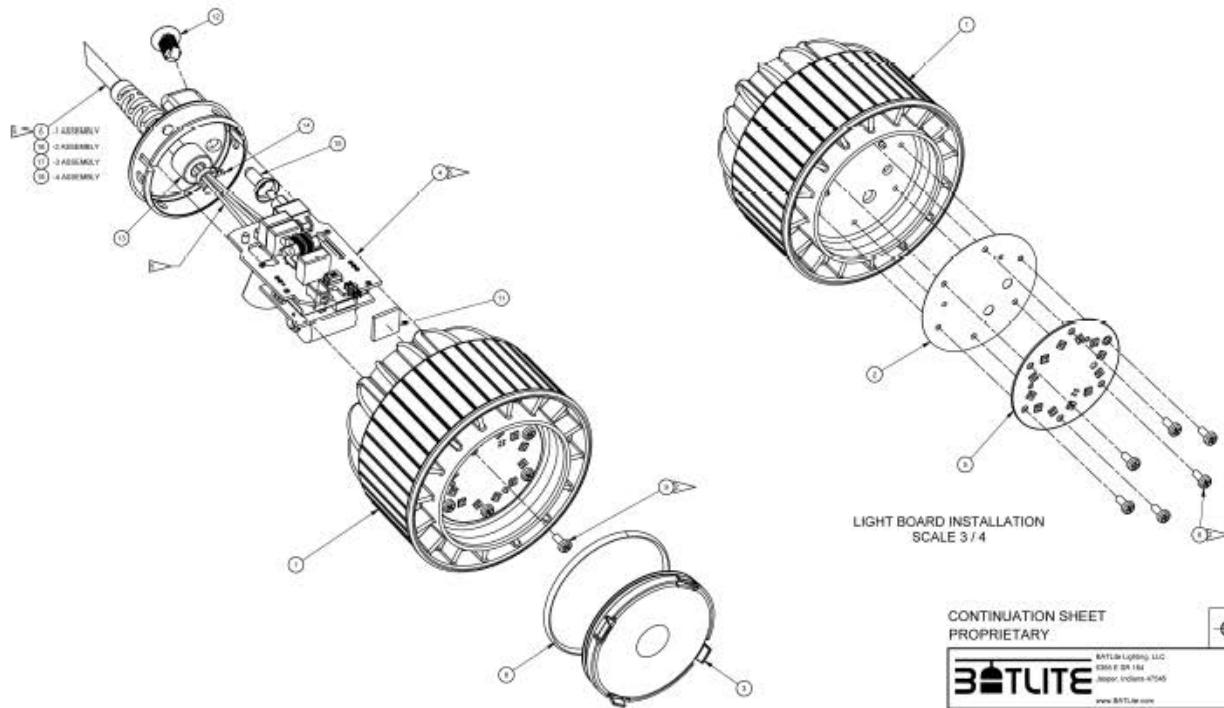
DRAWING PAGE 1 IS A NON DETAILED SKETCH OR PHOTO THAT IS USED ALONG WITH PAGES 2 AND 3 PRODUCT DATA SHEETS, APPENDIX A, REVISION B TO BE USED TO COMBINE SHIELDER SYSTEMS AND SUPPORT COMPONENTS FOR PROCUREMENT BY US MILITARY USERS. THE DOCUMENTS WILL BE POSTED FOR REVIEW ON THE DUALVIEW SITE.

DISTRIBUTION STATEMENT:
DISTRIBUTION FOR THIS DOCUMENT, SPECIFICATION AND GRAPHIC ARE AUTHORIZED FOR PUBLIC RELEASE.

ITAR CATEGORY N/A

NON-SENSITIVE

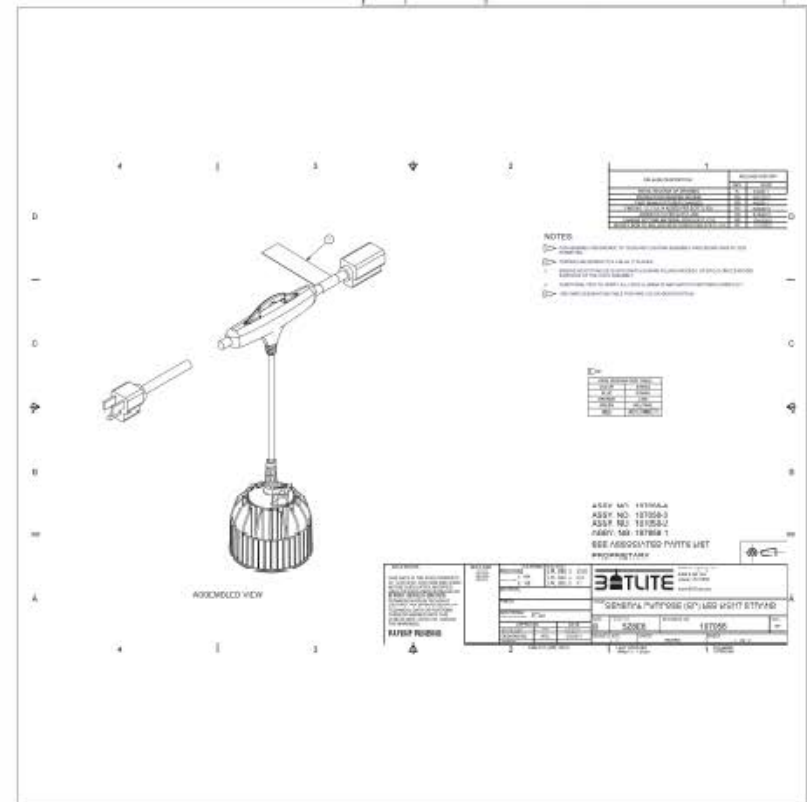
<div>APPENDIX A</div> <div>Revision D</div> <div>Company . Cage Code</div> <div>Manufacturing Source Company</div> <div>Part Number / NSN</div>	ACCESSORY, TENT PRODUCT DATA SHEET
Specifications as applicable	
Insulated Liner	
Insulated Flooring	
Solar Shade/ Camouflage Netting	
Weight (Unpackaged) (lb.)	
Color in accordance with FED-STD-595	
Special/Additional Features:	



DETAIL A
SCALE 3/4

CONTINUATION SHEET
PROPRIETARY

BATLITE Lighting, LLC 1304 E DR 184 Rapid, Indiana 47545 www.BATLITE.com			
TITLE: GENERAL PURPOSE (GP) LED LIGHT STRAND			
REV	DESCRIPTION	DATE	BY
B	528E6	107058	HY
SCALE: 3/4		DATE	BY
INCHES		1 OF 3	



ASSEMBLED VIEW

NOTES

- 1. DIMENSIONS ARE TO CENTER UNLESS OTHERWISE SPECIFIED.
- 2. DIMENSIONS ARE TO CENTER UNLESS OTHERWISE SPECIFIED.
- 3. DIMENSIONS ARE TO CENTER UNLESS OTHERWISE SPECIFIED.
- 4. DIMENSIONS ARE TO CENTER UNLESS OTHERWISE SPECIFIED.

REV	DESCRIPTION	DATE	BY
1	528E6	107058	HY

ASSY NO: 15700A
ASSY NO: 15700B
ASSY NO: 15700C
PART: 15700A 1
SEE ASSOCIATED PARTS LIST

GENERAL PURPOSE (GP) LED LIGHT STRAND	
REV	DESCRIPTION
B	528E6
DATE: 107058	
BY: HY	

MANUFACTURER Rapid Deployable Systems LLC		CAGE CODE 9J9Q9	
TITLE Light Set, Tent			
PART NUMBER 2480478			
APPROVED BY 			DATE
SIZE N/A	SCALE N/A	WEIGHT N/A	PAGE 1 OF 2

DRAWING PAGE 1 IS A NON-RELEASED SKETCH OR PHOTO THAT IS USED ALONG WITH PAGES 2 AND 3. PRODUCT DATA SHEETS, APPENDIX A, REVISION D TO BE USED TO COMPILE SHIELD SYSTEMS AND SUPPORT COMPONENTS FOR PROCUREMENT BY US MILITARY USCRS. THE DOCUMENTS WILL BE POSTED FOR REVIEW ON THE DLA MIL VLS SITE.

DISTRIBUTION STATEMENT:
DISTRIBUTION FOR THIS DOCUMENT,
SPECIFICATION AND GRAPHIC ARE
AUTHORIZED FOR PUBLIC RELEASE.

**DISTRIBUTION STATEMENT:
DISTRIBUTION FOR THIS DOCUMENT,
SPECIFICATION AND GRAPHICS ARE
AUTHORIZED FOR PUBLIC RELEASE**

APPENDIX A Revision D

Company / Cage Code
Manufacturing Source Company
Part Number / NSN

LIGHT SET, TENT PRODUCT DATA SHEET

Specifications as applicable		
Bulb Type		
EMI Protected Light		
Power Consumption (Watts)		
Illumination (Unfiltered) fc @ 18"		
Illumination (Blackout) fc @ 35"		
Length of Light (inches)		
Length Including Cord (inches)		
Weight (Unpackaged) (lb)		
Compliant to MIL-PRF-44259F		
Stringable total amount to a single line		
Special/Additional Features:		