

PCR-F-001  
APPENDIX A  
15 January 2009  
W/Change 01 7 Jun 17 ES17-044 (DSCP-SS-17-00962)  
SUPERSEDING  
PCR-F-001  
APPENDIX A  
11 May 2007

## PCR-F-001 FIRST STRIKE™ BAR LABELS

### A.1 SCOPE

A.1.1 Scope. This appendix provides additional guidance to help the specification developer define section D-2 requirements. This appendix is a mandatory part of this specification. The information contained herein is intended for compliance.

PCR-F-001  
APPENDIX A  
15 January 2009  
W/Change 01 7 Jun 17 ES17-044 (DSCP-SS-17-00962)  
SUPERSEDING  
PCR-F-001  
APPENDIX A  
11 May 2007

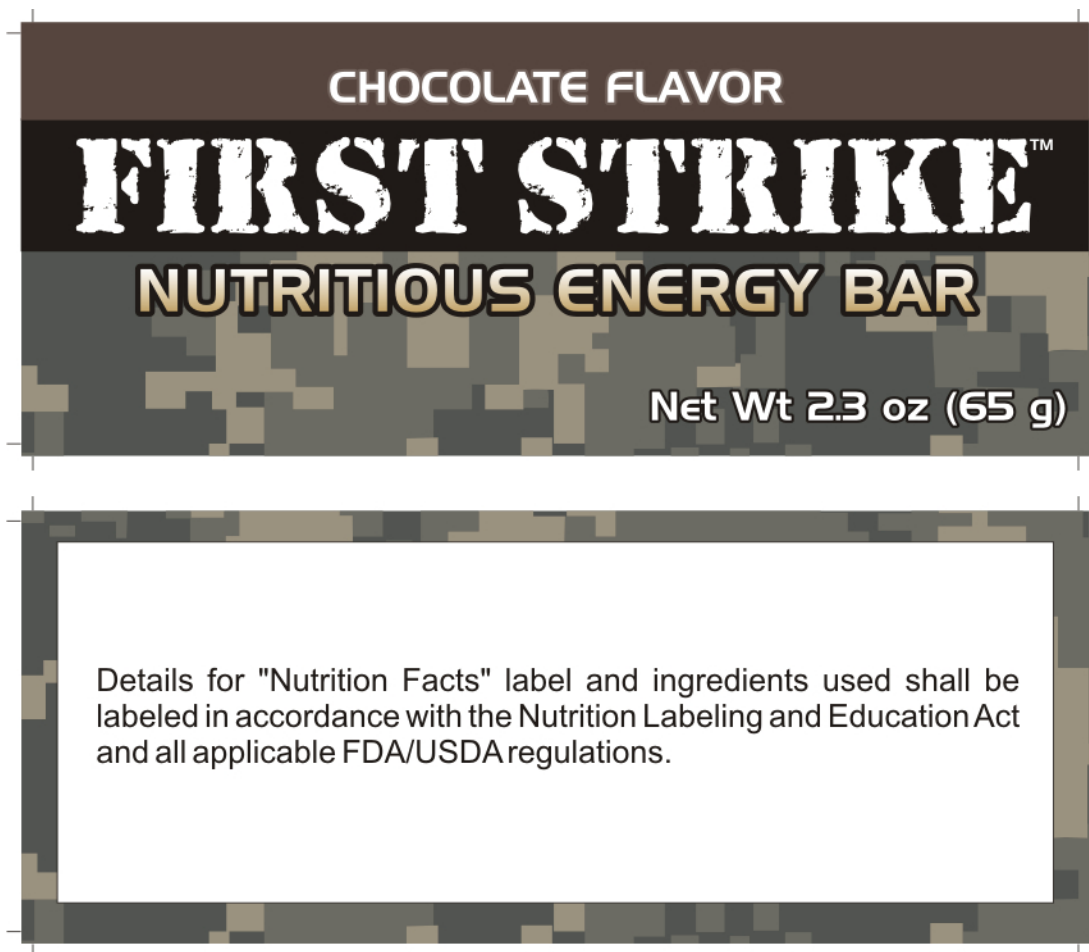


FIGURE 1, FLAVOR I

FIGURE A-1.

PCR-F-001  
APPENDIX A  
15 January 2009  
W/Change 01 7 Jun 17 ES17-044 (DSCP-SS-17-00962)  
SUPERSEDING  
PCR-F-001  
APPENDIX A  
11 May 2007

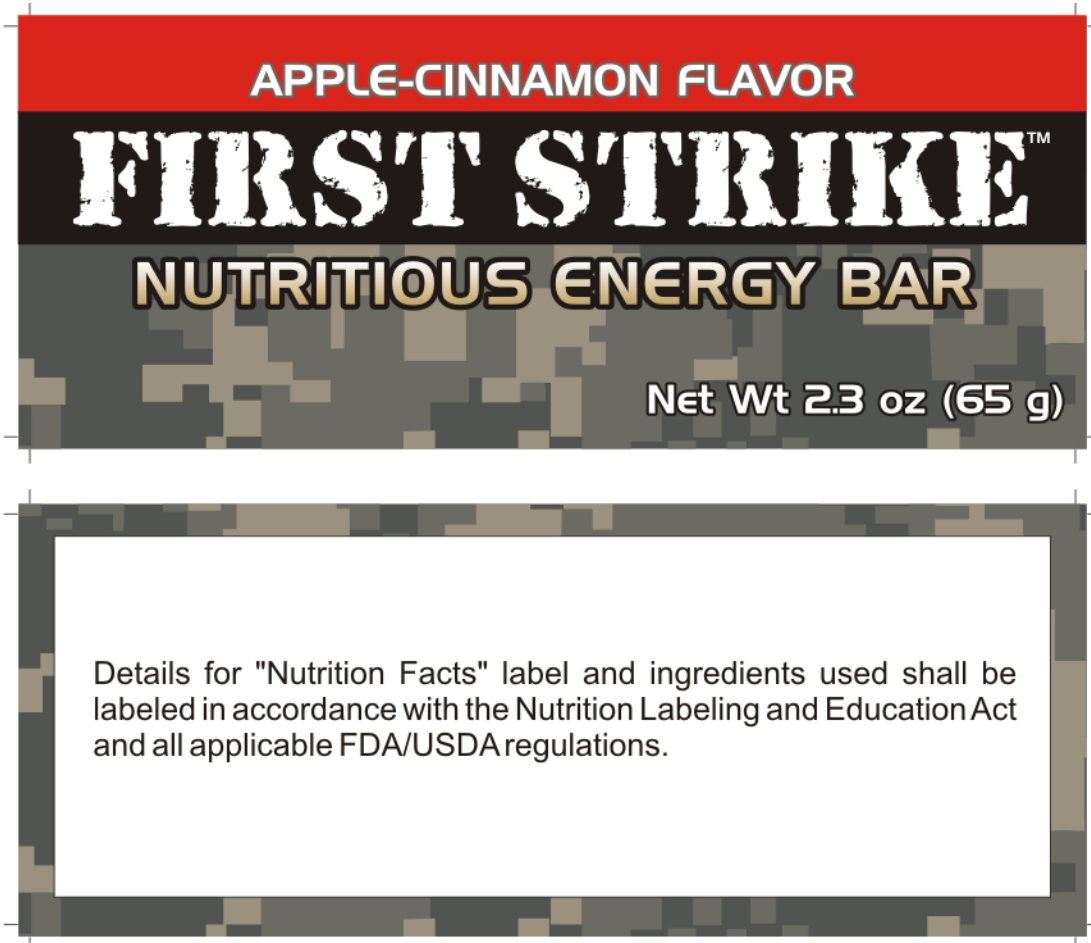


FIGURE 1, FLAVOR II

FIGURE A-2

PCR-F-001  
APPENDIX A  
15 January 2009  
W/Change 01 7 Jun 17 ES17-044 (DSCP-SS-17-00962)  
SUPERSEDING  
PCR-F-001  
APPENDIX A  
11 May 2007

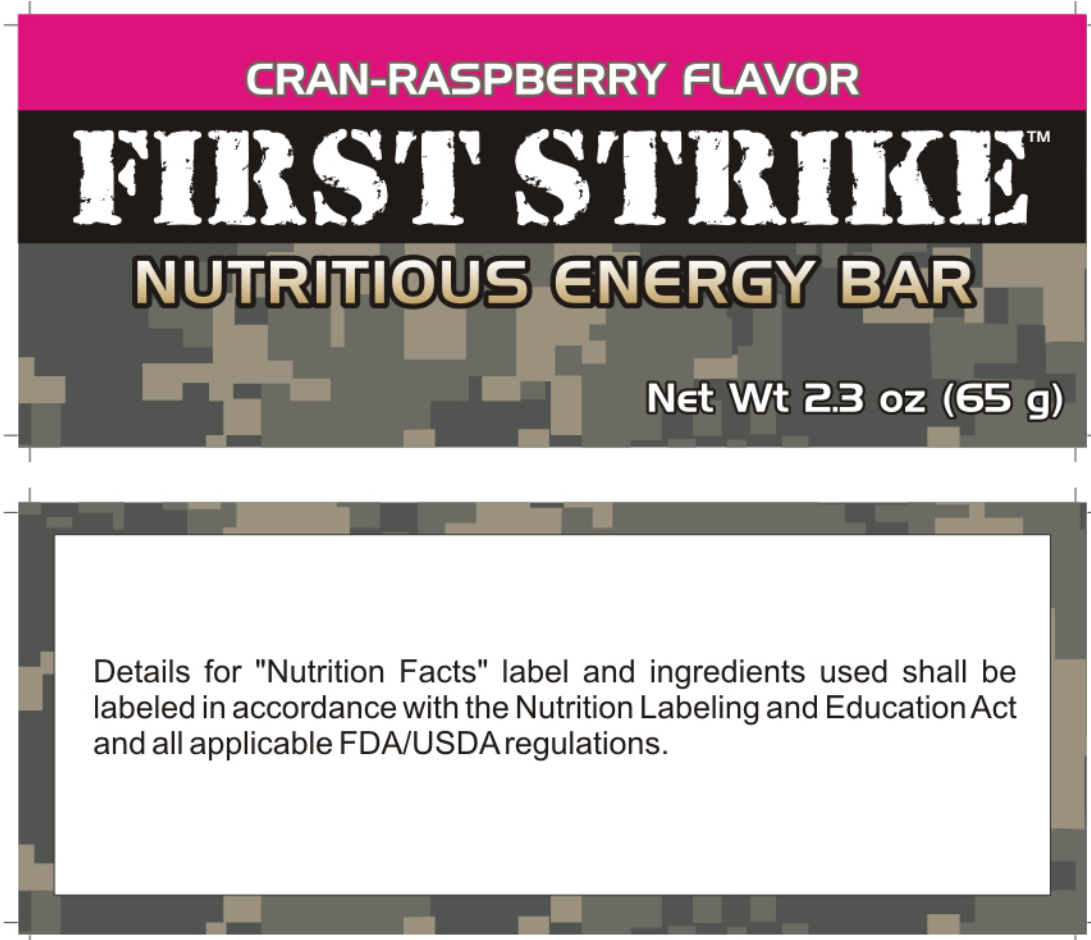


FIGURE 1, FLAVOR III

FIGURE A-3

PCR-F-001  
APPENDIX A  
15 January 2009  
W/Change 01 7 Jun 17 ES17-044 (DSCP-SS-17-00962)  
SUPERSEDING  
PCR-F-001  
APPENDIX A  
11 May 2007

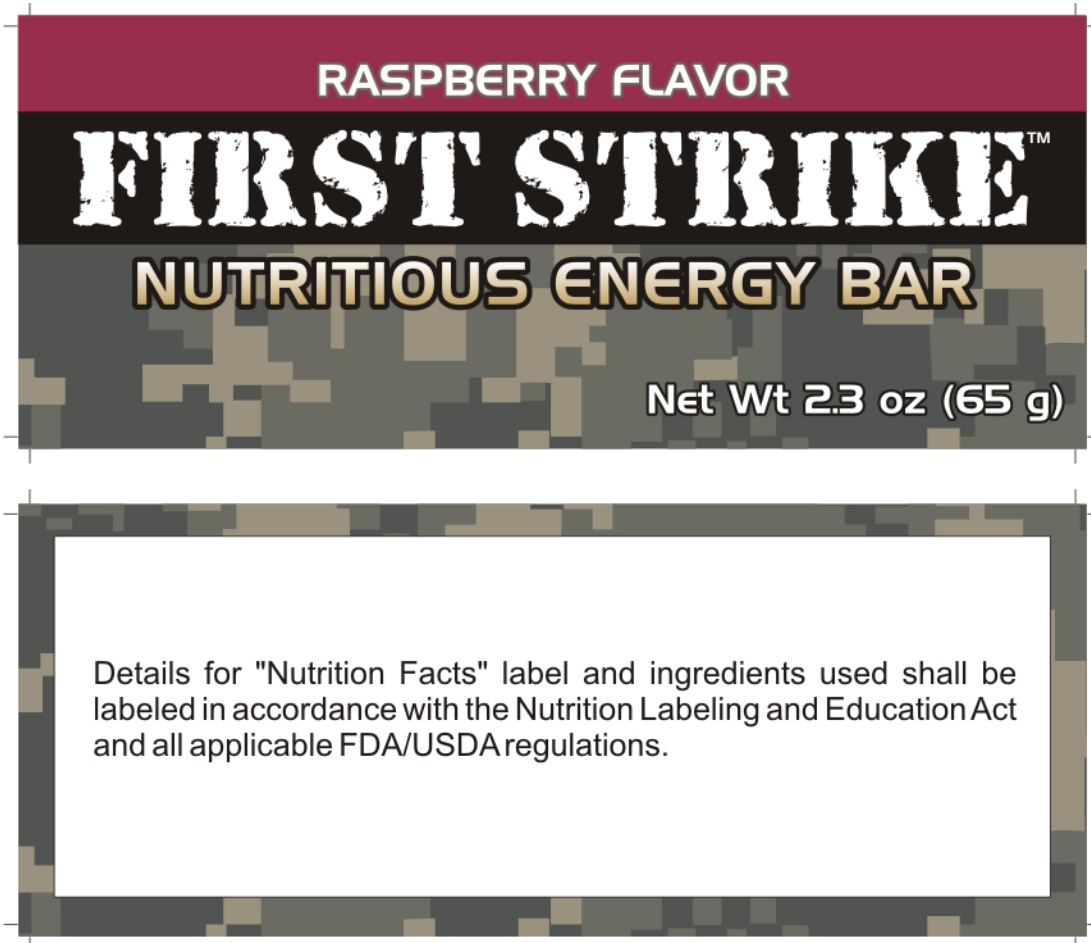


FIGURE 1, FLAVOR IV

FIGURE A-4

PCR-F-001  
APPENDIX A  
15 January 2009  
W/Change 01 7 Jun 17 ES17-044 (DSCP-SS-17-00962)  
SUPERSEDING  
PCR-F-001  
APPENDIX A  
11 May 2007

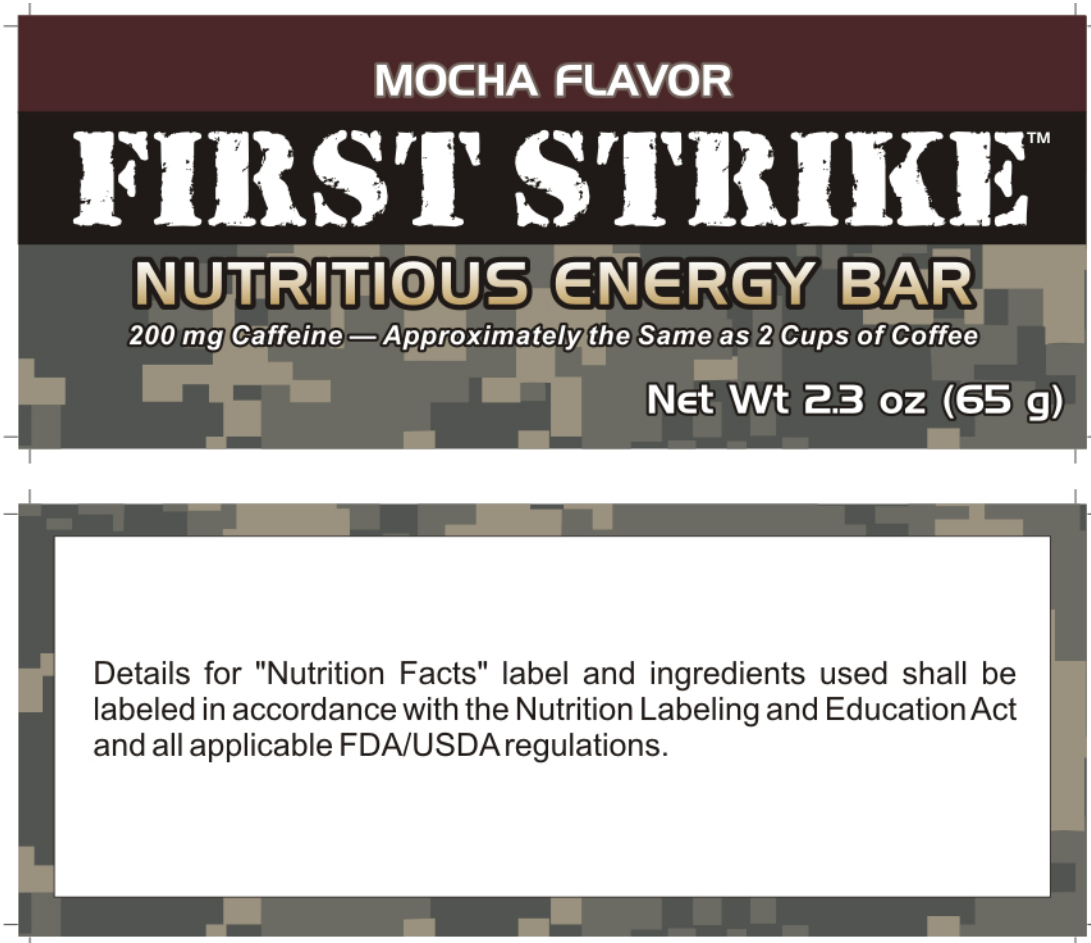


FIGURE 1, FLAVOR V

FIGURE A-5

PCR-F-001  
APPENDIX A  
15 January 2009  
W/Change 01 7 Jun 17 ES17-044 (DSCP-SS-17-00962)  
SUPERSEDING  
PCR-F-001  
APPENDIX A  
11 May 2007

Details for "Nutrition Facts" label and ingredients used shall be labeled in accordance with the Nutrition Labeling and Education Act and all applicable FDA/USDA regulations.

CHOCOLATE FLAVOR

**FIRST STRIKE™**

**NUTRITIOUS ENERGY BAR**

Net Wt 2.3 oz (65 g)

Details for "Nutrition Facts" label and ingredients used shall be labeled in accordance with the Nutrition Labeling and Education Act and all applicable FDA/USDA regulations.

FIGURE 2, FLAVOR I

FIGURE A-6.

PCR-F-001  
APPENDIX A  
15 January 2009  
W/Change 01 7 Jun 17 ES17-044 (DSCP-SS-17-00962)  
SUPERSEDING  
PCR-F-001  
APPENDIX A  
11 May 2007

Details for "Nutrition Facts" label and ingredients used shall be labeled in accordance with the Nutrition Labeling and Education Act and all applicable FDA/USDA regulations.

**APPLE-CINNAMON FLAVOR**

**FIRST STRIKE™**

**NUTRITIOUS ENERGY BAR**

**Net Wt 2.3 oz (65 g)**

Details for "Nutrition Facts" label and ingredients used shall be labeled in accordance with the Nutrition Labeling and Education Act and all applicable FDA/USDA regulations.

FIGURE 2, FLAVOR II

FIGURE A-7.



PCR-F-001  
APPENDIX A  
15 January 2009  
W/Change 01 7 Jun 17 ES17-044 (DSCP-SS-17-00962)  
SUPERSEDING  
PCR-F-001  
APPENDIX A  
11 May 2007

Details for "Nutrition Facts" label and ingredients used shall be labeled in accordance with the Nutrition Labeling and Education Act and all applicable FDA/USDA regulations.

**CRAN-RASPBERRY FLAVOR**

**FIRST STRIKE™**

**NUTRITIOUS ENERGY BAR**

**Net Wt 2.3 oz (65 g)**

Details for "Nutrition Facts" label and ingredients used shall be labeled in accordance with the Nutrition Labeling and Education Act and all applicable FDA/USDA regulations.

FIGURE 2, FLAVOR III

FIGURE A-8.

PCR-F-001  
APPENDIX A  
15 January 2009  
W/Change 01 7 Jun 17 ES17-044 (DSCP-SS-17-00962)  
SUPERSEDING  
PCR-F-001  
APPENDIX A  
11 May 2007

Details for "Nutrition Facts" label and ingredients used shall be labeled in accordance with the Nutrition Labeling and Education Act and all applicable FDA/USDA regulations.

RASPBERRY FLAVOR

**FIRST STRIKE™**

**NUTRITIOUS ENERGY BAR**

Net Wt 2.3 oz (65 g)

Details for "Nutrition Facts" label and ingredients used shall be labeled in accordance with the Nutrition Labeling and Education Act and all applicable FDA/USDA regulations.

FIGURE 2, FLAVOR IV

FIGURE A-9.

PCR-F-001  
APPENDIX A  
15 January 2009  
W/Change 01 7 Jun 17 ES17-044 (DSCP-SS-17-00962)  
SUPERSEDING  
PCR-F-001  
APPENDIX A  
11 May 2007

Details for "Nutrition Facts" label and ingredients used shall be labeled in accordance with the Nutrition Labeling and Education Act and all applicable FDA/USDA regulations.

MOCHA FLAVOR

**FIRST STRIKE™**

**NUTRITIOUS ENERGY BAR**

*200 mg Caffeine — Approximately the Same as 2 Cups of Coffee*

**Net Wt 2.3 oz (65 g)**

Details for "Nutrition Facts" label and ingredients used shall be labeled in accordance with the Nutrition Labeling and Education Act and all applicable FDA/USDA regulations.

FIGURE 2, FLAVOR V

FIGURE A-10.

PCR-F-001  
APPENDIX A  
15 January 2009  
W/Change 01 7 Jun 17 ES17-044 (DSCP-SS-17-00962)  
SUPERSEDING  
PCR-F-001  
APPENDIX A  
11 May 2007

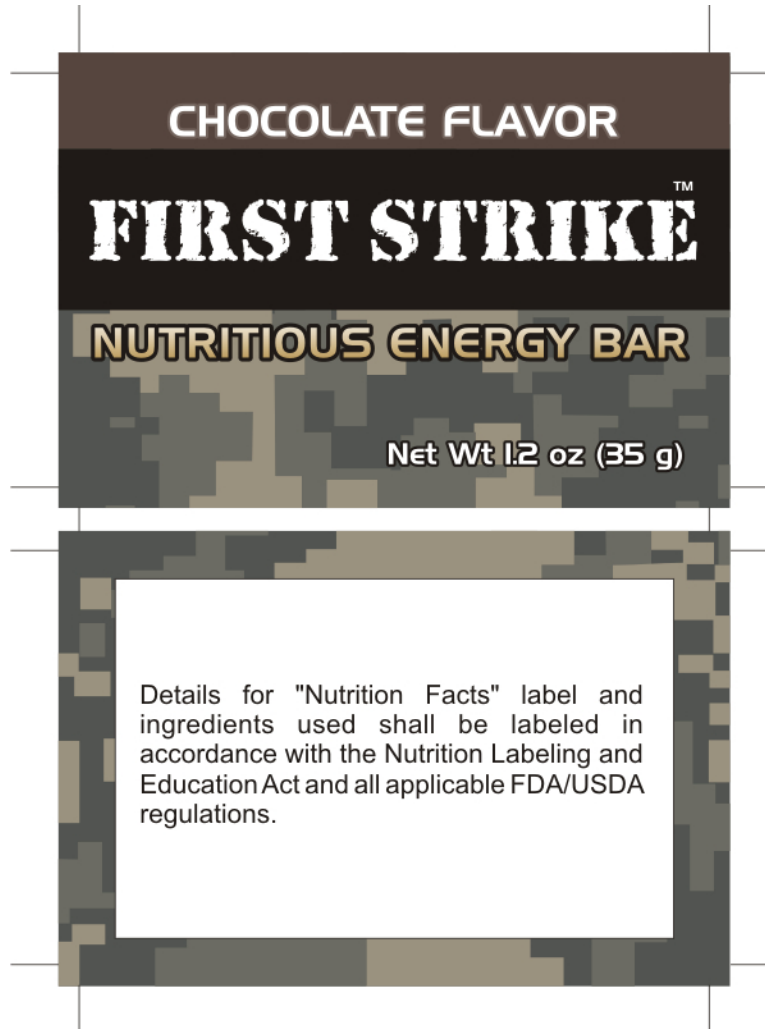


FIGURE 3, FLAVOR I

FIGURE A-11.

PCR-F-001  
APPENDIX A  
15 January 2009  
W/Change 01 7 Jun 17 ES17-044 (DSCP-SS-17-00962)  
SUPERSEDING  
PCR-F-001  
APPENDIX A  
11 May 2007

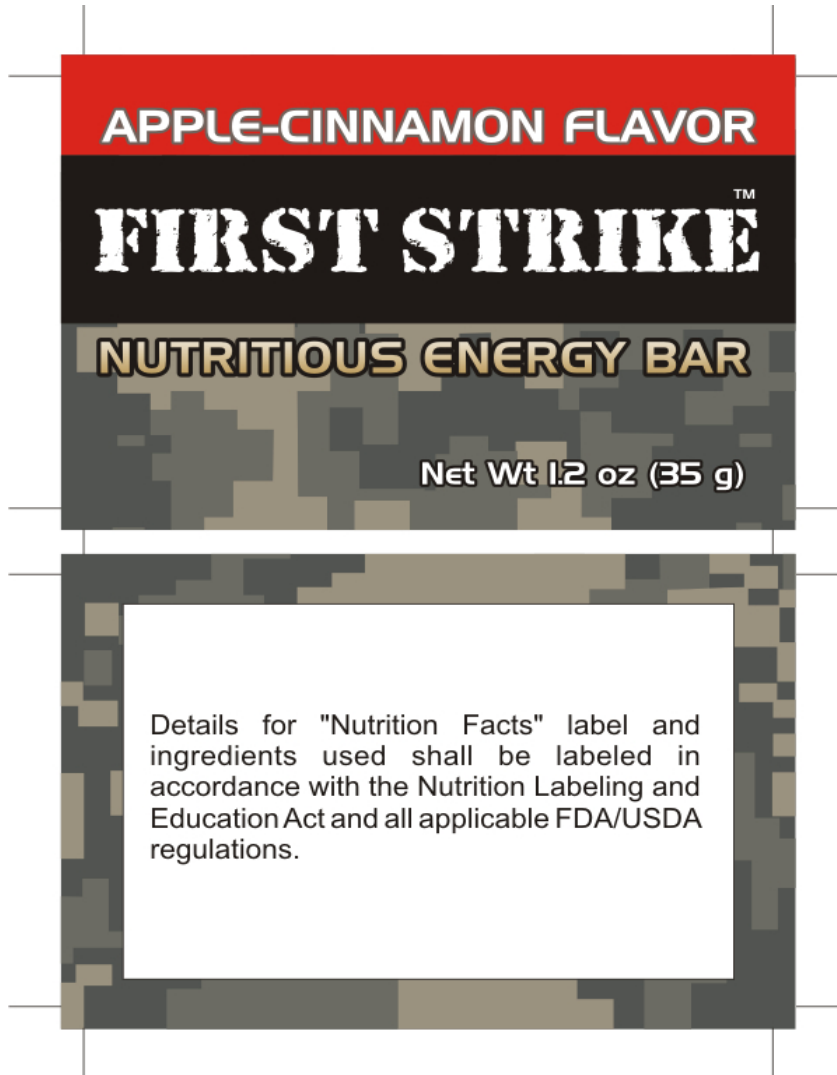


FIGURE 3, FLAVOR II

FIGURE A-12.

PCR-F-001  
APPENDIX A  
15 January 2009  
W/Change 01 7 Jun 17 ES17-044 (DSCP-SS-17-00962)  
SUPERSEDING  
PCR-F-001  
APPENDIX A  
11 May 2007

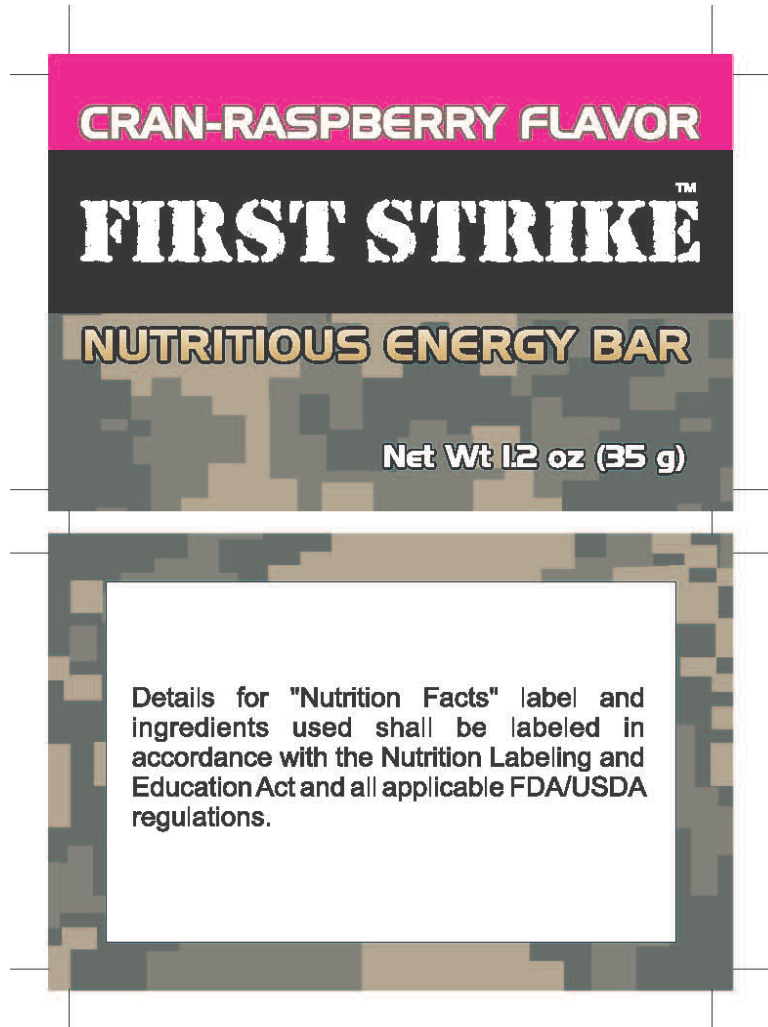


FIGURE 3, FLAVOR III

FIGURE A-13.

PCR-F-001  
APPENDIX A  
15 January 2009  
W/Change 01 7 Jun 17 ES17-044 (DSCP-SS-17-00962)  
SUPERSEDING  
PCR-F-001  
APPENDIX A  
11 May 2007

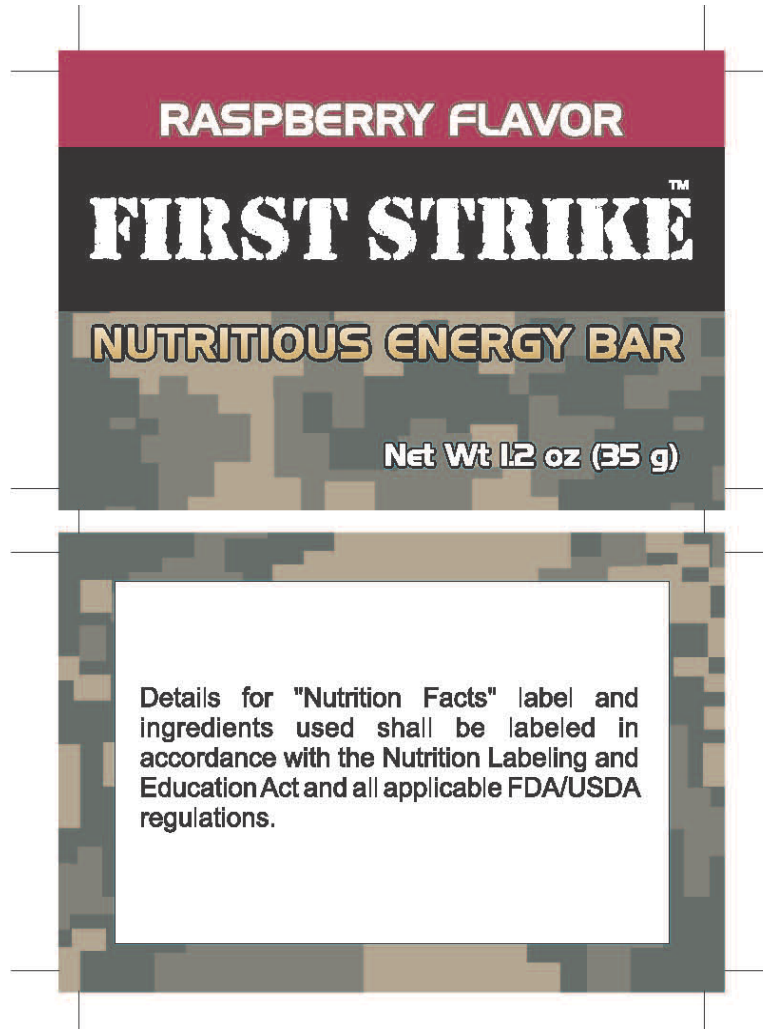


FIGURE 3, FLAVOR IV

FIGURE A-14.

PCR-F-001  
APPENDIX A  
15 January 2009  
W/Change 01 7 Jun 17 ES17-044 (DSCP-SS-17-00962)  
SUPERSEDING  
PCR-F-001  
APPENDIX A  
11 May 2007

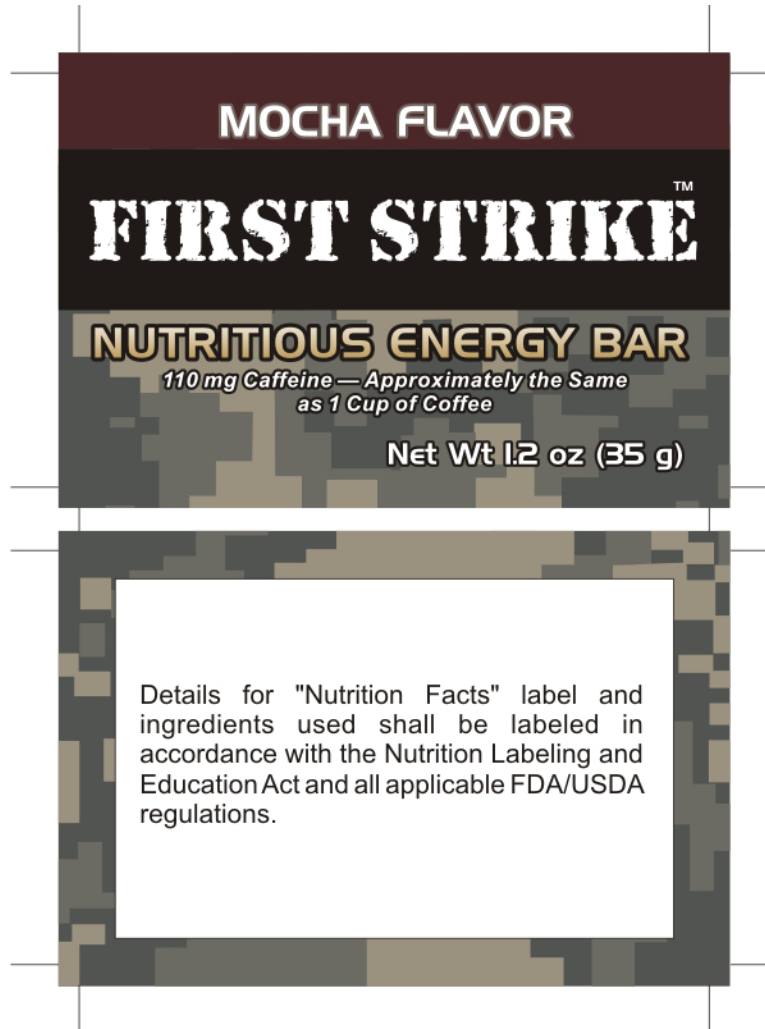


FIGURE 3, FLAVOR V

FIGURE A-15.



PCR-F-001  
APPENDIX A  
15 January 2009  
W/Change 01 7 Jun 17 ES17-044 (DSCP-SS-17-00962)  
SUPERSEDING  
PCR-F-001  
APPENDIX A  
11 May 2007

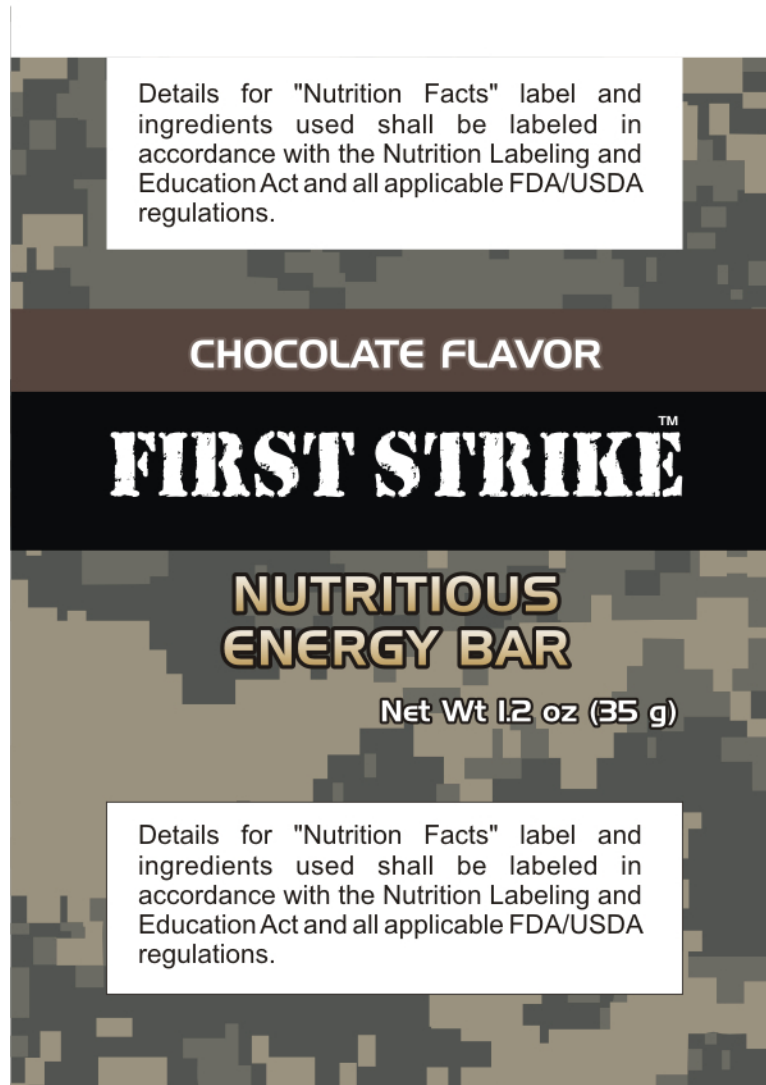


FIGURE 4, FLAVOR I

FIGURE A-16.

PCR-F-001  
APPENDIX A  
15 January 2009  
W/Change 01 7 Jun 17 ES17-044 (DSCP-SS-17-00962)  
SUPERSEDING  
PCR-F-001  
APPENDIX A  
11 May 2007

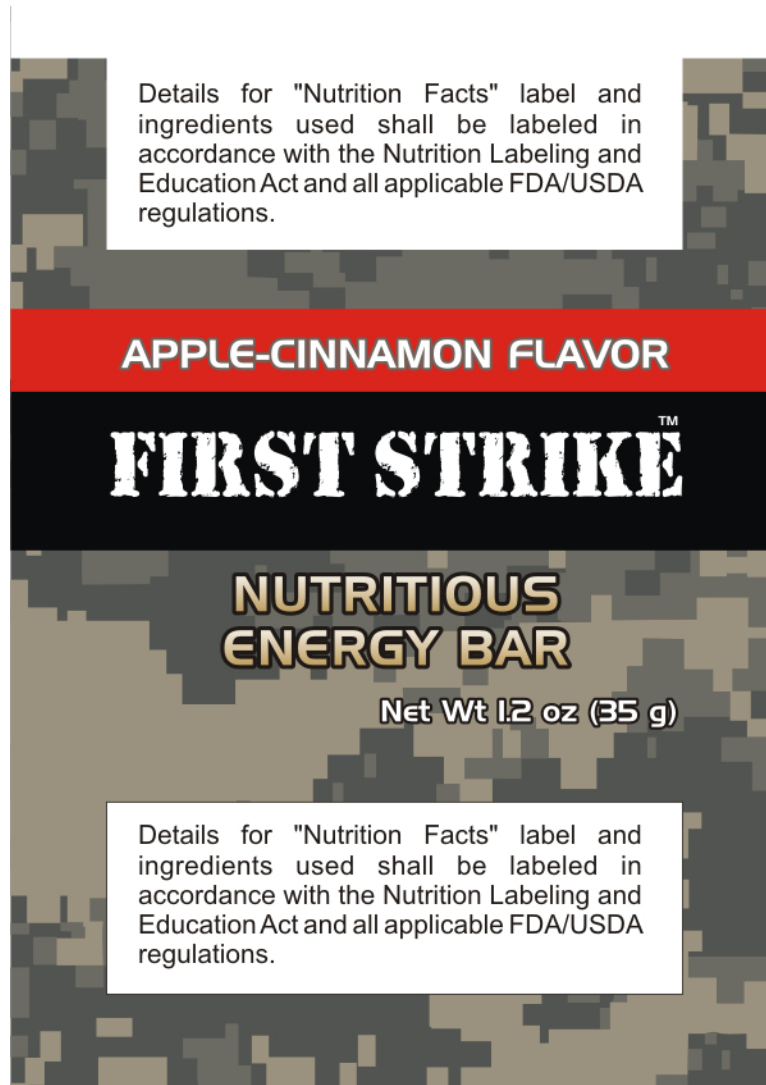


FIGURE 4, FLAVOR II

FIGURE A-17.

PCR-F-001  
APPENDIX A  
15 January 2009  
W/Change 01 7 Jun 17 ES17-044 (DSCP-SS-17-00962)  
SUPERSEDING  
PCR-F-001  
APPENDIX A  
11 May 2007



FIGURE 4, FLAVOR III

FIGURE A-18.

PCR-F-001  
APPENDIX A  
15 January 2009  
W/Change 01 7 Jun 17 ES17-044 (DSCP-SS-17-00962)  
SUPERSEDING  
PCR-F-001  
APPENDIX A  
11 May 2007

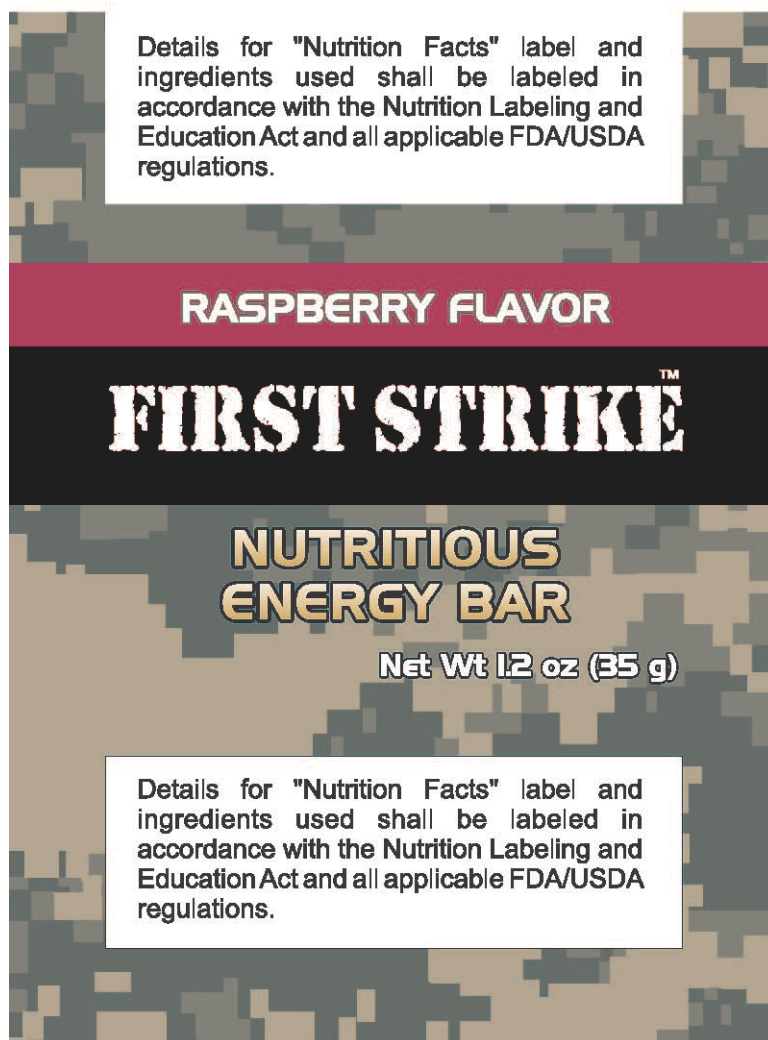


FIGURE 4, FLAVOR IV

FIGURE A-19.

PCR-F-001  
APPENDIX A  
15 January 2009  
W/Change 01 7 Jun 17 ES17-044 (DSCP-SS-17-00962)  
SUPERSEDING  
PCR-F-001  
APPENDIX A  
11 May 2007

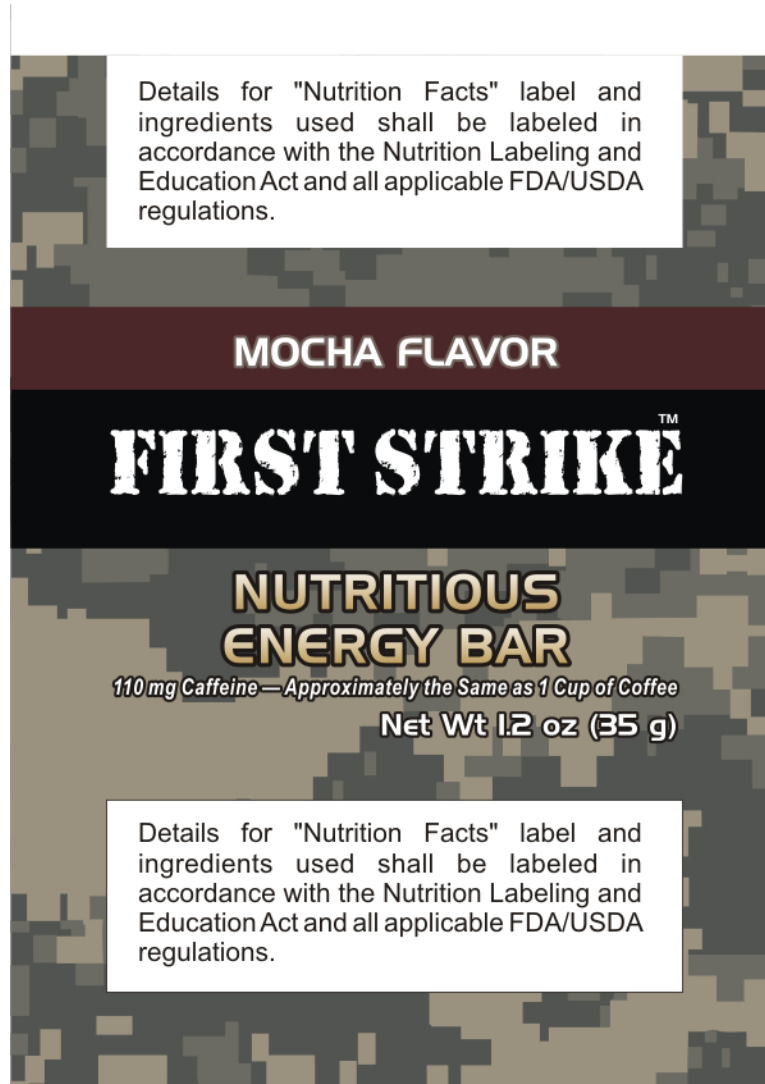


FIGURE 4, FLAVOR V

FIGURE A-20.

PCR-F-001  
APPENDIX A  
15 January 2009  
W/Change 01 7 Jun 17 ES17-044 (DSCP-SS-17-00962)  
SUPERSEDING  
PCR-F-001  
APPENDIX A  
11 May 2007



**FIGURE 5, FLAVOR V**

**FIGURE A-21.**