

PCR-F-001A FIRST STRIKE BAR LABELS

A.1 SCOPE

A.1.1 Scope. This appendix provides additional guidance to help the specification developer define section D-2 requirements. This appendix is a mandatory part of this specification. The information contained herein is intended for compliance.

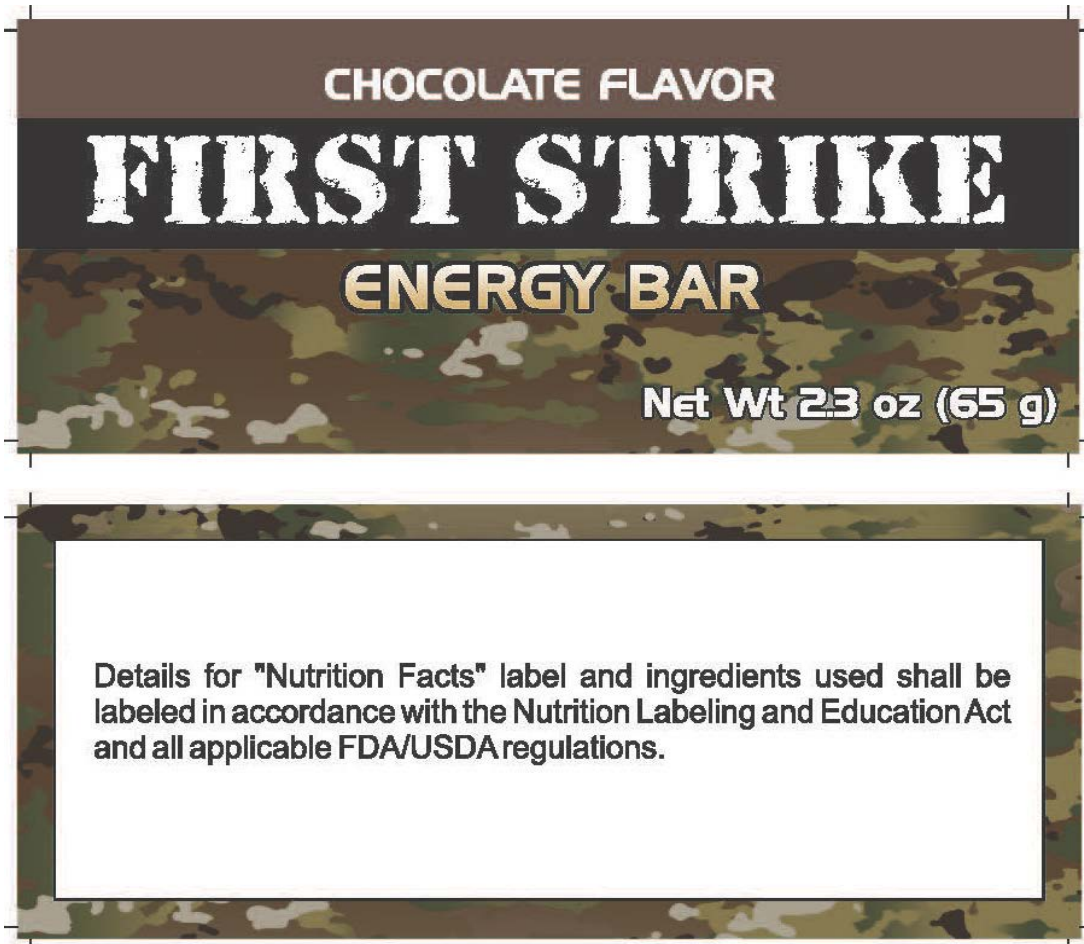


FIGURE 1, FLAVOR I

FIGURE A-1

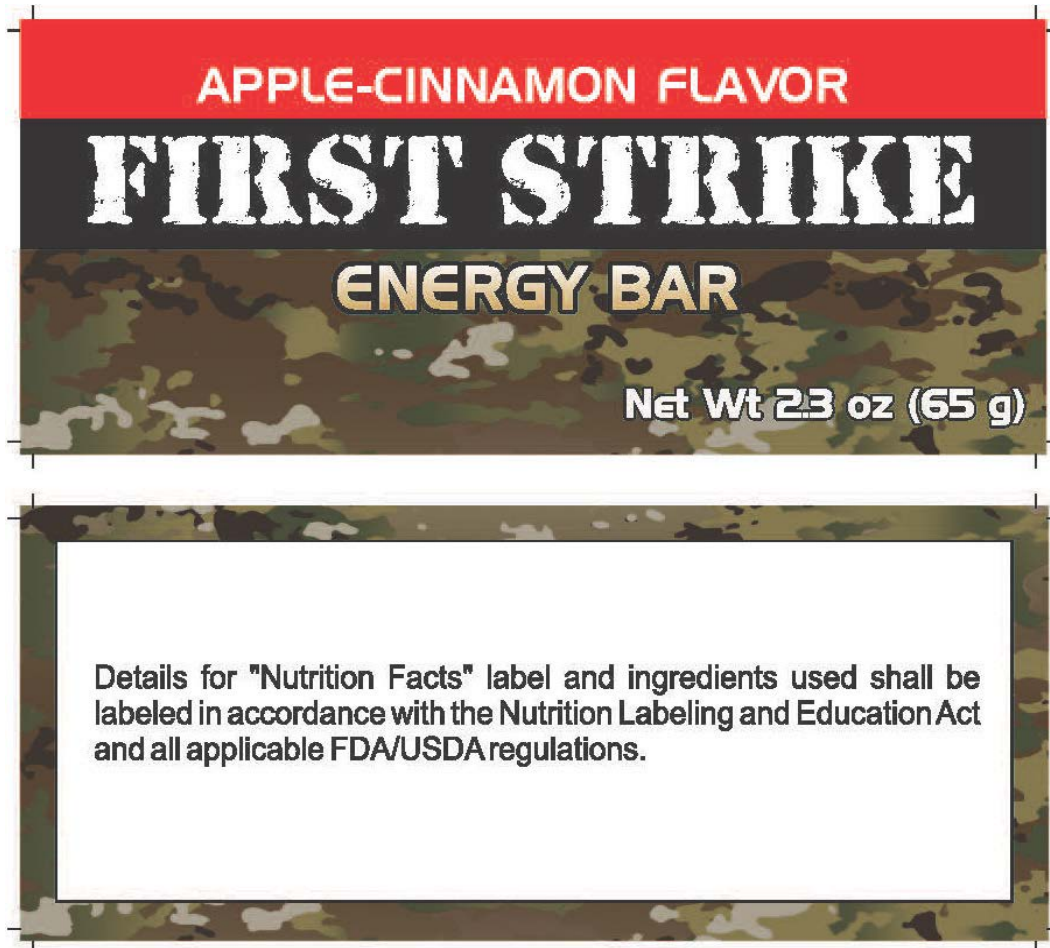


FIGURE 1, FLAVOR II

FIGURE A-2

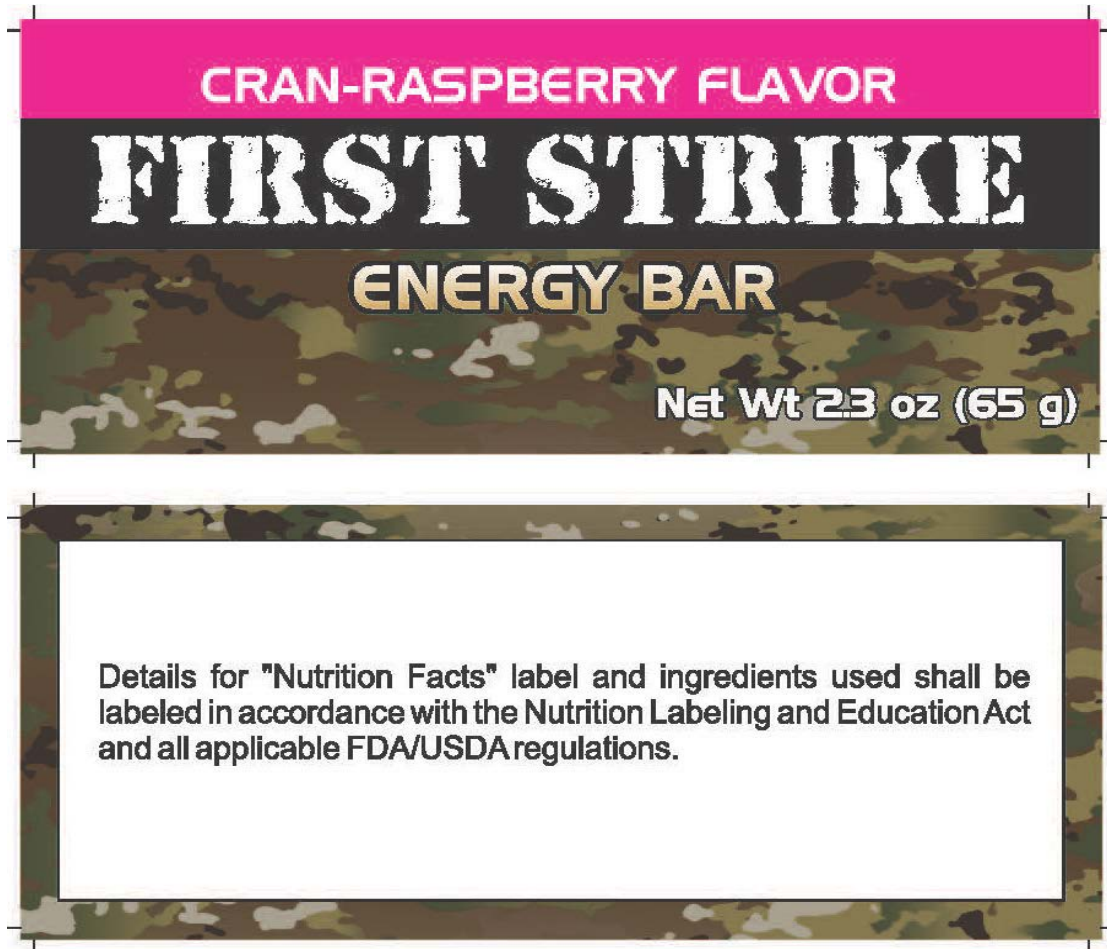


FIGURE 1, FLAVOR III

FIGURE A-3

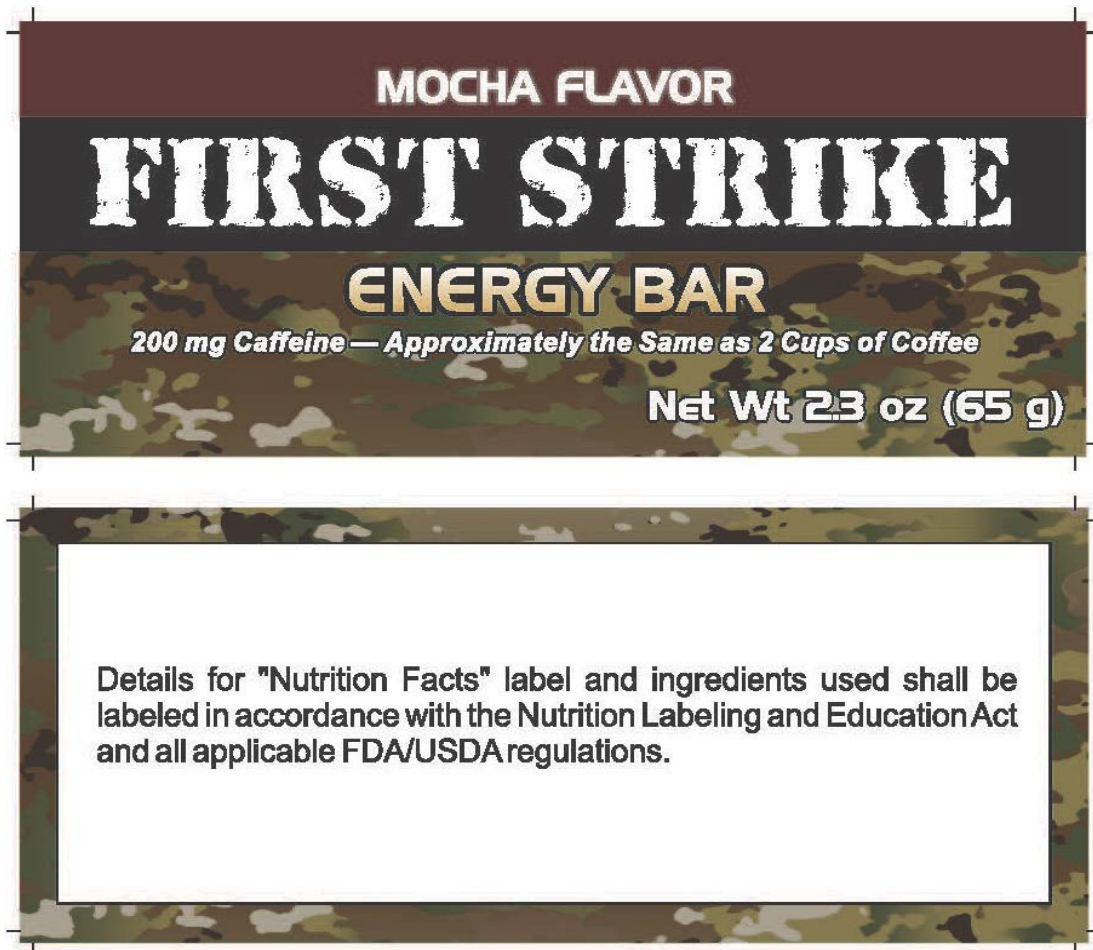


FIGURE 1, FLAVOR V

FIGURE A-4

Details for "Nutrition Facts" label and ingredients used shall be labeled in accordance with the Nutrition Labeling and Education Act and all applicable FDA/USDA regulations.

CHOCOLATE FLAVOR

**FIRST STRIKE**

**ENERGY BAR**

Net Wt 2.3oz (65 g)

Details for "Nutrition Facts" label and ingredients used shall be labeled in accordance with the Nutrition Labeling and Education Act and all applicable FDA/USDA regulations.

FIGURE 2, FLAVOR I

FIGURE A-5





FIGURE 2, FLAVOR II

FIGURE A-6

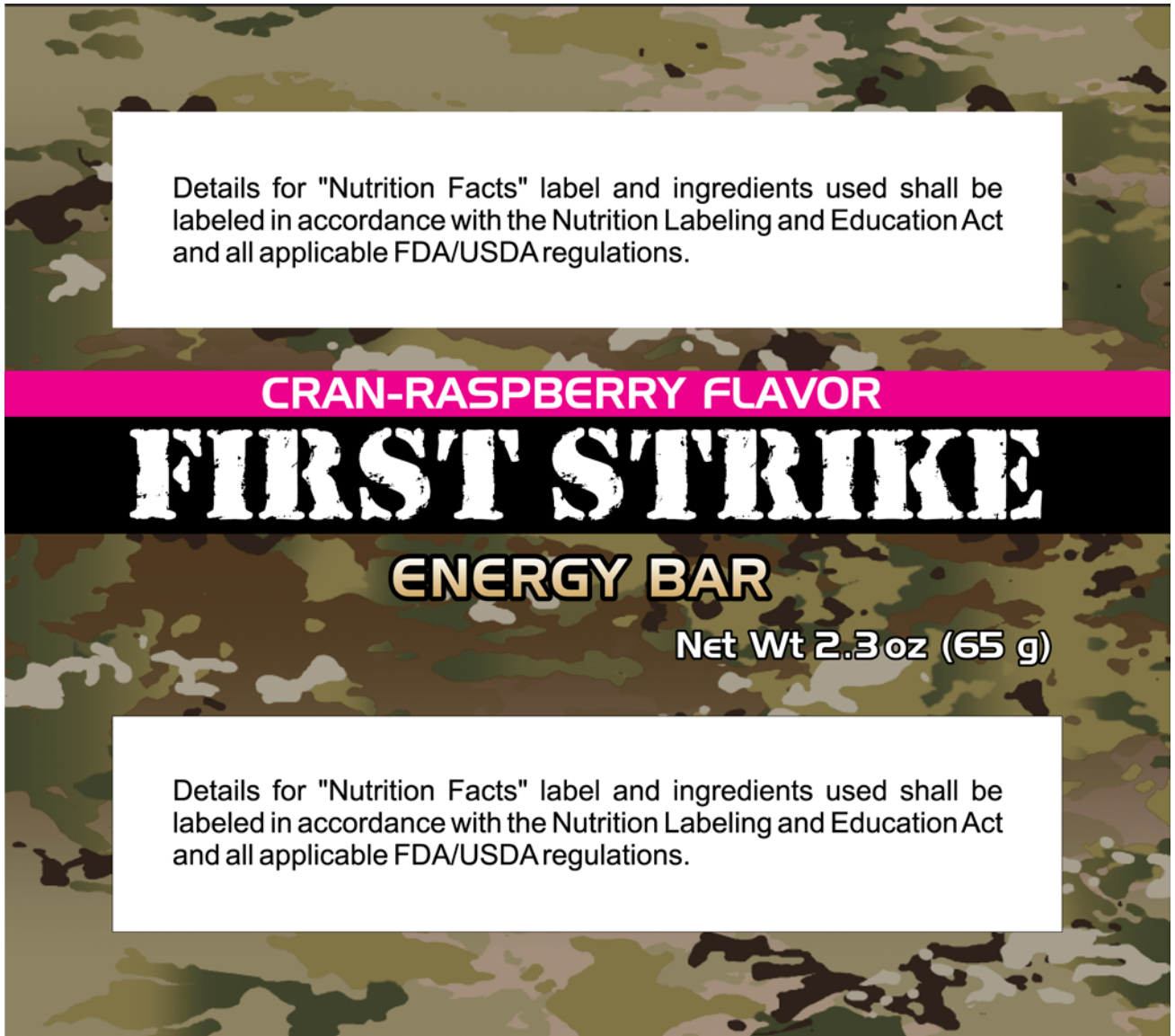


FIGURE 2, FLAVOR III

FIGURE A-7



Details for "Nutrition Facts" label and ingredients used shall be labeled in accordance with the Nutrition Labeling and Education Act and all applicable FDA/USDA regulations.

MOCHA FLAVOR

**FIRST STRIKE**

**ENERGY BAR**

*200 mg Caffeine — Approximately the Same as 2 Cups of Coffee*

**Net Wt 2.3oz (65 g)**

Details for "Nutrition Facts" label and ingredients used shall be labeled in accordance with the Nutrition Labeling and Education Act and all applicable FDA/USDA regulations.

FIGURE 2, FLAVOR V

FIGURE A-8

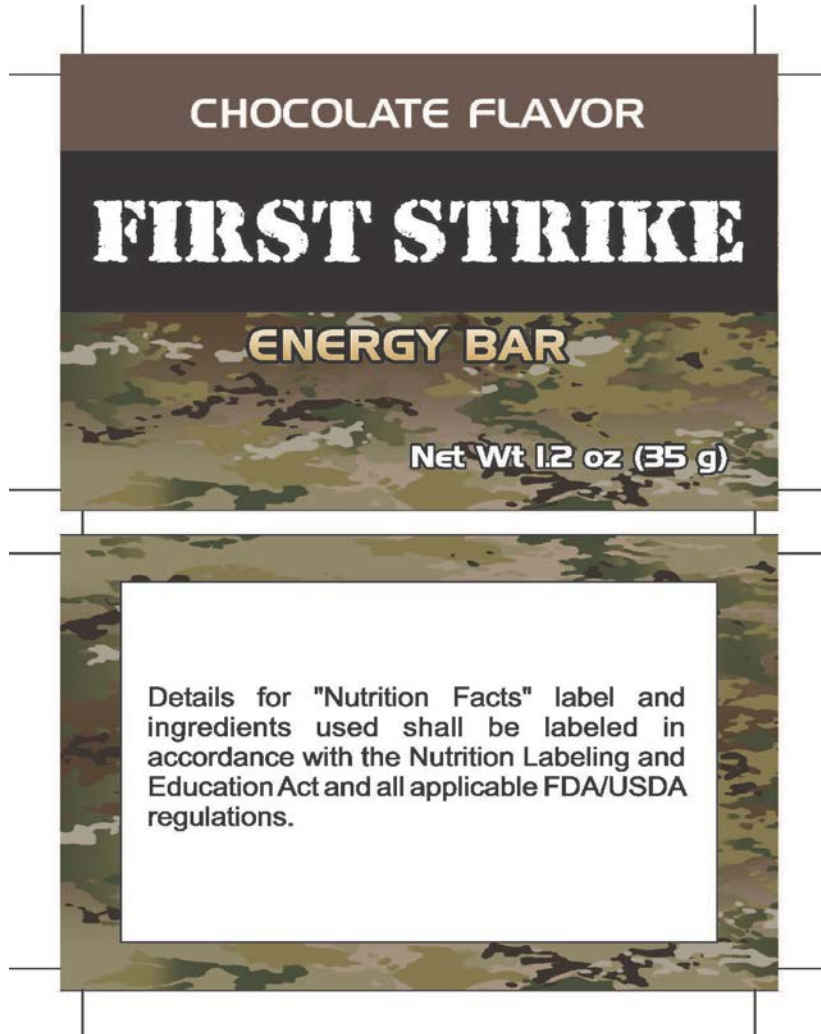


FIGURE 3, FLAVOR I

FIGURE A-9

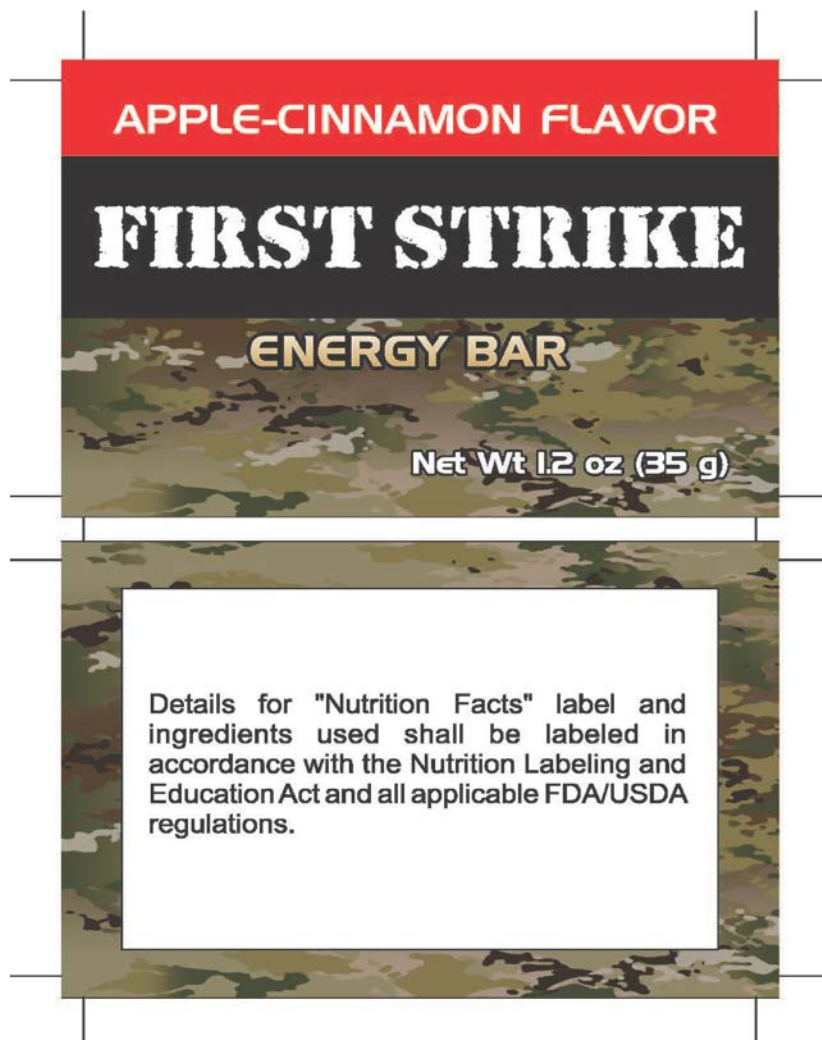


FIGURE 3, FLAVOR II

FIGURE A-10

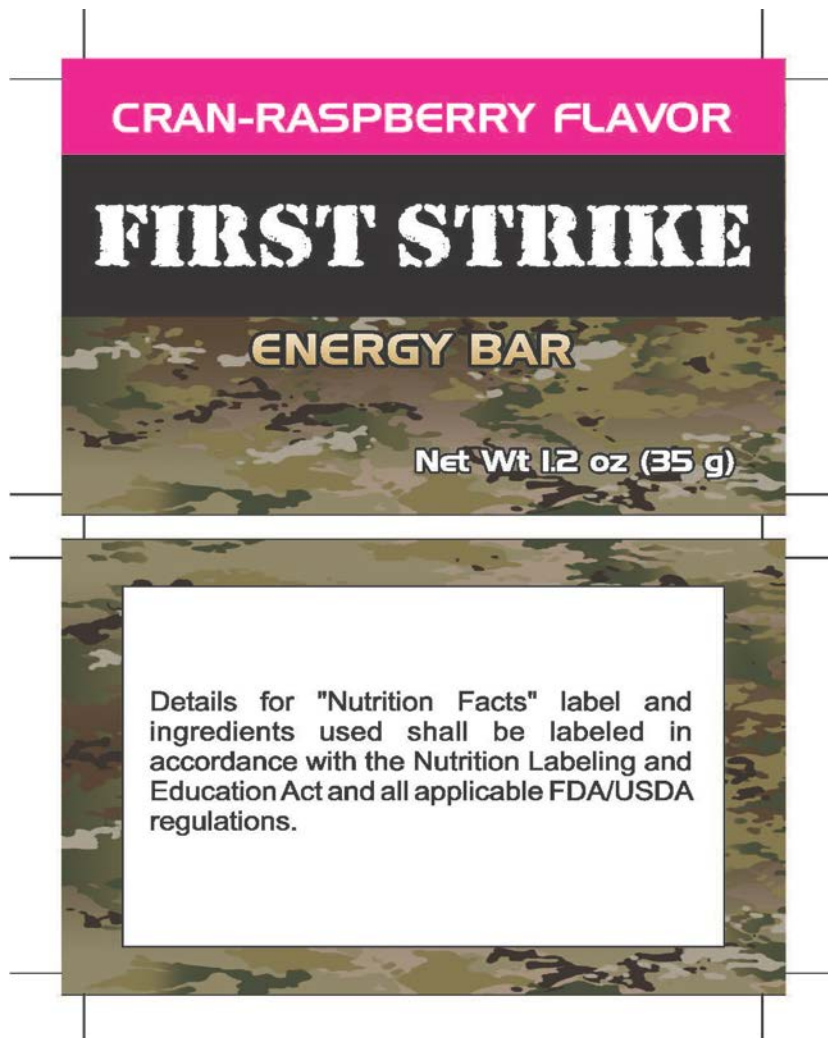


FIGURE 3, FLAVOR III

FIGURE A-11

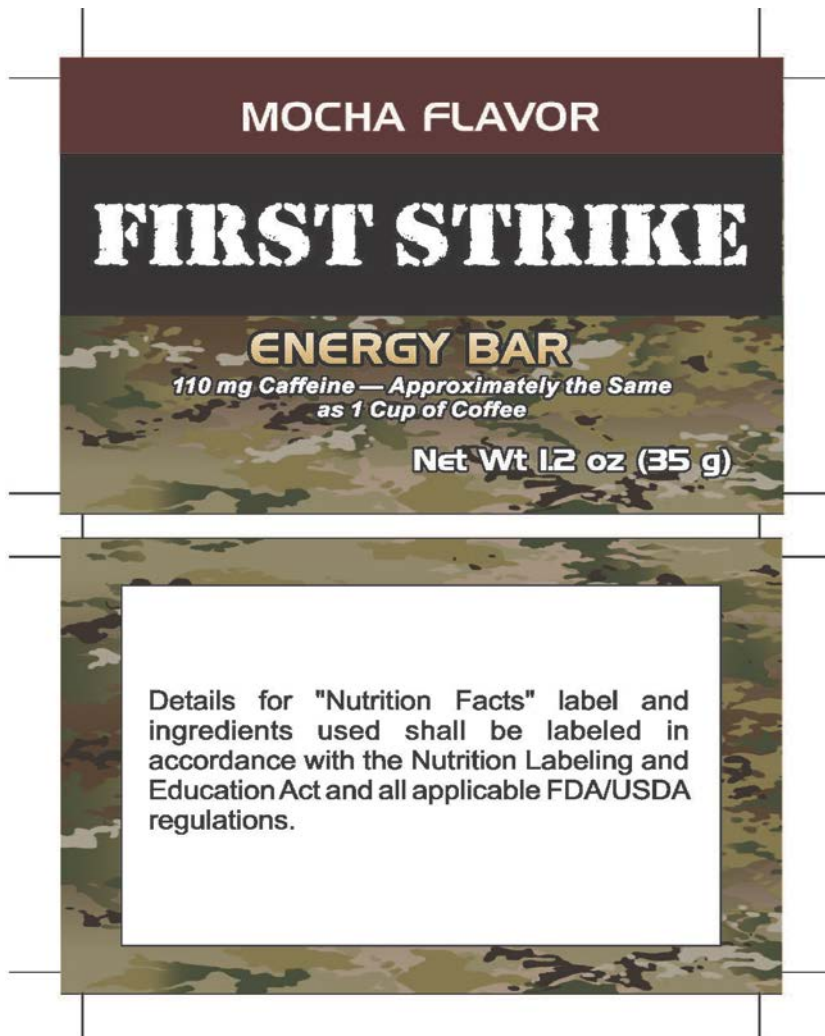


FIGURE 3, FLAVOR V

FIGURE A-12

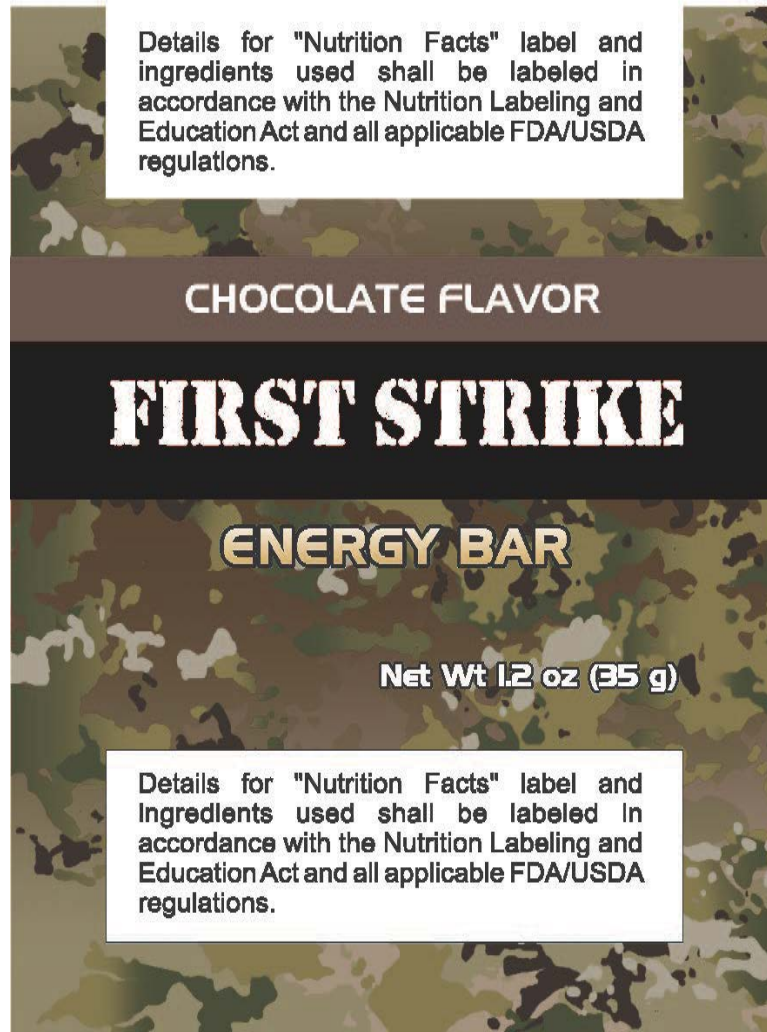


FIGURE 4, FLAVOR I

FIGURE A-13





FIGURE 4, FLAVOR II

FIGURE A-14



FIGURE 4, FLAVOR III

FIGURE A-15

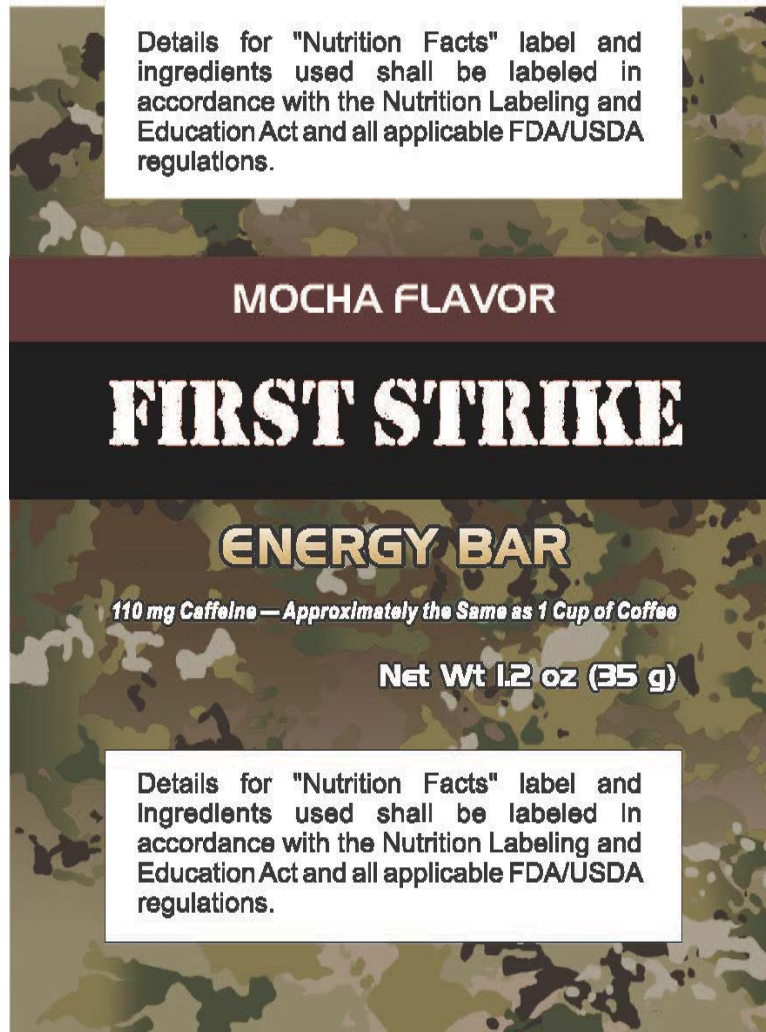


FIGURE 4, FLAVOR V

FIGURE A-16



FIGURE 5, FLAVOR V

FIGURE A-17